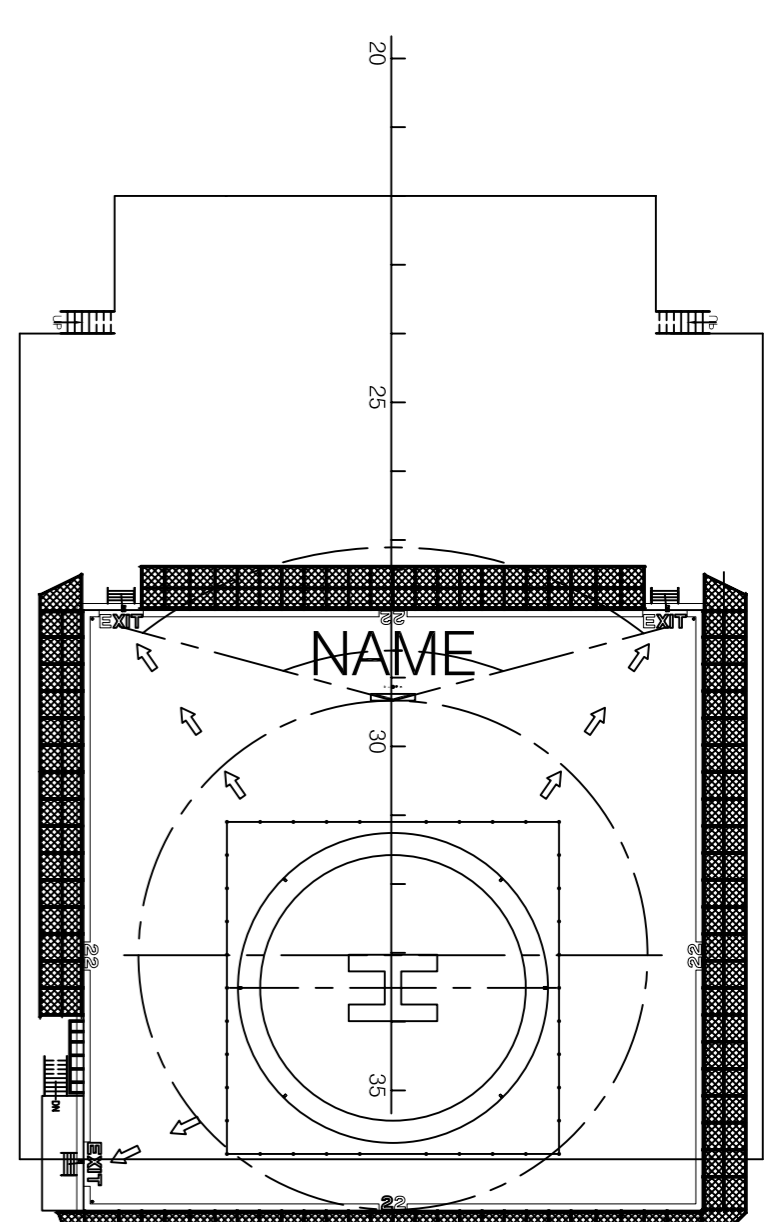
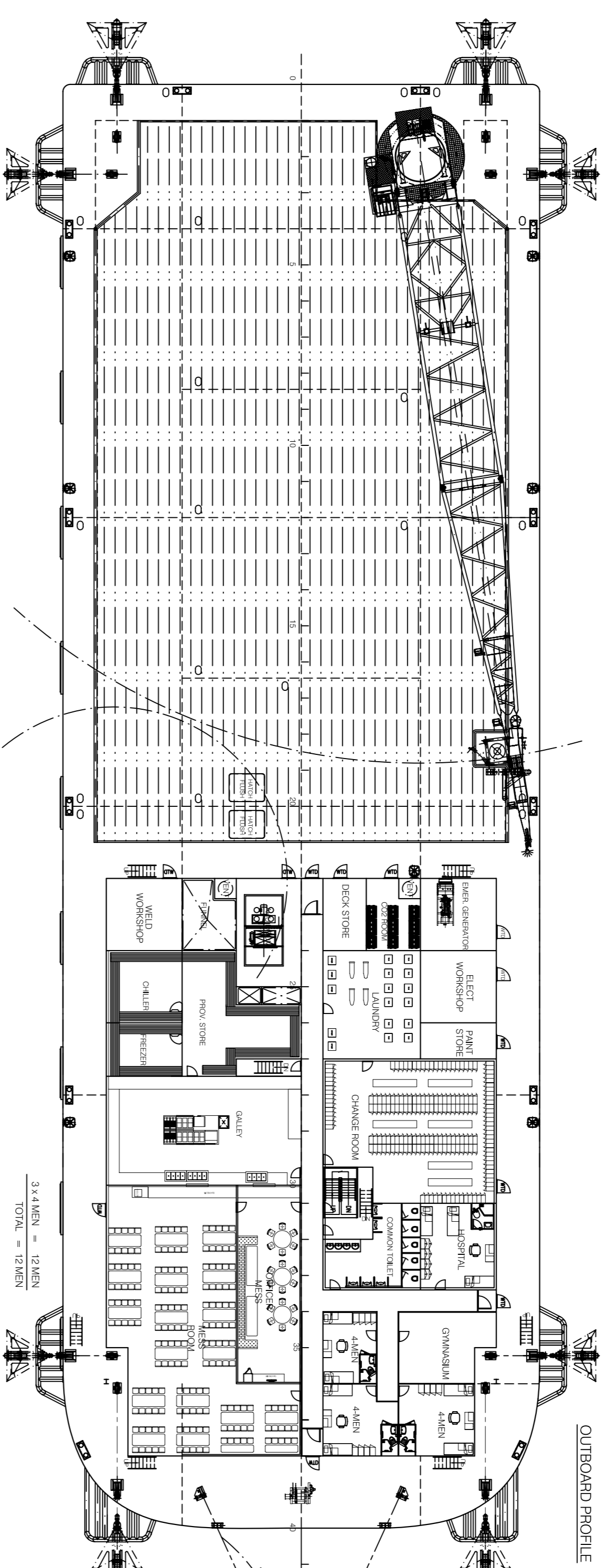
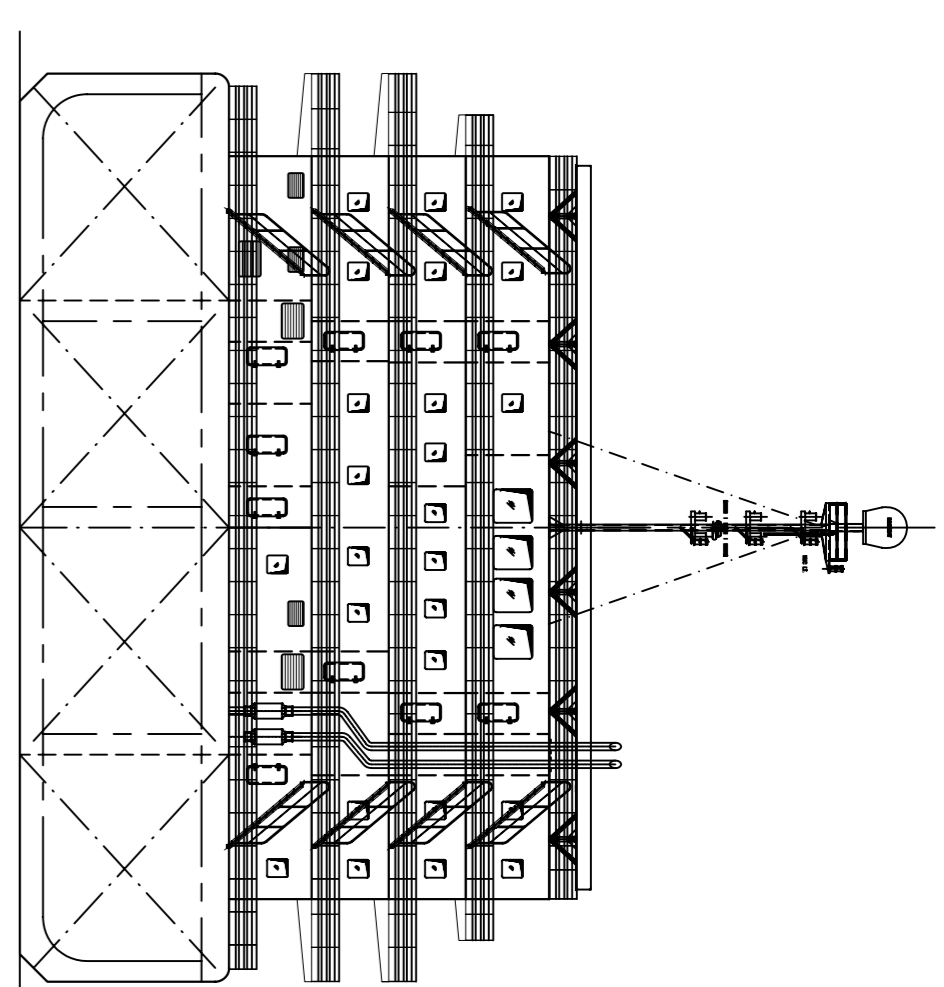


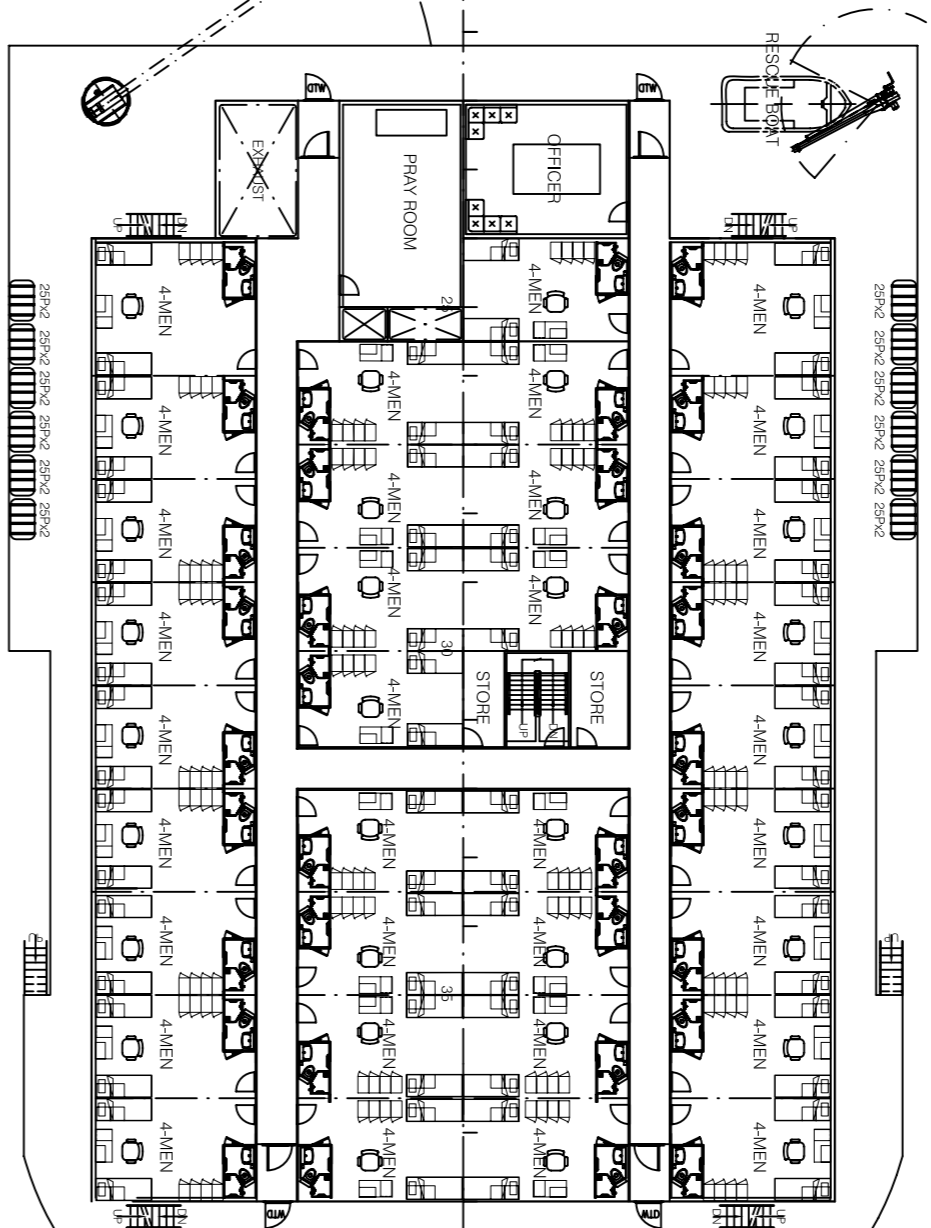
OUTBOARD PROFILE



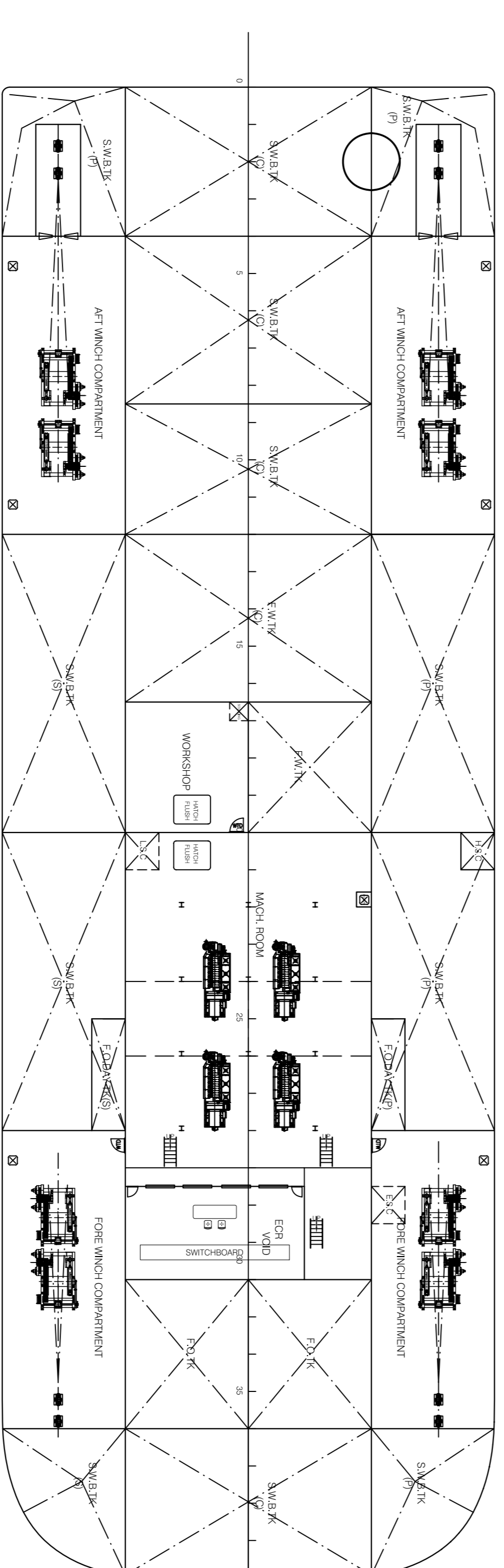
HELIDECK



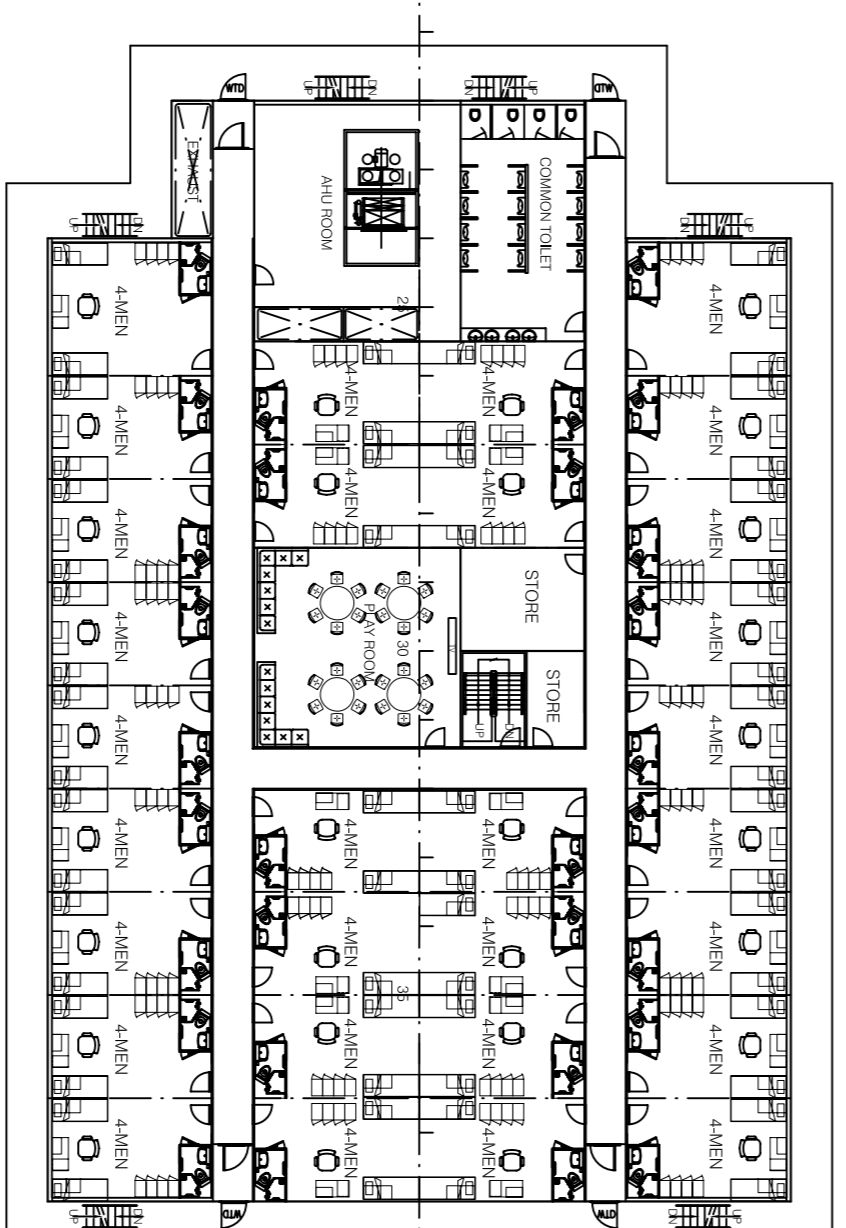
MAIN DECK PLAN



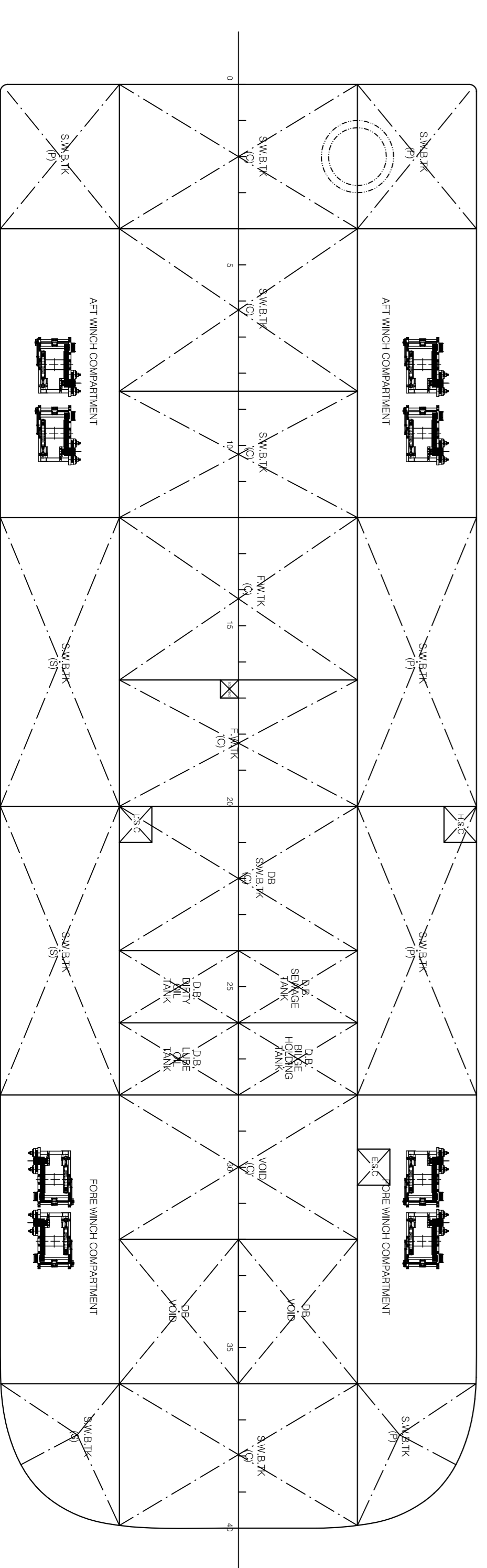
ACCOMMODATION DECK 1  
34 x 4 MEN = 138 MEN  
TOTAL = 138 MEN



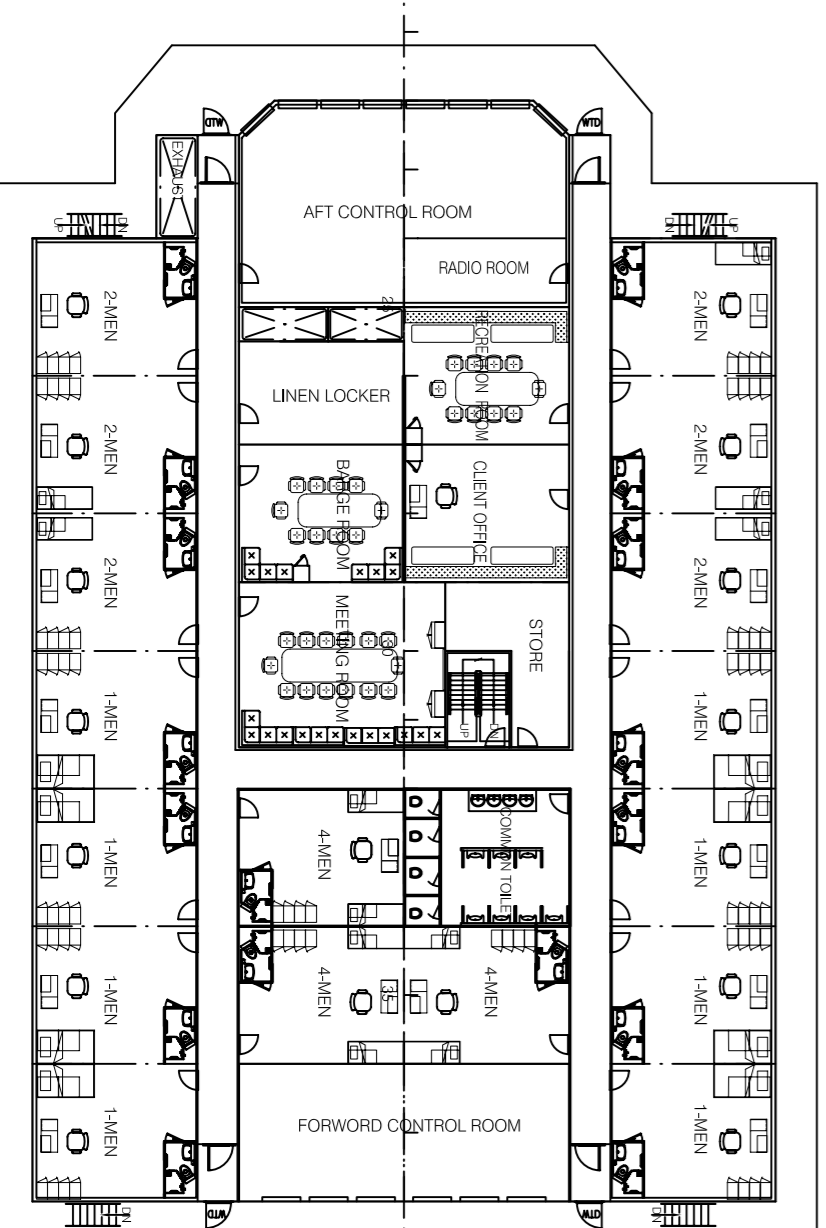
TANK TOP PLAN



ACCOMMODATION DECK 2  
30 x 4 MEN = 120 MEN  
TOTAL = 120 MEN



BOTTOM PLAN



ACCOMMODATION DECK 3  
3 x 4 MEN = 12 MEN  
6 x 2 MEN = 12 MEN  
8 x 1 MEN = 8 MEN  
TOTAL = 32 MEN

ISSUED FOR APPROVAL  
DATE: 2012-11-22

PRINCIPAL DIMENSIONS

LENGTH O.A. ----- 100.00 M  
 BREADTH MLD ----- 33.00 M  
 DEPTH MLD ----- 7.60 M

COMPLEMENT:

ACCOMMODATION DECK 3 ----- 32 MEN  
 ACCOMMODATION DECK 2 ----- 120 MEN  
 ACCOMMODATION DECK 1 ----- 136 MEN  
 MAIN DECK ----- 12 MEN  
 TOTAL: 300 MEN

DESIGNER:	NINE SUN GROUP CORP., LTD. NSC MARINE CORP.		
BUILDER:	300 MEN ACCOMMODATION WORK BARGE		
REV. NO.	ISSUED FOR APPROVAL	W21	2012.11.22
OWNER:	REVISION DESCRIPTION	BY	DATE
DRAWING NO.	PROJECT	HULL NO.	CLASS
W21	300 MEN ACCOMMODATION WORK BARGE	2012.11.22	BY
CHECKED	TITLE	SHEET	1/1
VERIFIED	General Arrangement Plan	SHEET	1/1
APPROVED		SCALE	NTS

THE DRAWING IS THE PROPERTY OF NINE SUN GROUP CORP., LTD. NSC MARINE CORP. IT IS NOT TO BE COPIED OR DISCLOSED TO ANY PARTY WITHOUT PRIOR WRITTEN CONSENT.