

Particulars correct at time of printing but not guaranteed.

WORK-OVER RIG

Drill pipe rack sizing:	7,500m (24,800ft) 2800m (9,300ft) of 4½" DP and 4700-m(15,500-ft) of 3½" DP.
Drill collar rack sizing:	78-m (260-ft) of 6" Drill Collars.
Derrick:	317-tonne (350-ton, 700-kips), 38.4m (127 ft) double racking.
Hook:	227 -ton (250-ton 500-kips)
Rotary Load:	227-tonne (250-ton, 500 kips)
Set-back:	227-tonne (250-ton, 500 kips)
Combined Structure:	227-tonne (250-ton, 500 kips)
Cantilevered Skid:	Cantilever XY skid: 16.7m by 9m (55ft by 30ft)
Tender Assist Skid:	Capping beam XY skid: 9m to 15m (30ft to 50ft) adjustable for common Capping beam widths
Draw-works:	LeTourneau® 249-tonne (275-ton, 550-kips) Model LDW550K, 10-lines 1,119 KW (1,500 hp) motor and Electric brake
Top Drive:	LeTourneau® 227-ton (250-ton, 500-kips) Model L-DDTD
False Rotary Drive:	952.5-mm (37½-in) pass through rated at 227-tonne (250 tons)
Traveling Equipment:	227-tonne (250-ton 500 kips) Hook/block
Rig Instrumentation:	Petron® Electronic Touch screen Display with 25 parameters/alarms on floor and within offices.
Fluids Measurement:	Pit volume Total (PVT), Fluid Return Flow Increase (Flo-sho) and pump Strokes.
TDS Speed:	TDS speed indicator 0-240 rpm.
Weight Indicator:	Petron® weight indicator
Tong:	139.7-mm (5½") HSVS Eckel® Hydra-shift® casing tong 60.3mm to 219mm, t (2-3/8", to 8-5/8")
Camera:	Top-Drive Monitoring Camera
Pollution Control:	Floor, draw-works, bell nipple Equipped with drip pan Drain piped To two waste tanks.
Air Hoists:	(I) Ingersoll Rand® Model FA150KGi man-riding air winch rated at 150kg (330lbs), (4) Ingersoll Rand® Model BU7A winches rated at 454 kg (1000lbs).
Tubing Equipment:	60.3-mm to 172-mm (2-3/8" to 5") tubing or drill pipe.

WELL CONTROL EQUIPMENT BOP

Cameron Iron works® (CIW) 346mm (13-5/8") 5M Annular Bop
CIW 346mm, 690-bar (13-5/8" IOM) BOPs with pipe, blind and shear rams.

Shear rams outfitted with booster.

Telescoping bell nipple capable of mating to annular.

Three-way 346mm (13-5/8") flow cross with five (5) 77.8m-690-bar (3-1/16", 10M) manual and (I) 77.8m, 690-bar (3-1/16", 10M) hydraulic valves.

(2) 20-tonne (22-ton, 44-kips) air driven BOP hoists, BOP transport dolly with IOM test stump.

Portable 1,034-bar (15M) BOP pressure test unit with charts

Hydraulic bolt torque tools for BOP

1363-liters (360-gallons) CAD accumulator unit (1363-liters or 360-gallons from 24-bottles), (3) air pumps and one electric triplex pump.

(2) Remote units 77.8mm, 690-bar (3-1/16" Diameter, 10M) choke manifold with surge tank.

Targeted turns, pressure gauge, divert to gas buster. Remote adjustable choke and two manual adjustable chokes.

CIRCULATING SYSTEM

Circulating Pumps: Triplex pump 127mm x 356mm (5"x14")
Lewco® Model WH-2214, 1641.2KW (2,200hp) AC motor Rated for 517-bar (7,500 PSI), Pulsation dampener with two (2) (1,150hp) AC motors.

860KW

Kill Pumps: Triplex pump 95.3mm x 230.2mm (3-3/4"x8")
(2200HP)
pulsation motor.

Well-bore Fluids Active Pit:

79-m3 (675-bbls) active circulating system with agitators and pumps Re-circulating, 5.8-m3 (50-bbl) trip tank with gauge Slug/pill tank,

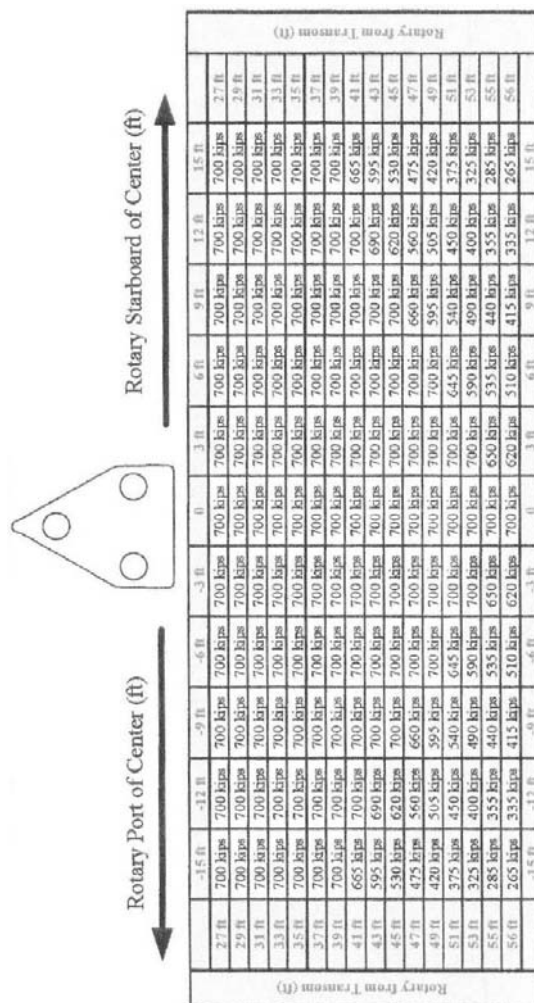
Mixing hopper- high jet type Mud/gas separator (poor-boy gas buster) with returns to tank.

(1) Model FLC-503 Derrick® "Linear Flow Line cleaner (600 gpm) on Trip

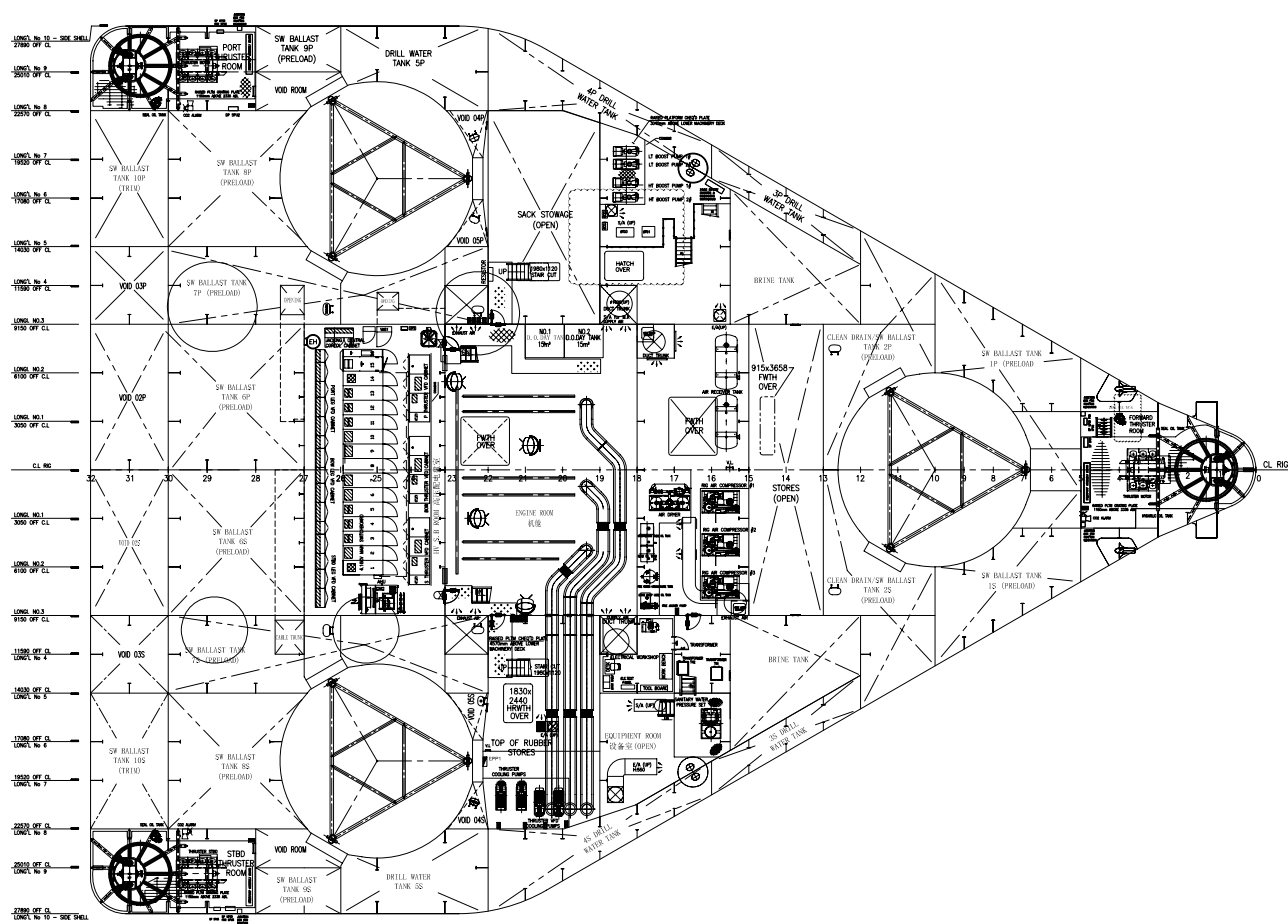
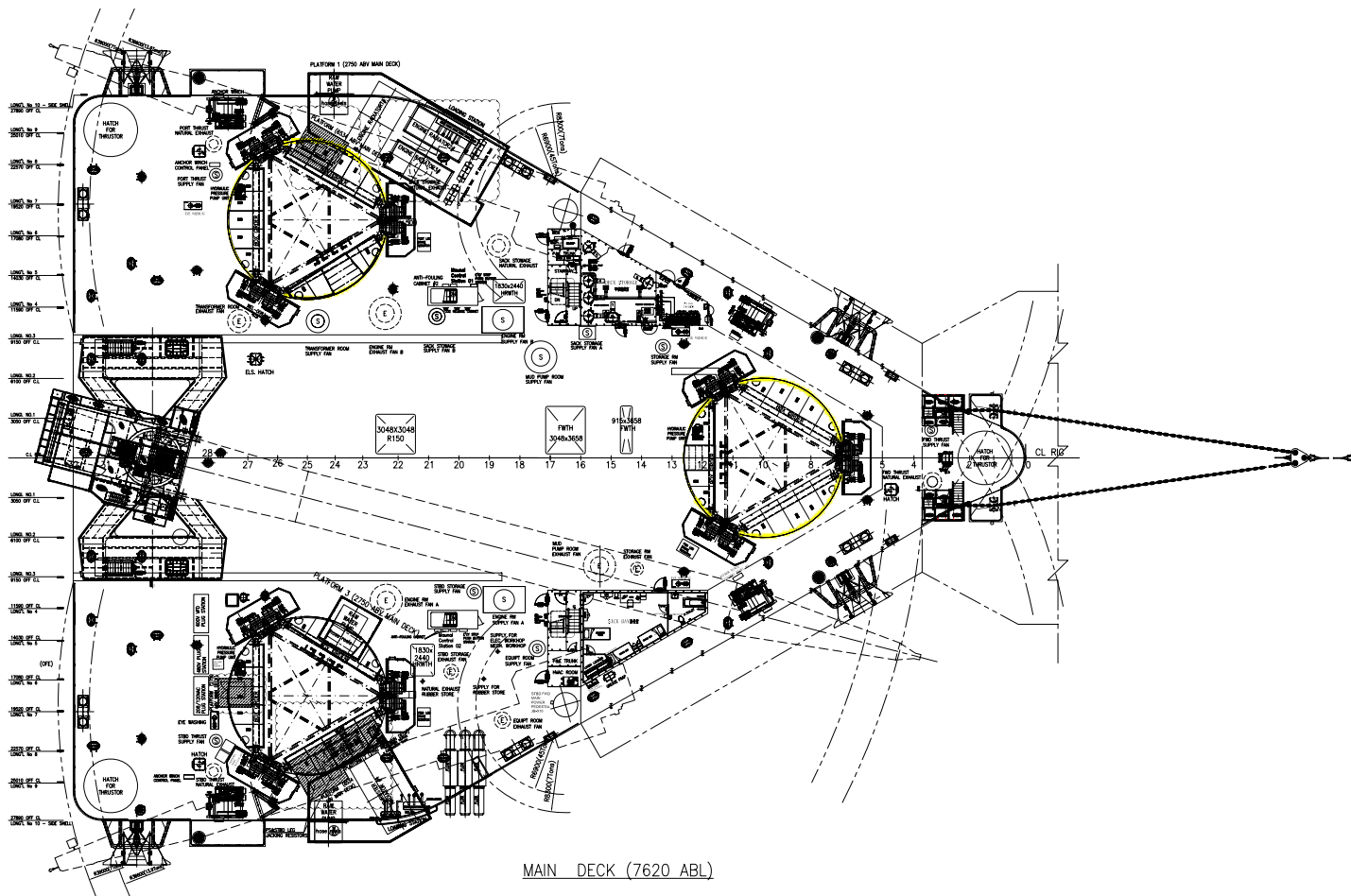
Motion" Tank.

CANTILEVER ALLOWABLE DRILLING/WORK-OVER LOAD

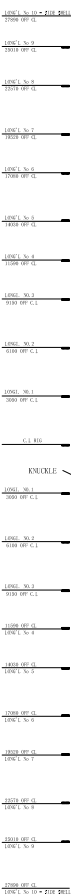
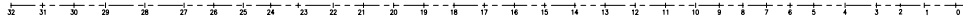
Cantilever Allowable Drilling/work-over loads indicated are the sum of setback, hook, rotary, and conductor tension loads (in Kips) based on the cantilever assembly weight and center of gravity Any increase in cantilever assembly weight will result in a decrease in the allowable Drilling/Work-over loads.



Particulars correct at time of printing but not guaranteed.



LEG LENGTH	ABT.	=	128,946	M
HULL DEPTH		=	7,620	M
HULL LENGTH		=	73,215	M
HULL WIDTH		=	55,780	M



LOWER MACHINERY DECK (1525 ABL)