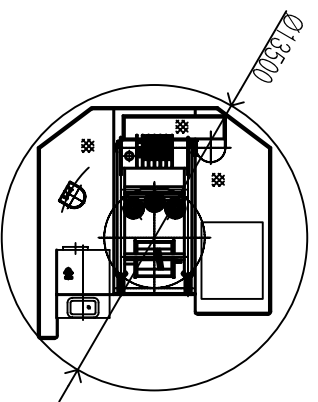
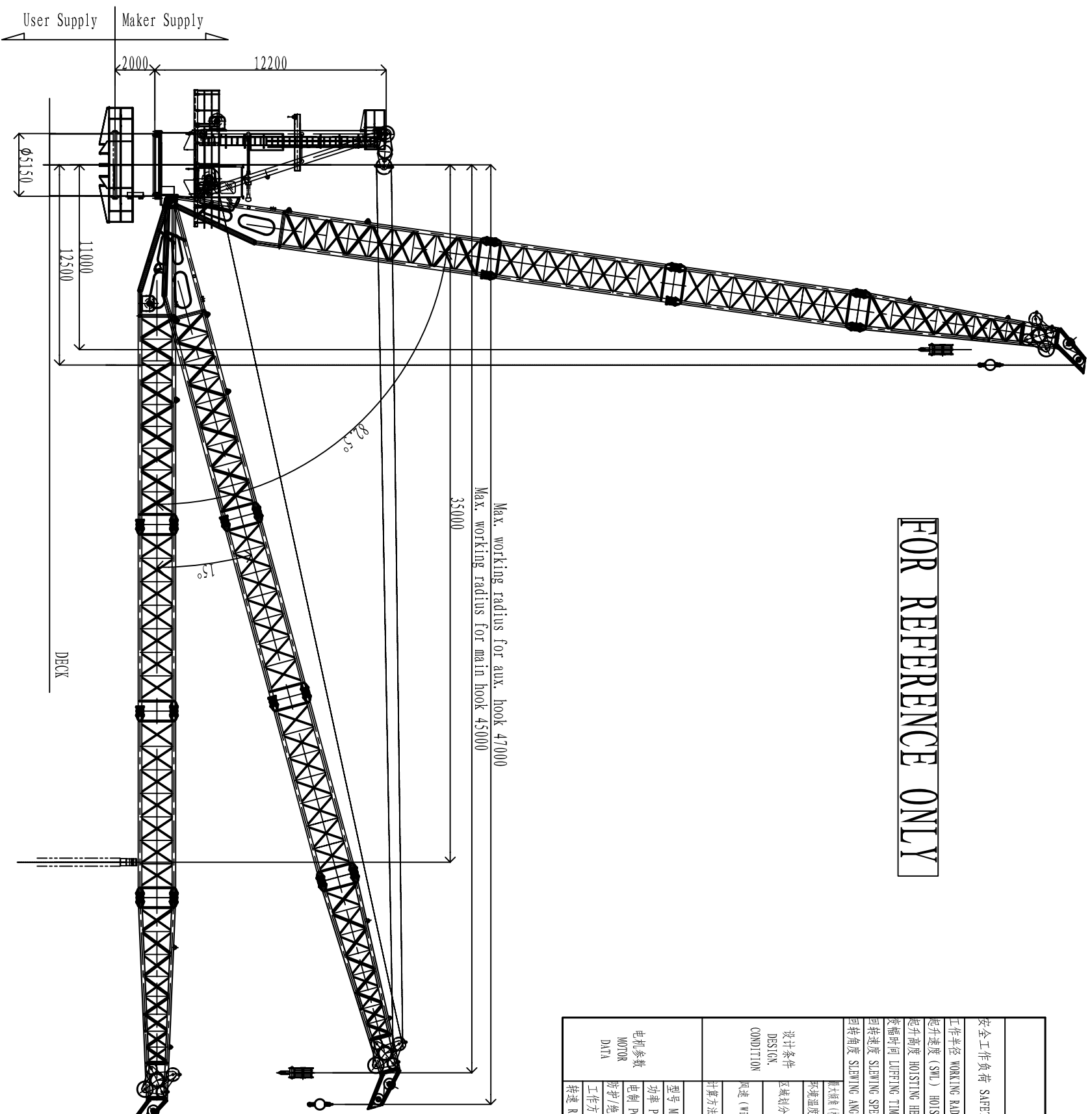
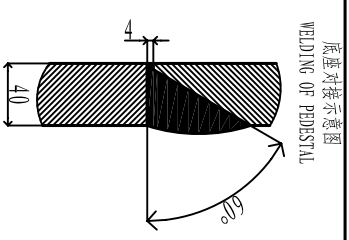


FOR REFERENCE ONLY



技术数据 TECHNICAL DATA			
安全工作负荷 SAFETY WORKING LOAD	主钩 MAIN HOOK (8 FALLS)	副钩 AUXILIARY HOOK	
工作半径 WORKING RADII	SEE LOAD CHART	SEE LOAD CHART	
起升速度 (S/W) HOISTING SPEED	SEE LOAD CHART	SEE LOAD CHART	
起升高度 HOISTING HEIGHT	主钩 0-30m (0/30) S/W 副钩 0-62m (0/62) S/W	0-30m 62m	
空载时间 LIFTING TIME		~ 240Sec	
回转速度 SLEWING SPEED		~ 0.357/min	
回转角度 SLEWING ANGLE		360° 全回转 (UNLIMITED)	
环境温度 (周围温度) AMBIENT TEMPERATURE		±3° ~ 11°	
设计条件 DESIGN CONDITION	区域划分 (AREA CLASSIFICATION)	起重区 (LIFTING AREA)	吊臂 (BOOM)
		吊钩 (HOOK)	吊钩 (HOOK)
		安全工作区 (SAFE AREA)	安全工作区 (SAFE AREA)
		不安全区 (DANGER AREA)	不安全区 (DANGER AREA)
	风速 (Wind Speed)	工作时 (IN SERVICE)	不工作时 (OUT OF SERVICE)
		15 m/s	63 m/s
	计算方法 (Calculation Method)	通用法 (General Method)	
电机参数 MOTOR DATA	型号 MODEL	Y315L1-4-H	
	功率 POWER	160KW (SI) *2	
	电机功率 SUPPLY	440V/60Hz/3ph	
	防护/绝缘 PROTECTION/INSULATION	IP55/F	
	工作方式 WORKING DUTY	S1-100%	
	转速 ROTATING SPEED	1790r/min	
	甲板负荷 DECK LOAD	最大垂直力 VERTICAL FORCE	~ kN
		最大倾覆力矩 CAPSIZING MOMENT	~ kN.m
		最大回转力矩 TORQUE	~ kN.m
		设备重量 DEAD WEIGHT	~ t
		整机自重 WEIGHT	≈ 213 t



- 注:
1. 回转支撑螺栓预紧力665kN.
  2. 本机为右机, 左机对称制造.
  3. 设计按照API-2C 7th, 2012; 计算方法“通用法”.
  4. 设备安装于300人居住工作区.
  5. 人员起吊载荷为3吨(副钩起吊).
  6. 驾驶室在操作.
- NOTE:
1. The pretension force of bolts of slewing ring is to be 665kN.
  2. The right type crane is shown, the left is to be manufactured symmetrically.
  3. Design based on API-2C 7th, 2012; calculation method "General Method".
  4. Crane installed on 300men accommodation Work Barge.
  5. The safety working load for personnel lifting is 3ton(AUX. HOOK).
  6. Operation in cabin by electric joystick.

This document contains proprietary and confidential information which belongs to Tian Offshore Equipment Pte Ltd. It is issued for limited purposes only and remains the property of Tian Offshore Equipment Pte Ltd. Reproduction, in whole or in part, or use of this design or distribution of this information to others is not permitted without the written consent of Tian Offshore Equipment Pte Ltd. This document is to be returned to Tian Offshore Equipment Pte Ltd upon request and in any event upon completion of the use for which it was issued.

CLIENT :	XXXX				
MODEL NO. :	H100C5500-30045				
CERTIFICATION TYPE :	N/A				
SCALE :	N.T.S				
THIRD ANGLE PROJECTION					
REV. :	00				
SHF :	1/1				
DWG NO. :	242TF300045-00				
TITLE :	ELECTRO-HYDRAULIC OFFSHORE CRANE GENERAL ARRANGEMENT				
PROJECT REF. :	TXXXXX/ m				
REV.	DATE	DESCRIPTION	DWN	CHK	APPD
0	15 JULY 2012	ISSUE FOR PROPOSAL	HMSA	LW	UKC
PAGE : A5					