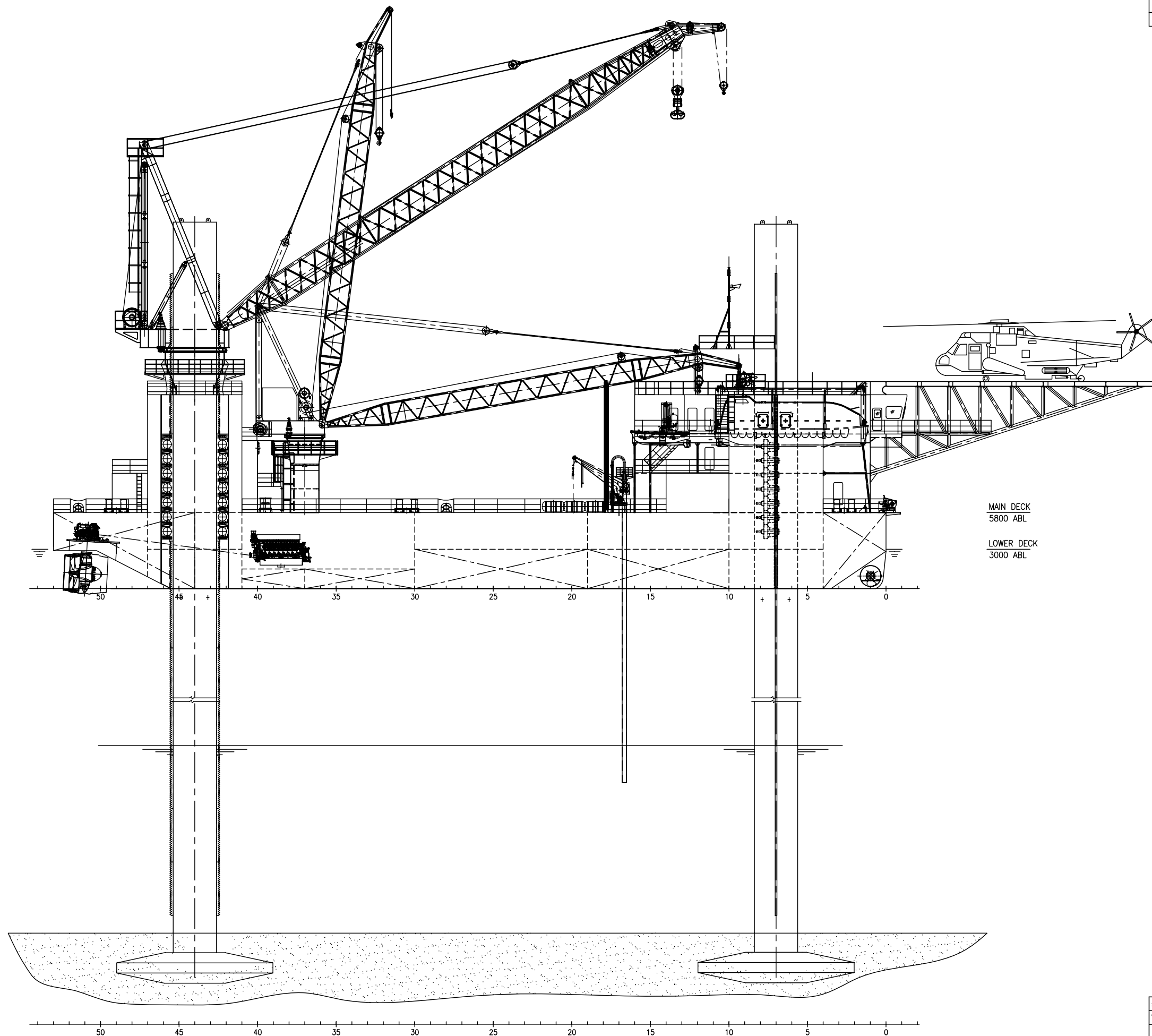


日期 DATE	版本 REV	标记 MARK	说明 DESCRIPTION	设计 DESIGNED	校对 CHECKED	审核 AUDITED



TOP DECK
18300 ABL

03 LEVEL
14800 ABL

02 LEVEL
11800 ABL

01 LEVEL
8800 ABL

HELIPORT DECK
15800 ABL

MAIN DECK
5800 ABL

LOWER DECK
3000 ABL

Description

Four-legged, Self-Elevating, Accommodation Unit.
Class: ABS, A1, Self-Elevating Unit DPS-1 PAS CRC CPS

Main dimension:
 Length overall 85.1 m
 Length 63.6 m
 Breadth 40.0 m
 Depth 5.8 m
 Design draft(max.) 3.0 m
 Max. Deck Allowable Load 5t/m²
 Free Deck Area 1600m²

Variable load 2100t
 ACCOMMODATIONS 150 MEN
 Operating conditions
 Max. Water depth 60 m
 Wave height 6.3 m
 Current 1.03m/s
 Wind speed 25.7m/s

Jack-up Characteristics
 Legs 0.D. 3.3m
 Leg total height 90 m
 Total legs lifting capacity 1400x4=5600t
 Lifting speed 36m/h

Main Enginex2
 TYPE CWZ16V200ZC MCR-1760KW@1000R/MIN

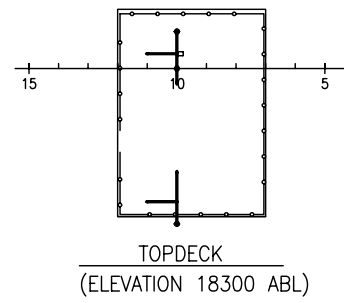
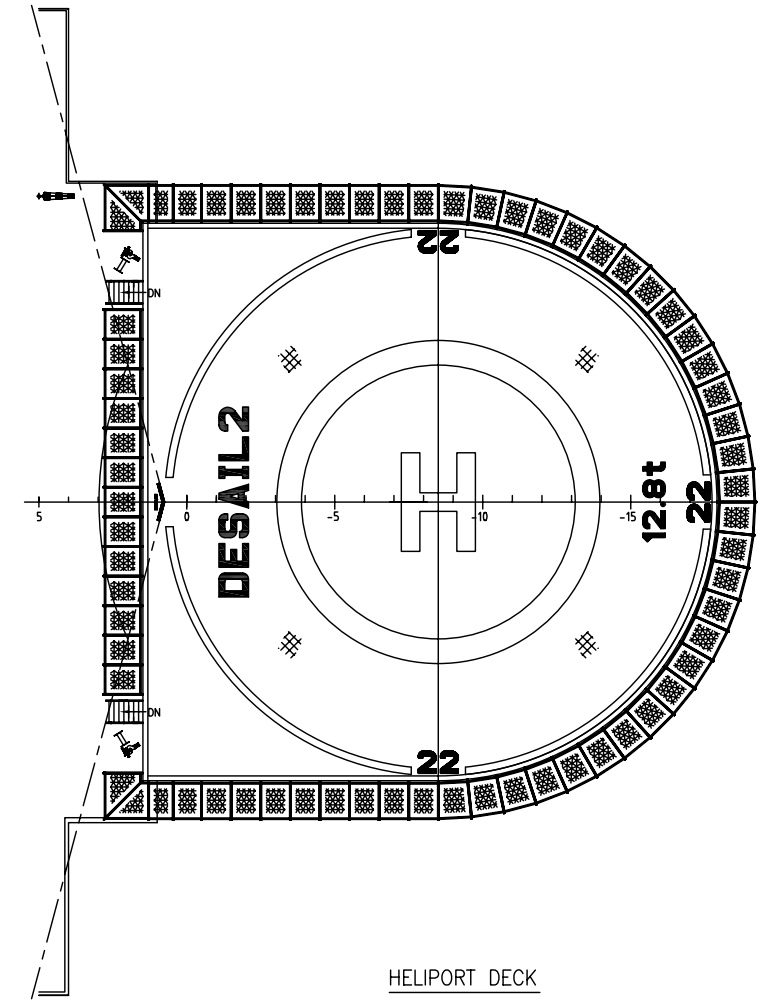
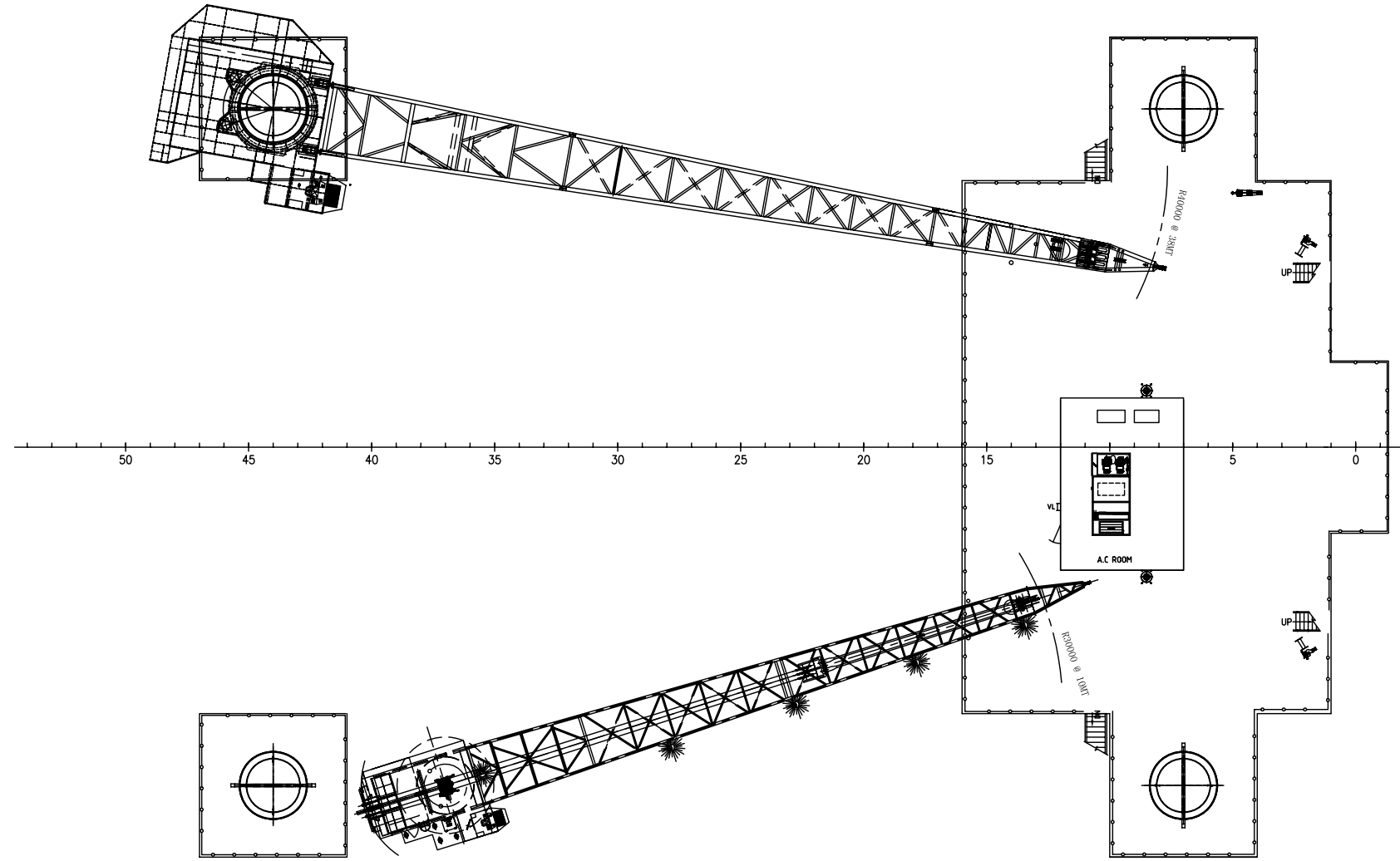
Bow Thruster 8t/600kW

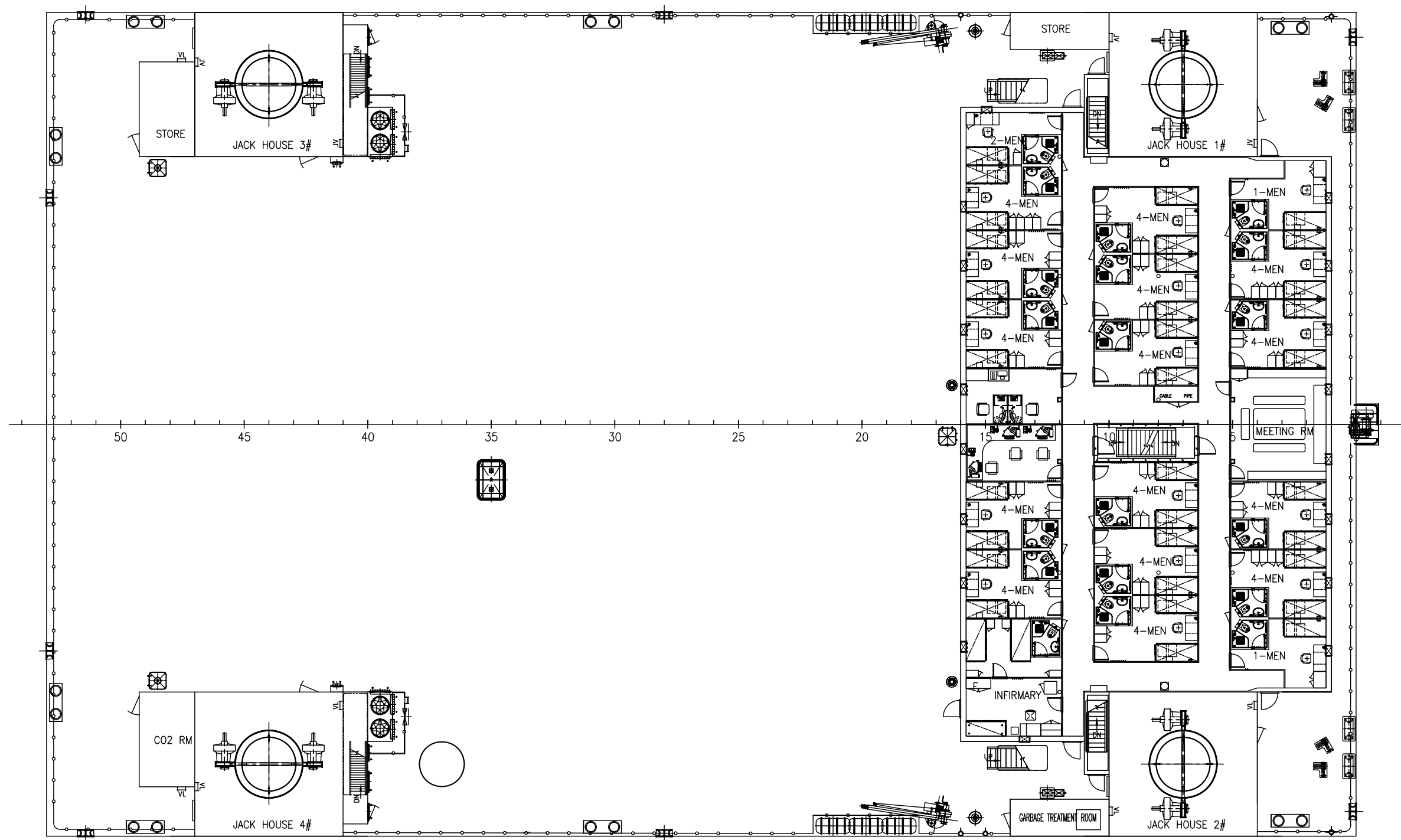
Electric Power Station
 Main Diesel Generator 400V 50Hz 450kWx3
 Emergency Generator 400V 50Hz 200kW

MAIN CRANE CAPACITY 190t @ R=10m(min),
 38t @ R=40m(max)
 AUXL CRANE CAPACITY 20t @ R=20m
 10t @ R=30m

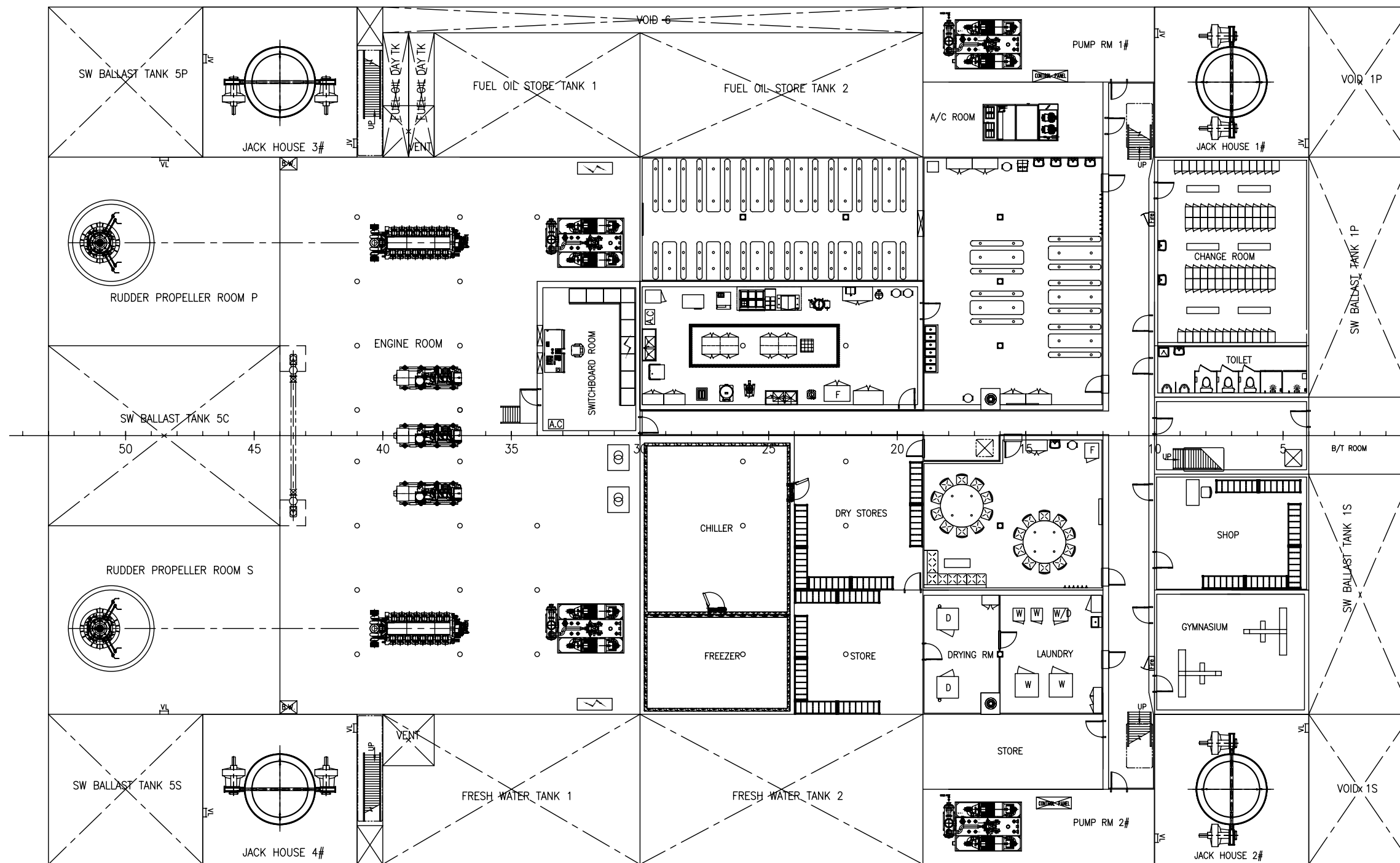
授权会签
 总体
 Shi.rj
 2012.12.10
 结构
 Zhang.p
 2012.12.10
 船装
 Liu.zx
 2012.12.10
 轮机
 Zhang.gy
 2012.12.10
 管系
 Zhang.gy
 2012.12.10
 通风
 Li.ry
 2012.12.10
 电气
 Yang.y
 2012.12.10

船号 HULL NO.	DSME:1202	90m SELF-ELEVATING UNIT(A)	详细设计 DETAIL DESIGN
审图 REVIEWED BY	ABS	GENERAL ARRANGEMENT	比例 SC. 1:150
设计 DGN.	2012.12.10		重量 W. (kg)
校对 CHK.	2012.12.10		页数 TOT. 6
标检 STD.	2012.12.10		页码 P. 1
审核 AUD.	2012.12.10		版本 REV. C
审定 APP.	2012.12.10		
委托方 CLIENT			

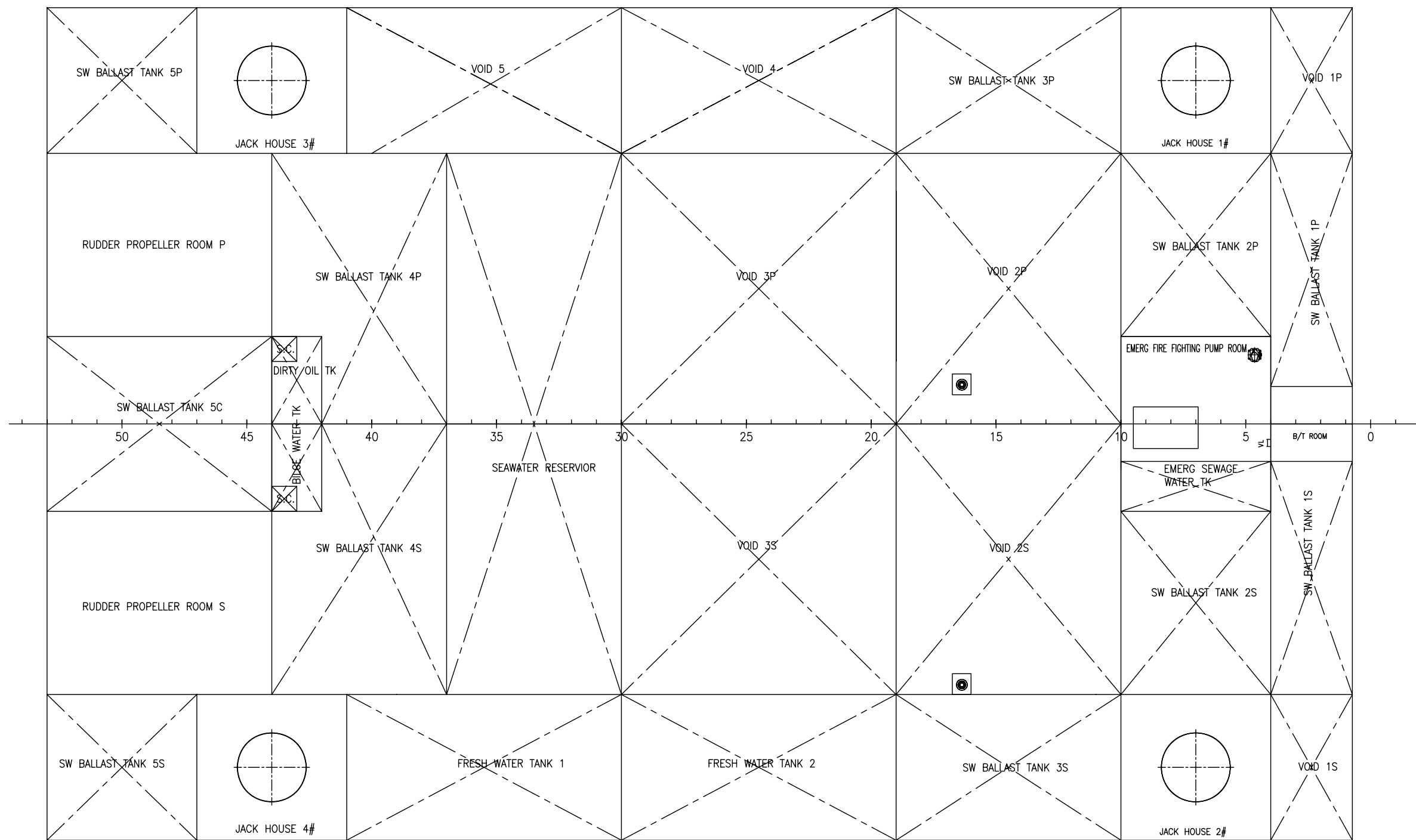




MAIN DECK
(ELEVATION 5800 ABL)



LOWER DECK
(ELEVATION 3000 ABL)



DOUBLE BOTTOM