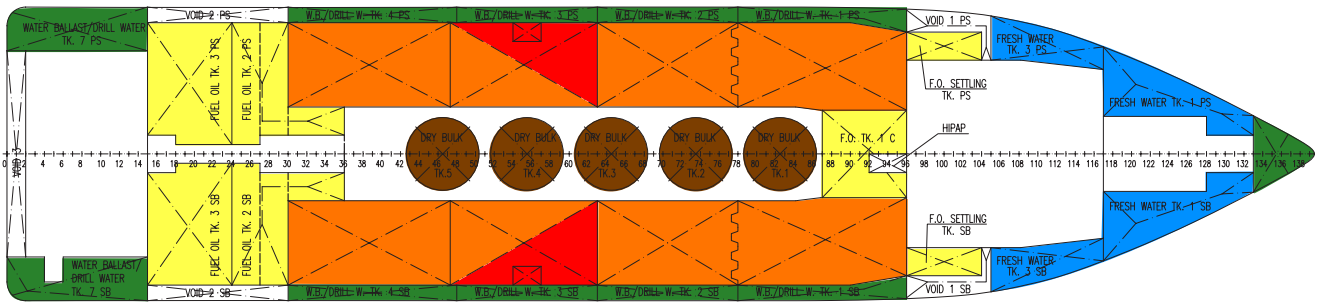


MMC 887 PSV

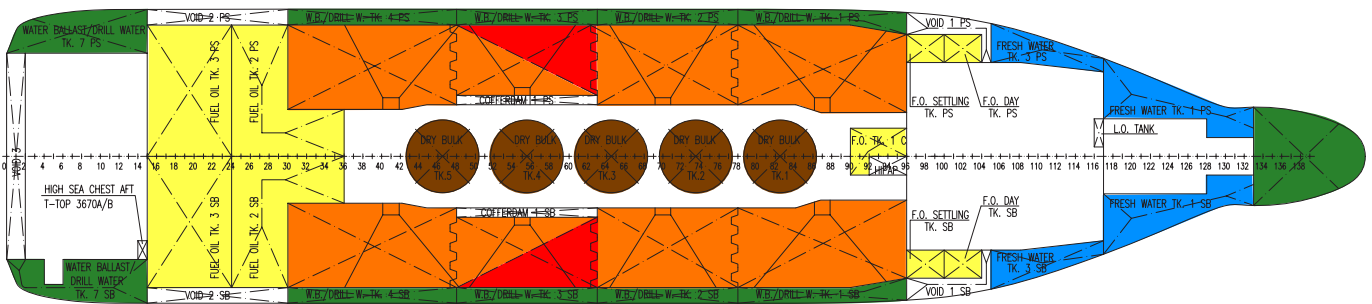
Platform Supply Vessel

Tanks Plan

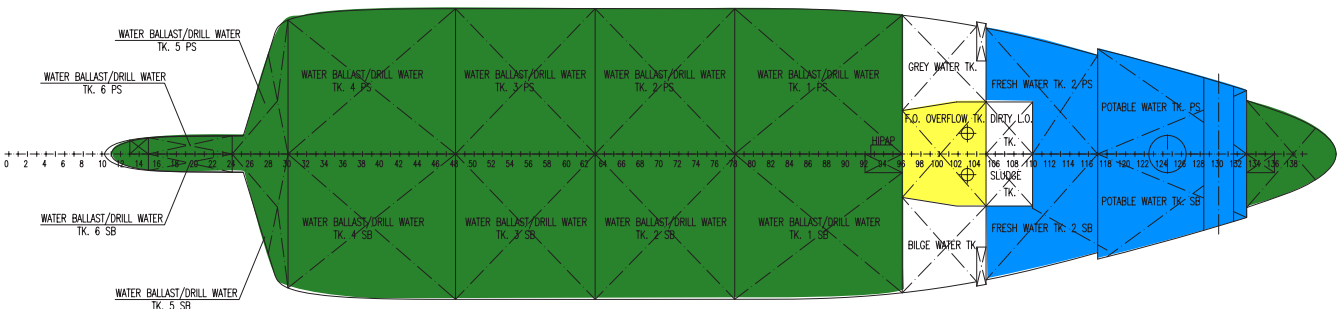
View below A deck



View below deck 4700 A/B



View below deck 1100 A/B



MMC 887 PSV

Platform Supply Vessel



Tanks Capacities

WATER BALLAST / DRILL WATER (98%)			
Tanks	SP.G. (t/m ³)	Capacity (m ³)	Capacity (t)
FORE PEAK	1.025	189.00	193.73
TK. 1 PS	1.025	163.90	167.90
TK. 1 SB	1.025	163.80	167.90
TK. 2 PS	1.025	136.80	140.22
TK. 2 SB	1.025	136.80	140.22
TK. 3 PS	1.025	139.70	143.19
TK. 3 SB	1.025	140.90	144.42
TK. 4 PS	1.025	152.70	156.00
TK. 4 SB	1.025	152.70	156.00
TK. 5 PS	1.025	42.74	43.81
TK. 5 SB	1.025	42.74	43.81
TK. 6 PS	1.025	57.81	59.26
TK. 6 SB	1.025	57.81	59.26
TK. 7 PS	1.025	84.57	86.68
TK. 7 SB	1.025	78.58	80.54
TOTAL		1739.45	1782.94

POTABLE WATER (98%)			
Tanks	SP.G. (t/m ³)	Capacity (m ³)	Capacity (t)
TK. PS	1.000	83.40	83.40
TK. SB	1.000	83.40	83.40
TOTAL		166.80	166.80

LIQUID MUD (100%)			
Tanks	SP.G. (t/m ³)	Capacity (m ³)	Capacity (t)
TK. 1 PS	2.400	360.60	865.44
TK. 1 SB	2.400	360.60	865.44
TK. 2 PS	2.400	289.10	693.84
TK. 2 SB	2.400	289.10	693.84
TK. 3 PS	2.400	342.20	821.28
TK. 3 SB	2.400	342.20	821.28
TOTAL		1984.22	4761.12

FRESH WATER (98%)			
Tanks	SP.G. (t/m ³)	Capacity (m ³)	Capacity (t)
TK. 1 PS	1.000	126.40	126.40
TK. 1 SB	1.000	126.40	126.40
TK. 2 PS	1.000	39.99	39.99
TK. 2 SB	1.000	39.99	39.99
TK. 3 PS	1.000	80.70	80.70
TK. 3 SB	1.000	80.70	80.70
TOTAL		494.18	494.18

LIQUID MUD			
METHANOL (100%)			
Tanks	SP.G. (t/m ³)	Capacity (m ³)	Capacity (t)
TK. 1 PS	2.400	215.10	516.24
TK. 1 SB	2.400	215.10	516.24
TOTAL		430.20	1032.48

FUEL OIL (98%)			
Tanks	SP.G. (t/m ³)	Capacity (m ³)	Capacity (t)
DAY TK. PS	0.87	15.24	13.26
DAY TK. SB	0.87	15.24	13.26
SETTLING TK. PS	0.87	38.10	33.15
SETTLING TK. SB	0.87	38.10	33.15
TK. 1 C	0.87	100.30	87.26
TK. 2 PS	0.87	182.60	158.86
TK. 2 SB	0.87	182.60	158.86
TK. 3 PS	0.87	183.80	159.90
TK. 3 SB	0.87	183.80	159.90
TOTAL		939.78	817.60

DRY BULK			
Tanks	SP.G. (t/m ³)	Capacity (m ³)	Capacity (t)
TK. 1	2.160	80.14	173.10
TK. 2	2.160	80.14	173.10
TK. 3	2.160	80.14	173.10
TK. 4	2.160	80.14	173.10
TK. 5	2.160	80.14	173.10
TOTAL		400.70	865.50

GENERAL:

Design: MMC 887
 Class (ABS): +A1, (E) Offshore Support Vessel, +AMS, +DPS-2, +FFV Class 1
 Flag: St. Vincent and the Grenadines
 Owner:
 Yard:
 Yard Built no.

MAIN PARTICULARS:

Length overall: 87.075 [m]
 Length between p.p.: 83.00 [m]
 Breadth moulded: 18.80 [m]
 Depth Main Deck: 7.40 [m]
 Max. summer draft: 6.05 [m]
 Cargo Deck Area: 1000 [m²]
 Deck Cargo: approx. 2480 [MT]
 Deadweight at 6.05 [m]: 5145 [MT]
 Gross Tonnage: 3671 [-]

PERFORMANCE:

Speed at 5.0 [m]: 14.3 [knots]
 Fuel consumption:Max. Transit speed 14.3 [knots]
 draft 5.0 [m]: 24.0 [MT/24h]
 Service speed 12.0 [knots]; draft 5.0 [m] 15.7 [MT/24h]
 DP-2 offloading (3 cargos): 16.5 [MT/24h]

MACHINERY SYSTEM:

Main engines: 4 x Cummins QSK60-D(M)
 4 x 1 900 [kW]; 4 x 2 547 [HP]
 Emergency / harbor engine
 1 x Cummins 1 x 435 [kW]; 1 x 570 [HP]
 Bow thruster: 1 x Rolls Royce
 TT1850 DPN CP 1 x 910 [kW]; 1 x 1 220 [HP]
 Retractable thruster: 1 x Rolls Royce
 UL1201 CP 1 x 800 [kW]; 1 x 1 072 [HP]
 Stern Thruster: 2 x Rolls Royce
 255P30 FP 2 x 2 000 [kW]; 2 x 2 680 [HP]

GENERATORS:

Main Generators: Water cooled 4 x ABB
 4 x 2 282 [kVA]
 Emergency Generator: Air cooled 1 x ABB
 1 x 481 [kVA]

PUMPS WITH DISCHARGE RATE:

Fuel oil cargo transfer:
 1 x DESMI pump off 150/20 [m³/h] 9 bar, electric driven
 Ballast Water / Drill Water:
 1 x DESMI pump off 150/80 [m³/h] 9 bar, electric driven
 Fresh Water:
 1 x DESMI pump off 150/80 [m³/h] 9 bar, electric driven
 Liquid Mud:
 4 x P.G.pumps off 150 [m³/h] 14 bar, electric driven
 Mud Cleaning System:
 BUTTERWORTH for 8 off liquid mud tanks
 Dry Bulk:
 2 x INGERSOLL-RAND compressors off 1100 [m³/h]
 5.6 bar, electric driven
 Bilge:
 1 x DESMI pump off 65 [m³/h] 2.5 bar, electric driven
 Methanol pump:
 HAMWORTHY DW 100/100-4-K Cbm 0.57/h 1.13 MPa
 FiFi Pumps (FFV Class 1):
 2 x FFS pumps 1600 [m³/h]

CARGO SYSTEMS:

Dry Bulk: 5 x "p" tanks; 5 x 80.14 [m³]
 Maker: Van Aalst:
 2 x INGERSOLL-RAND air compressors, 1200 [m³/h]
 7.0 bar, electric driven

DECK MACHINERY:

Provision crane SB side:
 1 x provision, straight arm deck crane - 2 [MT] @ 10 [m]
 Maker: Zhenjiang West; China

Tugger Winches:

2 x 10 [MT]; electric driven
 Maker: South China

ANCHORING AND MOORING EQUIPMENT:

Windlass:
 2 x combined windlass / mooring winch; electric driven
 Maker: South China

Capstans:

2 x capstans aft; 7.5 [MT] pull; electric driven
 Maker: South China

ACCOMMODATION:

Number of persons: 52 persons
 16 x One man cabins
 10 x Two men cabins
 4 x Four men cabins
 1 x Dispensary
 1 x Office

RESCUE EQUIPMENT:

MOB: 1 x SOLAS type MOB for 6 persons
 made from GRP
 Speed: 6 [knots]
 Davit: Single arm rescue boat crane
 SWL: 14 [kN]

DYNAMIC POSITIONING SYSTEM:

DP - 2 (Kongsberg) 3 x Wind Sensor
 3 x MRU
 3 x Gyrocompass
 2 x DGPS
 2 x Radius System
 2 x Independent Joystic
 Interface for future HiPAP installation
 Follow Target Mode (R.O.V. mode)
 2 x Portable Joystic

NAVIGATION / COMMUNICATION EQUIPMENT:

Radar: 1 x Furuno ARPA S-band
 1 x Furuno ARPA X-band
 Satellite: 1 x INMARSAT C
 Gyro: 3 x Gyrocompasses (combined use with DP-system)
 Other Equipment: 1 x GPS for Navigation
 1 x Complete GMDSS A3 Radio Installation
 1 x AIS (Automatic Identification System)
 1 x VDR (Voyage Data Recorder)
 1 x SSAS Distress Alarm (combined with INMARSAT-C)
 Maker Furuno