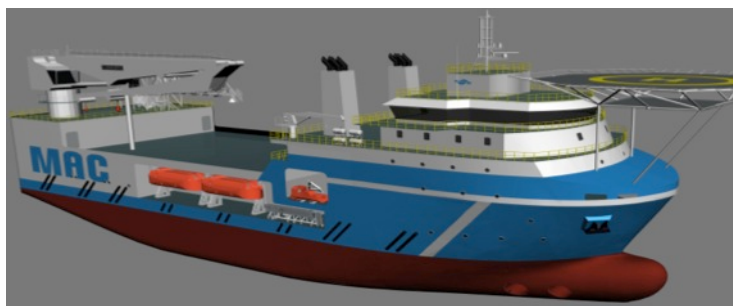


MAC MOTEL

DPS 2, Diesel Electric
Accommodation / Maintenance Support Vessel



89m-MAC MOTEL - DPS-2 - Accommodation Support Vessel

PRINCIPAL PARTICULARS

Year Built	2016
Builder	
Call Sign	TBA
Official No.	TBA
Class	ABS +A1 (E) Offshore Support Vessel, SPS - ENVIRO – GP- UWILD – FFV1 – HAB(WB) AMS + DPS-2 - ACCU
Flag	TBA

DIMENSIONS

Length Overall	89.00m
Length BP	84.03m
Beam Molded	24.00m
Depth to Main Deck	08.40m
Design Draft	06.04m

MACHINERY

Main Diesel Generators	4 x 2200 Kw (total 8800Kw)
Emergency/Harbour Generator	1 x 1100 Kw
Shore Power	1 x 400A Shore Supply Receptacle
Thrusters	2 x 2470Kw 360 deg Azimuths
Bow Thruster	2 x 1000 Kw tunnel Thruster
Retractable Bow Thruster	1 x 1000 KW Azimuth

SPEED

Speed at 05.00m Draft	12.50 Knots
Type of Fuel	Marine Gas Oil
Fuel Consumption/24hrs	10 – 12mt at eco speed (8.5knts) 14 – 15mt at service speed (10.5knts) 8-10mt on DP

CAPACITIES

Cargo Systems fully automated	Monitored through K-Master
Fuel Oil	1200 Cu.M
Fresh Water	1500 Cu.M
Water Ballast/Drill Water	3000 Cu.M
Cargo Deck Free Area	1000 m ²
Deck Cargo Capacity	600t Tons
Deck Strength	5t/ m ²
Deadweight	4500t at Scantling draft
Freezer	To store provisions for a period of 30 Days
Cooler	To store provisions for a period of 30 Days

UTILITIES

Fuel Pumps	2 x 15 Cu.M @ 80m Hd
Fresh Water Pumps	2 x 15 Cu.M @ 80m Hd
Fresh Water makers	2 x 75 Cu M day
Sewage Treatment Plant	sized for 250 POB
Bilge / Fire Pump	100 Cu M @ 125m Hd

HELIDECK

S 92 / Super Puma to CAP 437

ACCOMMODATION

SPS Compliant

Cabins	8 Single Cabins 111 Doubles cabins
Total Beds	230 total
1 x Hospital	2 beds
Offices	6 x 2 desks
Conference room	12 seat table
Fully Air Conditioned.	HVAC Integrated with F&G system
Fixed gas Detection	H2s and LEL
POB Monitoring System	EPIC with SMART Cards

MAIN CRANE

60t

	60t @ 10m - 18t @ 40m
Aux Winch	10t @ 50m Man riding
Provision Crane	2t @ 10m

RADIO & NAVIGATION EQUIPMENT

GMDSS: Area 3
1 x Inmarsat C with GPS and LRIT
1 x MF/HF-DSC Radio Telephone
2 x VHF-DSC Radio Telephone
1 x SSB Transceiver 6 Channel DSC
1 x 96nm X-band Radar 20.1" display
1 x 96nm S band 20.1" display
4 x VHF Portable radios
1 x Magnetic Compass
1 x Gyrocompass
1 x DGPS
1 x Autopilot
1 x Duplex VHF with DSC
1 x Echo Sounder ,Speed log
1X VDR
1 x Anemometer
1XBNWAS
1 x Weather Fax Receiver
1 x Auto Telephone system
1 x Sound Powered Telephone system
1 x PA/Talkback System
Local Area Network (LAN) connected
1 x TV and Radio system
1XAIS

DP KONGSBERG C Pos DPS-2, with following reference systems:

3 x Gyro Compass – 3 MRUs – 3 Wind Sensors – 2 DGPS
1 x Cyscan laser 1 x Radius
Joystick
DP Interfaced with 4 Point Mooring Syaytem

DECK & AUX. EQUIPMENT

Anchors 2 x 3037 Kg HHP	
Chain 522m x 50mm U3	
Anchor/ Mooring Windlass	2 x 12t @ 0 – 09m min C/W warping heads
4 Point Mooring System	4 x 5000 Kg Delta Flipper Anchors
Holding Brake 100t	4 Winches with 1000m 40mm Wire
Winch Speed	10-50t @ 0 – 30m min
2 x Aft Mooring Winch	12t @ 12m Min

FIRE EXTINGUISHING SYSTEM

Fi Fi Class 1 - 2 x 1800 Cu.m @ 125m Hd	
Monitors Remote control 2 x 1200 Cu.M One with duel Foam /Water	
Emergency Fire Pump 100 Cu.M @ 125m Hd	
Fixed Co2 System	Engine Room
Fixed Water Mist System	Engine Room
4 x fireman outfits	
2 x fire blankets for engine room and galley	

LSA EQUIPMENT

1 x Diesel Powered Fast Rescue Boat for 15 persons. With A Frame
Launch and Recovery Davit
10 x 25 man life rafts SOLAS approved each side
16 x Lifebuoys SOLAS approved
238 Lifejackets as per SOLAS requirement
1 x EPIRB SOLAS approved
1 x Line Throwing Apparatus
2 x Orange Smoke Signals
SOLAS approved line throwing appliance
1 x First Aid Kit
1 x daylight signaling light
1 x air horn

AUXILIARY EQUIPMENT

2 x Ships Air Compressor 40 m ³ hr @ 30 Bar
Oily Bilge Water Separato12
Garbage Converter
6 man Aluminum work boat

Rev 01
2/5/14

