

5,000 BHP Towing & Anchor Handling Twin Screw Tug

| General Information | | PRINCIPAL DIMENSION | |
|---------------------------------|--|---------------------|--------------|
| Vessel Name | Ocean Union / Unity 1 / Unison / Unite | Length Overall | 40.00 Meters |
| Year Built/ Port of Registry | 2009 / Singapore (Ocean Union) 2009 / Indonesia (Ocean Unity 1) 2010 / Singapore (Ocean Unison) 2010 / Indonesia (Ocean Unite) | Breadth Moulded | 11.40 Meters |
| Class | Germanischer Lloyd | Depth Moulded | 4.95 Meters |
| | | Draft Design | 4.40 Meters |
| | | GRT / NRT | 495 / 149 |

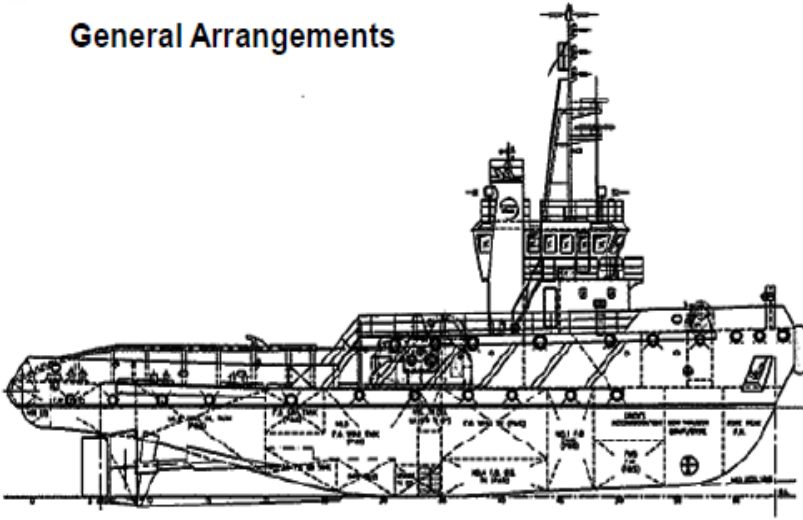
| CAPACITY | |
|---------------------------------|--|
| Fresh Water / Fuel Oil Capacity | 80 Cubic Meters / 450 Cubic Meters |
| Endurance | Approx. 23 Days |
| Main Engine & Gearbox | 2 x Yanmar 6EY26 Diesel Engines Producing 1,920 Kilowatts each @ 750 Rpm c/w 2 x Yanmar YXH 2500C Reverse Reduction Gearboxes of 3.03 : 1 Ratio |
| Bollard Pull | Approx. 65 Tons |
| Speed | Approx. 10 Knots |
| Clear Deck Space | 10.5 Meters x 8.5 Meters |

| AUXILIARIES & DECK EQUIPMENTS | |
|-------------------------------|---|
| Generators | 3 x Cummins Diesel Engines Model: NTA855-G2 coupled with 250 KW Stamford Alternator Model: HCM434F -415V/3Ph/50Hz |
| Propulsion | Twin Kaplan Propeller With Fixed KortNozzle |
| Bow Thruster | HRP 3001TT/220KW -3 Tonnes |
| Towing/Anchor Winch | Waterfall Double Drum Hydraulic Winch with Local Control & Remote Control in Wheelhouse, 150 Tonnes Brake Holding Capacity, 75 Metric Tonnes Line Pull @ 15 M/min, 2 x Drum Capacity 1000 M x 52 mm Wire |
| Stern Roller | 4.5m length x 1.6 m diameter |
| Tugger Winch | 2 x 10 Tonnes Single Drum Hydraulic Winch Line Pull @ 15 M per minute with Local Control |
| Capstan | 1 x 10 Tonnes Hydraulic Capstan Line Pull @ 10M per minute with Local Control |
| Control Station | Bridge FWD & AFT Control |
| Towing Pins & Sharkjaws | Combined 100Tonnes Hydraulic Tow Pins / Sharkjaws |
| Firefighting | Fire Pump Coupled To Independent Diesel Engine of capacity 1,200m ³ /hr @ 10 Bar Two Fixed Fire Monitors 10,000 litres/min @ 80 Meters |
| Communication Equipment | GMDSS (Area 3) / Radar / GPS / Echo Sounder / Speed Log / Navtax/ Weather Fax / SART / EPIRB |
| Accommodation | Fully Air-Conditioned with total of 14 Berth Cabins 1 x 2 Berths Cabins, 2 x 2 Berths Cabins, 4 x 2 Berths Cabins |

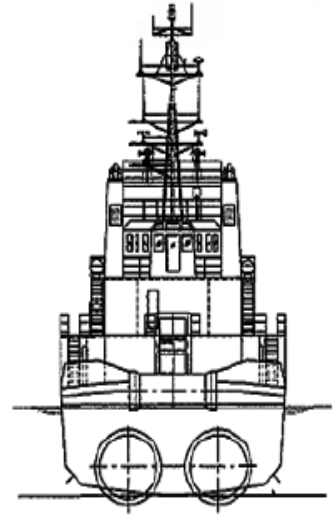
Particulars given herein are entirely without warranty as to correctness and interested parties must satisfy themselves by inspection or other means of the details of the vessel or vessel referred to.

5,000 BHP Towing & Anchor Handling Twin Screw Tug

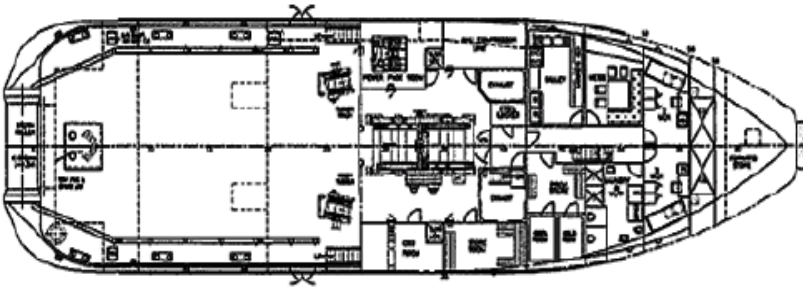
General Arrangements



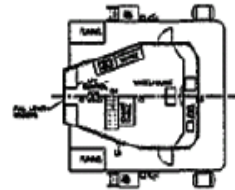
Profile



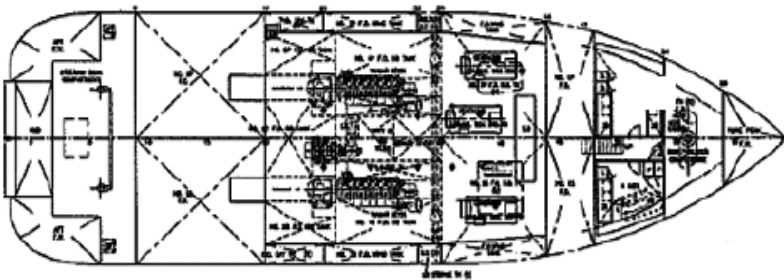
Stern View



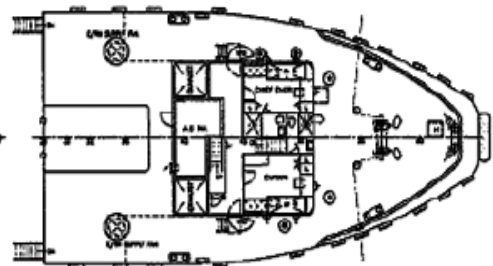
Main Deck



Wheelhouse Deck



Below Main Deck



Forecastle Deck

Particulars given herein are entirely without warranty as to correctness and interested parties must satisfy themselves by inspection or other means of the details of the vessel or vessel referred to.