

## 111m Accommodation Crane Work Barge (300 men)

### PRINCIPAL PARTICULARS

Length Overall	111.56m
Breadth Moulded	31.70 m
Depth Moulded	7.31 m
Draft (Max)	4.50 m
Built	2011 Batam
GRT / NRT	11,039 / 3,312, approx.
Class	ABS
Notation	+A1 Barge with description "work & accommodation"
Flag	Panama
Call Sign	TBA

### CARGO CAPACITIES

Deadweight	9,582 t, approx.
Deck Cargo	3,500 t, approx.
Deck Strength	12.5 t/m <sup>2</sup>
Clear Deck Area	1,800 m <sup>2</sup> , approx.
Fuel Oil	1,727 m <sup>3</sup> , approx.
Fresh Water	2,972 m <sup>3</sup> , approx.
Ballast Water	5,664 m <sup>3</sup> , approx.
Drill Water	1,061 m <sup>3</sup> , approx.
Liquid Mud	768 m <sup>3</sup> , approx.
Cement Tank	Nil
Freezer/Chiller	50 m <sup>3</sup> / 55 m <sup>3</sup> , approx.
Foam / Detergent	1 m <sup>3</sup> / Nil

### PUMPS

Fuel Oil	1 x 118 m <sup>3</sup> /h @ 60 m head
Fresh Water	1 x 120 m <sup>3</sup> /h @ 60 m head
Ballast Water	2 x 500 m <sup>3</sup> /h @ 45 m head
Drill Water	1 x 120 m <sup>3</sup> /h @ 60 m head
Liquid Mud	Nil

### MACHINERY

Diesel Generator	5 x 580 kW @ 1,800 rpm; Caterpillar 3412 DITA c/w Leroy Somer LSAM49.1M6, 440V/3ph/60Hz
Emergency Diesel Generator	1 x 99 kW @ 1,800 rpm; Caterpillar 3056 DITA c/w Leroy Somer LL3024F, 440V/3ph/60Hz

### DECK EQUIPMENT

8-point Mooring	8 x single drum electro-hydraulic; Mentrade HMW-90T c/w tension sensors, wire length counter, 16 vertical sheaves & 8 universal fairleads suit for 1400 m (L) x 52 mm (Ø) SWR
Drum	85 mt @ 0-12 m/min @ 1st layer (1st speed)
Rated Pull	50 mt @ 0-19 m/min @ 1st layer (2nd speed) 28 mt @ 0-32 m/min @ 1st layer (3rd speed) 15 mt @ 0-48m/min @ 1st layer (4th speed)
Brake Capacity	150 mt static @ 1st layer
Anchor Wire	8 x 1,400 m (L) x 52 mm (Ø) SWR
Anchor	4 x 7,000 kg Flipper Delta Anchors 4 x 10,000 kg Flipper Delta Anchors
Pennant Buoy	10 x 2.45m (L) x 1.83m (Ø) foam-filled type
Capstan	4 x 10 mt @ 20 m/min electric; Mentrade HVC-10T
Tugger Winch	1 x 15 mt @ 15 m/min electro-hydraulic; Mentrade HUW-15T
Helideck	suitable for Mi8
Outer area	25.62m x 25.62m
Deck Crane	1 x 300 mt Huisman pedestal-mounted offshore crane c/w 46m jib and fly jib
Main Hoist :	Static Load Cap: 300 mt / 9 falls @ 11m radius 72 mt / 9 falls @ 44m radius Dynamic Load Cap: 240 mt / 9 falls @ 12m radius 48 mt / 9 falls @ 44m radius
Auxiliary Hoist:	30 mt @ 30m/min, single line at radius 9.2 - 53.6m
Tugger Hoist:	10mt @ 30m/min

### ACCOMMODATION

Single berth	8 x 1 berth
Double berth	14 x 2 berth
Four (4) men berth	66 x 4 berth
Total	<u>300</u> berth

All cabins fully air-conditioned, comply to ILO 92, IMO Resolution A468 (XII)

### RADIO & NAVIGATION EQUIPMENT

GMDSS	Area 2 comprising:
SSB	1 x Furuno FS-1570T
Inmarsat F	1 x Furuno Felcom 70
VHF Radio	2 x Furuno FM 3000 with built-in DSC 1 x Furuno FM 8800S wth built-in DSC
Navtex Receiver	1 x Furuno NX 700A
SART	2 x Mc Murdo S4
EPIRB	1 x Mc Murdo E3A
Portable VHF Radios	3 x Mc Murdo R2
Portable Marine VHF Radios	3 x Motorola GP-328 8 x ICOM M88
VHF Air Band Transceiver	1 x ICOM IC-A200 1 x ICOM IC-A6 (HLO)
Satellite Mini-M	1x Sailor Trane
VHF for Crane	1 x Simrad RT62
Radio Beacon Tmitter	Nautel ND500II
X-band Radar	1 x Furuno 1932 MK2
Echo Sounder	1 x Furuno FE700
GPS	1 x Furuno GP90
Satellite Compass	1 x Furono SC502
Weather Fax	1 x Furuno FAX 207

Barge also fitted with Vingtor PA Talkbalk System and Sound Powered Telephones

### FIRE FIGHTING & SURVIVAL EQUIPMENT

Fire Pump	1 x 150 m <sup>3</sup> /h @ 110 m head
Fire Monitors	2 x 73.5 m <sup>3</sup> /h @ 7 bar
Emergency Fire Pump	1 x 50 m <sup>3</sup> /h @ 80 m head
Life Rafts	24 x 25 men SOLAS approved
Rescue Boat	1 x 6 persons SOLAS approved c/w davit

Fire Detection & Alarm System	in all Enclosed Spaces
Fixed CO <sub>2</sub> System	for Generator Room, Paint Store & Galley Duct
Fixed Automatic Water Sprinkler System	for Accommodation Spaces including Store & Workshop

### OTHER FACILITIES

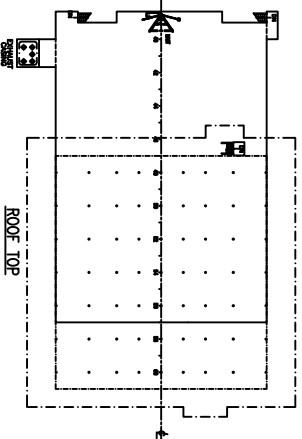
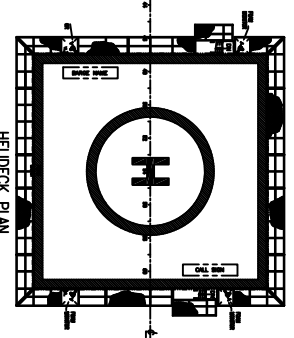
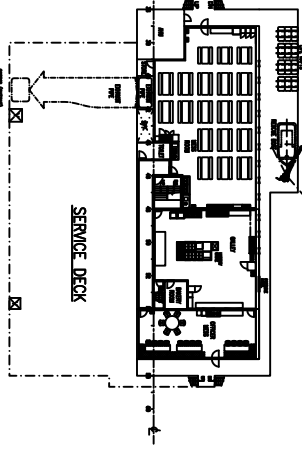
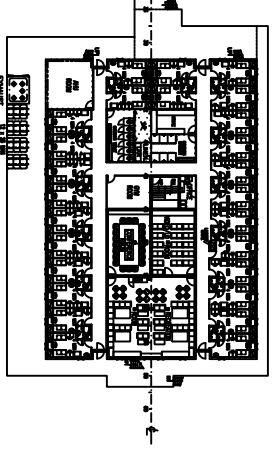
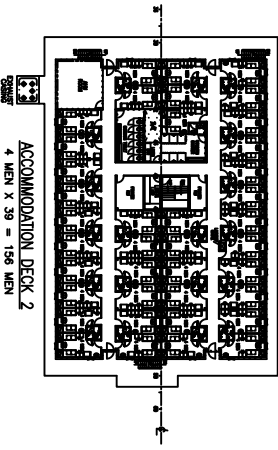
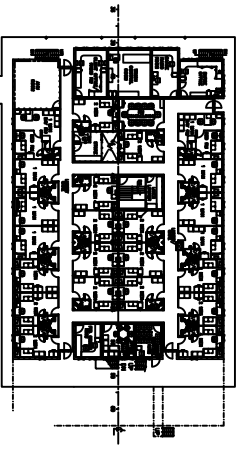
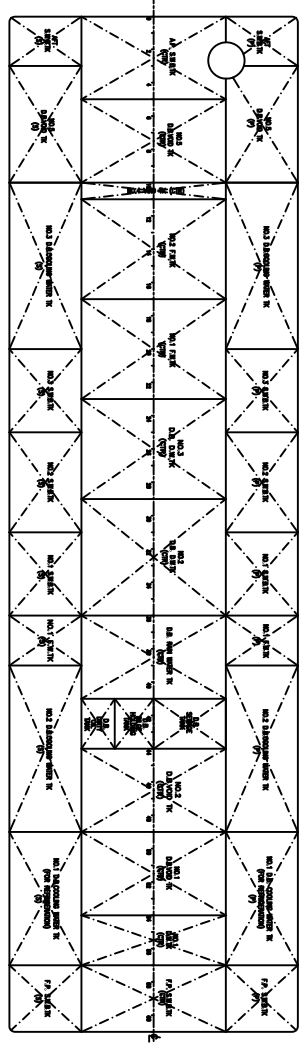
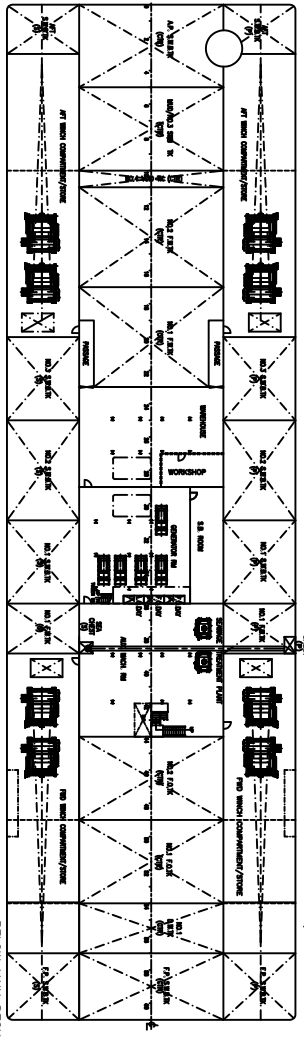
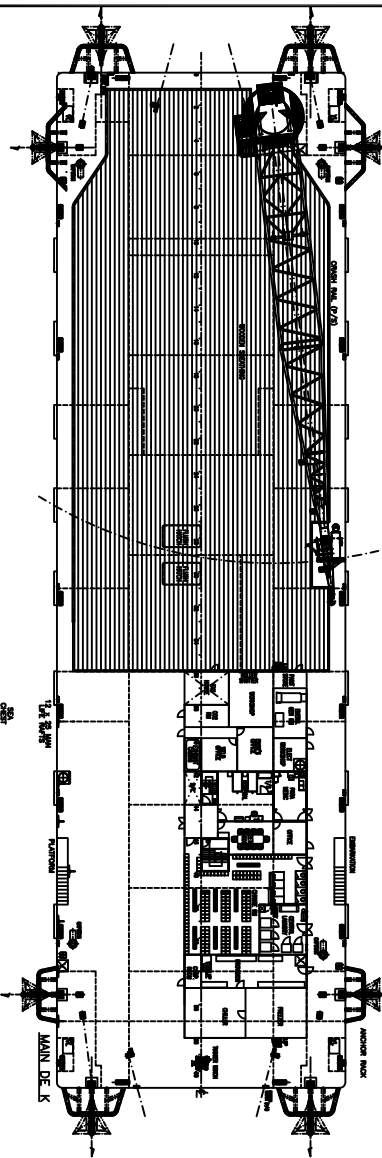
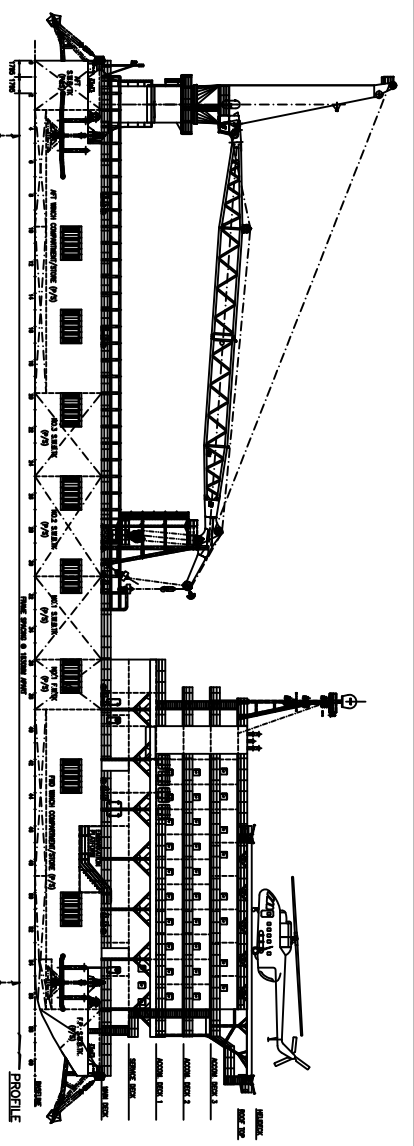
Hospital	2 x single berth hospital with attached paramedic room
Offices	Total 6; 3 on main deck, 1 on Deck 1, 2 on Deck 3
Conference Rooms	1 with seating capacity for 20 men
Messrooms	1 with seating capacity for 10 men 1 x officers mess with seating capacity for 30 men 1 x main mess with seating capacity for 150 men
Recreation Rooms	1 main room with seating capacity for 80 men & 1 for officers with seating capacity for 15 men
TV/Video Room	1 with seating capacity for 30 men
Others	2 x Prayer Rooms, 1 x Meeting Room, 1 x Fwd Control Room, 1 x Change Room, 1 x Laundry/Drying Room, 1 x Dry Provision Room, 1 x Arrival/Departure Room for upto 15 men, 1 x Winch Control Room, 1 x Barge Radio Room 1 x Gym Room
Workshop	1 complete w/ lathe, drilling machine, grinding machine, electric saw, oxy-acetylene welding machine

### MISCELLANEOUS

Oil Water Separator	1 x 1 m <sup>3</sup> /h c/w 15 ppm alarm
Sewage Treatment Plant	2 x 150 men
Water Maker	2 x 50 m <sup>3</sup> /day reverse osmosis

Particulars are believed to be correct but not guaranteed. All figures given are approximate only. Owners reserve the right to amend the specifications without notification.

10 April 2011



PRINCIPAL DIMENSIONS

LENGTH O.A. 111.56 M  
 BREADTH MLD 31.70 M  
 DEPTH MLD 7.31 M

COMPLEMENT :

ACCOMMODATION DECK 3 40 MEN  
 ACCOMMODATION DECK 2 156 MEN  
 ACCOMMODATION DECK 1 104 MEN  
 300 MEN

NO.	REVISIONS	BY	DATE
PROJECT	111M ACCOMMODATION/CRANE WORK BARGE (300 MEN)		
TITLE	GENERAL ARRANGEMENT		
DESIGN	JAW MARINE LINES PTE LTD		
BUILDER	PT JAW MARINE SHIPPING		
DRAWN	28.10.2008	SCALE	DWG. NO.
CHECKED	1:300		ST1496-G1 0
NOTED			SHEET
			OF