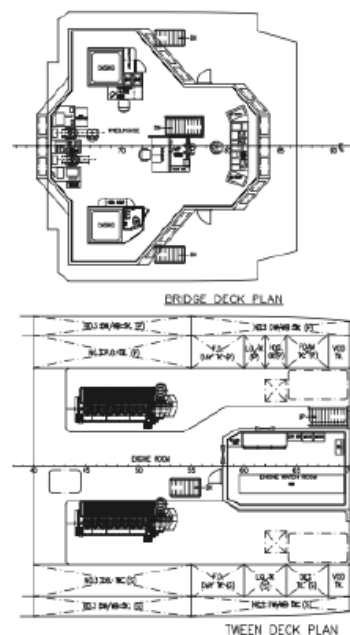
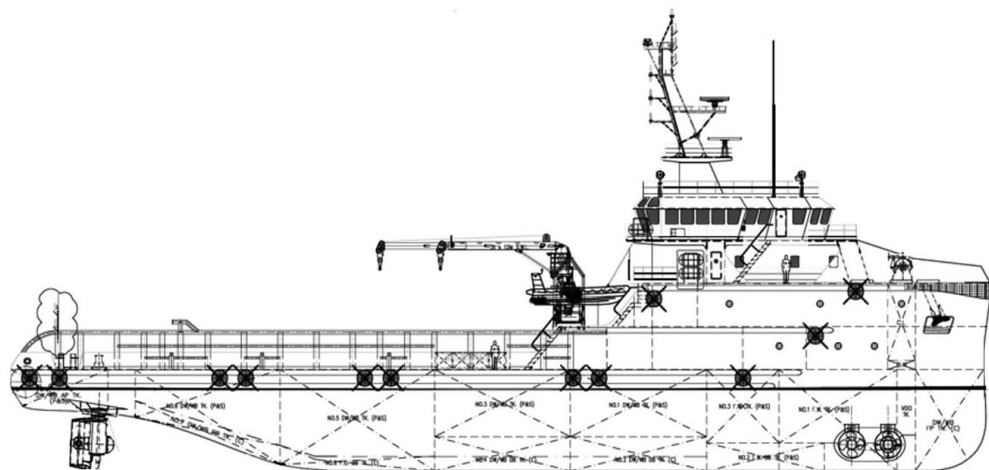


# 65M 4800KW DP-2 ASD Multi-Purpose Offshore Support Vessel



## MAIN PARTICULARS

Length Overall	: 65.00M
Length BP	: 60.39M
Breadth Moulded	: 15.80M
Depth Moulded	: 6.50M
Draft Moulded	: 5.10M
Deadweight	: 1700 T
Gross Tonnage	: 2044 T
Bollard Pull	: ~ 80 T
Net Tonnage	: 583 T
Trial Speed	: ~13.0 knots
Class Notation	: ABS + A1 (E), Offshore Support Vessel (AH, TOW, Supply, FFV 1, OSR-C2, SPS) + AMS + DPS-2, SPS

## PROPULSION /MACHINERY

Main Engine	: 2 X 2400KW @ Mak 8M25C
Rudder Propeller	: 2 X Berg CP Azimuth Thruster
Bow Thruster	: 2 x 12.0T Kawasaki, CPP type
Main Generator	: 3 x 450 eKW, Caterpillar, 415V/3pH/50Hz
Shaft Generator	: 2 x 1230 eKW, PTO driven, 415V/3pH/50Hz
Emergency Diesel Generator	: 1 x 136 eKW, Caterpillar

## ACCOMMODATION

6 x 1 man cabin	: 6 men
4 x 2 men cabin	: 8 men
8 x 4 men cabin	: 32 men
Total	: 46 men
Hospital	: 1 man
Chiller & Freezer	: ~20M³
Provision store	: 25 days

## CARGO CAPACITIES

Clear Deck Area	: 450 M²
Deck Loading	: 7.0 T/M²
Fuel Oil	: ~580 M³
Fresh Water	: ~375 M³
Drill Water / Water Ballast	: ~820 M³
Liquid Mud (with Agitators)	: ~400 M³
Cement Tank	: 4 x (1500ft³) 2.5 M³

## CARGO DELIVERY RATES

Fuel Oil Cargo	: 2 x 150 M³/hr @ 75M head
Fresh Water	: 1 x 100 M³/hr @ 75M head
Drill Water	: 1 x 100 M³/hr @ 75M head
Liquid Mud	: 2 x 75 M³/hr @ 75M head

## SUPPLY & DRAINAGE PLANT

Freshwater Maker	: 1 x reverse osmosis type, 5 T/day
Sewage Holding & Treatment System	: For 46 persons
Oily Bilge Water Separator	: 1 x 1.0 M³/hr with oil content <15ppm
F.W. Hydrophore Plant	: 2 x 4M³/hr @ 35M head
S.W Hydrophore Plant	: 2 x 4M³/hr @ 35M head
Central Water Heating System	: 1 set c/w 300L tank

## DECK / AHT EQUIPMENT

Windlass	: 1 x electro-hydraulic type, 10T @ 12M/min for 40mm dia. Chain
Capstan	: 2 x electro-hydraulic type, 5T @ 15M/min
Towing & Anchor Handling winch	: 1 x electro-hydraulic driven, waterfall type, c/w spooling device for towing winch Pull: 150T of 1 <sup>st</sup> layer Brake holding: 250 T

Drum capacity: 1000mm x 58mm wire rope

## LIFE SAVING EQUIPMENT

Life Raft	: 6 x 25
FRP Rescue Boat c/w Davit	: 1 x 6 men
Life Buoy-ring	: 8 sets
First Aid Kit	: 1 set
Lifejacket	: 60 sets
Immersion suits	: 52 sets
EEBD	: 6 + 1 sets

## NAVIGATION COMMUNICATION EQUIPMENT

X-band Radar Range 96NM	: 1 set
S-band Radar Range 96NM	: 1 set
Echo Sounder	: 1 set
GPS Plotter	: 1 set
Gyro Compass	: 1 set
Magnetic Compass	: 1 set
Autopilot & Steering Gear	: 1 set
Weather Facsimile receiver	: 1 set
Doppler Speed Log	: 1 set
Automatic Identification System (GMDSS)	: 1 set
MF/HF Transceiver (GMDSS)	: 1 set
Satellite EPIRB	: 1 set
2-way Portable VHF radios	: 3 sets
SART	: 2 sets
Navtex Receiver (GMDSS)	: 1 set
Anemometer	: 1 set
BNWAS	: 1 set

## DYNAMIC POSITIONING SYSTEM

Meets the DPS-2 class notation of ABS to be configured or incorporated with:

- 2 x independent joystick control
- 2 x DP control computers
- 2 x DGPS position reference sensor
- 1 x laser reference system sensor
- 2 x wind sensors
- 3 x gyro compass
- 2 x vertical reference unit
- 2 x UPS
- 2 x printer for alarm data log

Towing pins	: 2 x vertical hydraulic retractable type @ 200 T SWL
Karmfork	: 1 x hydraulic retractable type @ 200T SWL
Tugger Winch	: 2 x electro-hydraulic type, 10T @ 15M/min
Stern Roller	: 5.00M by 1.8M dia, 200MT SWL
Storage Reel	: 1 x hydraulic type, 5T @ 15M/min, with Drum capacity of 58mm dia. x 1000M
Anchor	: 2 x 1305kg high holding anchors
Deck Crane	: 1 x marine crane of 3T @ 12.0M

## EXTERNAL FIRE FIGHTING SYSTEM

External Fi-Fi	: Class 1 c/w fixed water spray system
Fire Monitor	: 2 x 1200 M <sup>3</sup> /hr
Fire Pump	: 2 x 1400 M <sup>3</sup> /hr @ 12 bar
Foam System	: 15M <sup>3</sup> tank capacity
Dispersion	: 13M <sup>3</sup> tank capacity
Sea Chest	: 2 x independent
Water Spray System	

## INTERNAL FIRE FIGHTING SYSTEM

CO <sub>2</sub> Fixed Fire Fighting System	: Provided in engine room
Fire Detection & Alarm System	: Shipset
B.A. Recharging Compressor	: Shipset
Portable Fire Extinguishers	
Fire Blanket	: 2 sets
Fire Axe	: 1 unit
Fireman's Outfits	: 6 units

## FORECASTLE DECK PLAN



## UPPER FORECASTLE DECK PLAN

