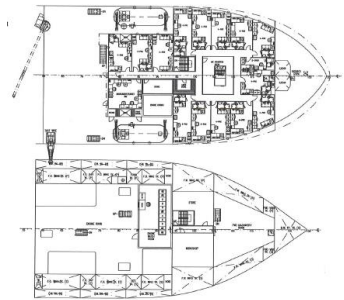
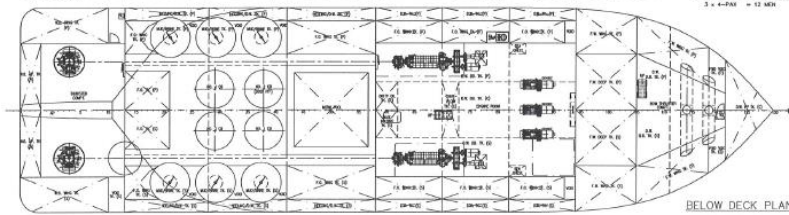
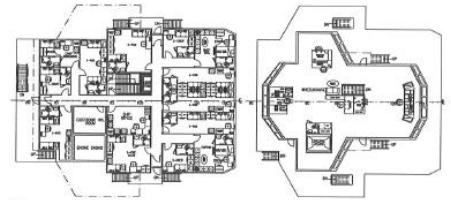
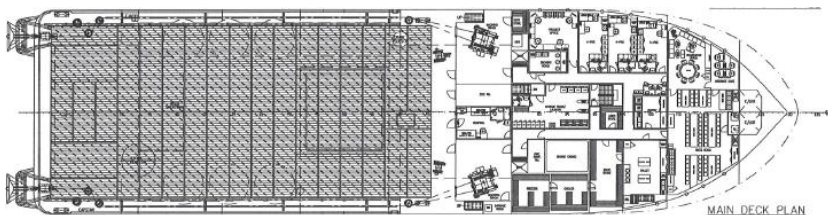
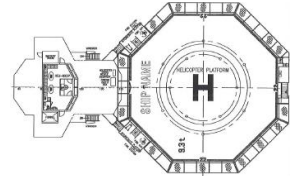
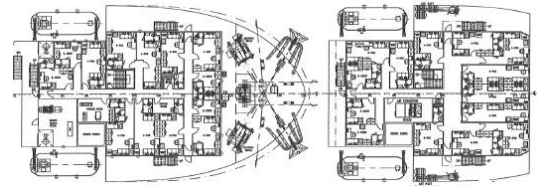
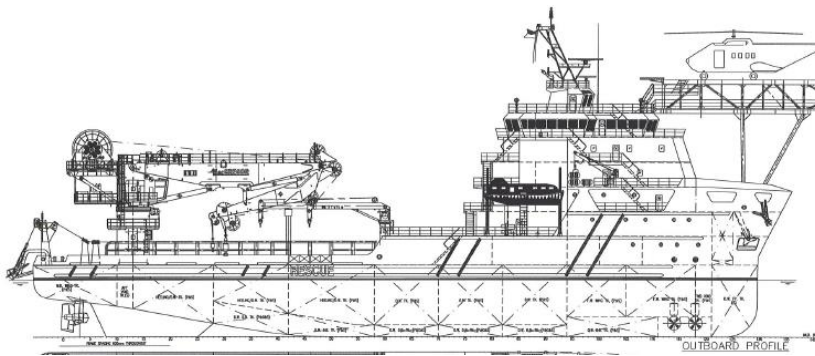


85M 6000BHP DP-2 Subsea Support/Maintenance Vessel



PRINCIPAL PARTICULARS

Length Overall	: 85.00M
Length BP	: 77.75M
Breadth Moulded	: 22.00M
Depth Moulded	: 8.00M
Draft Moulded	: 6.30M
Deadweight	: 3100T (approx.)
Gross Tonnage	: 4671T (approx.)
Trial Speed	: 12.5 knots (approx.)
Moon Pool	: 8.0m x 8.0m
Heli-Deck	: capable of the reception of a Sikorsky S61
Class Notation	: ABS + A1 (E) OFFSHORE SUPPORT VESSEL(Supply-HNLS,FFV1), + AMS+ACCU+DPS-2, SPS, RW, HELIDK.

CARGO CAPACITY

Deck Cargo	:	800t
Clear Deck Area	:	730M ²
Deck Loading	:	7.5t / M ²
Fuel oil	:	~1100M ³
Fresh water	:	~ 750M ³
Drill water/ Water Ballast	:	~1750M ³
Mud	:	~ 415M ³
Heeling	:	~ 450M ³
Dry Bulk Cement (4 x 2000ft ³)	:	~ 226M ³

DISCHARGE RATES

Fuel oil	:	2 x 150M ³ /hr @ 75M head
Fresh water	:	1 x 150M ³ /hr @ 75M head
Drill water	:	1 x 150M ³ /hr @ 75M head
Mud	:	2 x 70M ³ /hr @ 85M head

MACHINERY/PROPULSION

Main engine	: 2 x 3000bhp@800rpm Niigata 6L28AH
Propulsion system	: 2 x Azimuth thruster
Bow thruster	: 2 x 800kW transverse type Kawasaki of approx. 12t thrust
Main generator	: 3 x 800kW diesel driven Caterpillar
Shaft generator	: 2 x 1500kW shaft Alternator
Emergency diesel generator	: 1 x 192kW Cummins

SUPPLY & DRAINAGE PLANT

Freshwater hydrophore plant	:	1 x 15M ³ /hr @ 60M head
Seawater hydrophore plant	:	1 x 15M ³ /hr @ 60M head
Hydrophore plant standby plant	:	1 x 15kW @ 2950rpm
Freshwater maker	:	2 x reverse osmosis type of 30 t/day
Sewage holding & treatment system	:	for 200 persons
Oily bilge water separator	:	1 x 1.0M ³ /hr with oil content less than 15 ppm
Hot water calorifier	:	2 x 80kW of 1000L c/w 2 circulating pump

EXTERNAL FIRE FIGHTING SYSTEM

External FiFi-1 c/w water spray	
Fire monitor	: 2 x 1200M ³ /hr
Fire pumps	: 2 x 2000M ³ /hr @ 14 bar
Independent sea chest	: 2 sets
Foam tank capacity	: 20M ³
Dispersant capacity	: 20M ³

INTERNAL FIRE FIGHTING SYSTEM

CO₂ system in engine room
Fire/smoke detection and alarm system
Portable Fire Extinguishers
Fixed pressure water-spraying & water-mist fire extinguishing system in engine room

DYNAMIC POSITIONING SYSTEM

Meets the DPS-2 class notation of ABS

- 1 x DGPS
- 1 x Laser Reference System
- 1 x HIPAP 500 Position Reference System
- 3 x wind sensor
- 3 x vertical reference system
- 3 x gyro sensors
- 2 x UPS
- 1 x lightweight taut wire (500M)

NAVIGATION EQUIPMENT

X-band radar range 96NM	:	1 set
S-band radar range 96NM	:	1 set
Eco sounder	:	1 set
GPS plotter	:	1 set
Gyro compass	:	3 sets
Magnetic compass	:	1 set
Autopilot & steering gear	:	1 set
Weather facsimile receiver	:	1 set
Doppler speed log	:	1 set
AIS	:	1 set
MF/HF Transceiver (GMDSS)	:	1 set
Satellite EPIRB (GMDSS)	:	1 set
2-way portable VHF radios (GMDSS)	:	3 sets
SART	:	2 sets
Navtex Receiver (GMDSS)	:	1 set
Anemometer	:	3 sets

LIFE SAVING EQUIPMENT

Life raft	:	8 x 25 men
Life buoy-ring	:	12 sets
Lifejackets	:	250 sets
Fireman Outfit	:	6 sets
EEBD	:	8 sets
First aid kit	:	1 set
Lifeboat c/w davit	:	2 sets (SOLAS approved)
Immersion suits	:	204 units
Air breathing apparatus	:	4 sets

ACCOMMODATION

4 x 1 man cabin	:	4 men
10 x 2 men cabins	:	20 men
44 x 4 men cabin	:	176 men
Total	:	200 men
1 x hospital	:	2 men
Chiller	:	35m ³ (approx.)
Freezer	:	35m ³ (approx.)
Provision Store	:	50M ³

DECK/AHL EQUIPMENT

Windlass	:	1 x electro hydraulic type of 16 t @ 12M/min for 58mm dia. chain
Capstan	:	2 x electro hydraulic type of 10 t @ 15M/min
Anchor	:	2 x high-hold type, stowed in anchor-pockets each of 3240kg
Tugger winch	:	2 x electro-hydraulic type of 10 t @ 15M/min
Crash/ Cargo Rail	:	300mm N.B. heavy pipes shall be provided on main deck (P&S) be approx. 2500mm to top of pipes
Main crane	:	1 x electro hydraulic driven crane of 100t with AHC function
Deck crane	:	1 x marine crane of 3 t S.W.L @ 14.0M
Gangway	:	1 x aluminium gangway about 6.0 metre length
Mooring System	:	4 point mooring system

