



**INTERNATIONAL ASSOCIATION OF DRILLING CONTRACTORS**

**STANDARD FORMAT EQUIPMENT LIST**  
**CP-300 SELF-ELEVATING DRILLING UNIT**



INTERNATIONAL ASSOCIATION OF DRILLING CONTRACTORS

STANDARD FORMAT EQUIPMENT LIST  
CP-300 SELF-ELEVATING DRILLING UNIT

TABLE OF CONTENTS

<b>A. UNIT SPECIFICATIONS</b> .....	<b>3</b>
<b>A.1 MAIN DIMENSIONS / TECHNICAL DESCRIPTION</b> .....	<b>3</b>
<b>A.2 STORAGE CAPACITIES</b> .....	<b>4</b>
<b>A.3 JACKUP SYSTEMS</b> .....	<b>4</b>
<b>A.4 OPERATIONAL CAPABILITIES</b> .....	<b>6</b>
<b>A.5 VARIABLE LOAD CAPACITY (VL)</b> .....	<b>6</b>
<b>A.6 ENVIRONMENTAL LIMITS</b> .....	<b>6</b>
<b>A.7 MOORING SYSTEM</b> .....	<b>8</b>
<b>A.8 MARINE LOADING HOSES</b> .....	<b>8</b>
<b>A.9 CRANES, HOIST, AND MATERIAL HANDLING</b> .....	<b>10</b>
<b>A.10 HELICOPTER LANDING DECK</b> .....	<b>13</b>
<b>A.11 AUXILIARY EQUIPMENT</b> .....	<b>13</b>
<b>B. GENERAL RIG SPECIFICATIONS</b> .....	<b>15</b>
<b>B.1 DERRICK AND SUBSTRUCTURE</b> .....	<b>15</b>
<b>B.2 DRAWWORKS AND ASSOCIATED EQUIPMENT</b> .....	<b>16</b>
<b>B.3 DERRICK HOISTING EQUIPMENT</b> .....	<b>17</b>
<b>B.4 ROTATING SYSTEM</b> .....	<b>18</b>
<b>C. POWER SUPPLY SYSTEMS</b> .....	<b>20</b>
<b>C.1 RIG POWER PLANT</b> .....	<b>20</b>
<b>C.2 EMERGENCY GENERATOR</b> .....	<b>23</b>
<b>D. DRILLSTRING EQUIPMENTS. WELL CONTROL</b> .....	<b>24</b>
<b>D.1 TUBULARS (ACCORDING TO COMPANY REQUIREMENT)</b> .....	<b>24</b>
<b>D.2 HANDLING TOOLS</b> .....	<b>32</b>
<b>D.3 FISHING EQUIPMENT</b> .....	<b>36</b>
<b>E. WELL CONTROL</b> .....	<b>39</b>
<b>E.1 DIVERTER</b> .....	<b>39</b>
<b>E.2 HIGH PRESSURE BLOWOUT PREVENTERS</b> .....	<b>40</b>
<b>E.3 LOW PRESSURE BLOWOUT PREVENTERS</b> .....	<b>41</b>
<b>E.4 OTHER BLOWOUT PREVENTERS</b> .....	<b>43</b>
<b>E.5 BOP CONTROL SYSTEM</b> .....	<b>44</b>
<b>E.6 CHOKE MANIFOLD</b> .....	<b>45</b>
<b>E.7 FLEXIBLE CHOKE &amp; KILL LINES</b> .....	<b>46</b>
<b>E.8 FLEXIBLE BOP CONTROL HOSES</b> .....	<b>46</b>
<b>E.9 BOP TESTING EQUIPMENT</b> .....	<b>46</b>
<b>E.10 BOP HANDLING</b> .....	<b>46</b>

<b>F.</b>	<b>MUD SYSTEM/BULK SYSTEM.....</b>	<b>47</b>
	F.1 HIGH PRESSURE MUD SYSTEM.....	47
	F.2 LOW PRESSURE MUD SYSTEM.....	49
	F.3 BULK SYSTEM.....	52
<b>G.</b>	<b>CASING/CEMENTING EQUIPMENT.....</b>	<b>54</b>
	G.1 CASING EQUIPMENT.....	54
	G.2 CEMENTING EQUIPMENT.....	57
<b>H.</b>	<b>INSTRUMENTATION/COMMUNICATION.....</b>	<b>59</b>
	H.1 DRILLING INSTRUMENTATION AT DRILLER'S POSITION.....	59
	H.2 DRILLING PARAMETER RECORDER.....	61
	H.3 INSTRUMENTATION AT CHOKE MANIFOLD.....	61
	H.4 INSTRUMENTATION AT STANDPIPE.....	62
	H.5 DEVIATION EQUIPMENT.....	62
	H.6 RIG COMMUNICATION SYSTEMS.....	62
	H.7 ENVIRONMENTAL INSTRUMENTATION.....	63
	H.8 NAVIGATION INSTRUMENTATION.....	64
	H.9 EXTERNAL COMMUNICATIONS EQUIPMENT.....	64
<b>I.</b>	<b>PRODUCTION TEST EQUIPMENT.....</b>	<b>67</b>
	I.1 BURNERS.....	67
	I.2 BURNER BOOMS.....	67
	I.3 PIPING ON BURNER BOOMS.....	67
	I.4 SPRINKLER SYSTEM.....	68
	I.5 FIXED PIPING FOR WELL TESTING.....	68
	I.6 AUXILIARY POWER AVAILABILITY.....	69
<b>J.</b>	<b>WORKOVER TOOLS</b>	<b>NONE..... 70</b>
<b>K.</b>	<b>ACCOMMODATION SAFETY EQUIPMENT.....</b>	<b>71</b>
	K.1 OFFICES.....	71
	K.2 LIVING QUARTERS.....	71
<b>L.</b>	<b>SAFETY EQUIPMENT.....</b>	<b>73</b>
	L.1 GENERAL SAFETY EQUIPMENT.....	73
	L.2 GAS/FIRE/SMOKE DETECTION.....	74
	L.3 FIRE FIGHTING EQUIPMENT.....	75
	L.4 BREATHING APPARATUS.....	77
	L.5 EMERGENCY FIRST AID EQUIPMENT.....	78
	L.6 HELIDECK RESCUE EQUIPMENT.....	79
	L.7 EMERGENCY WARNING ALARMS.....	79
	L.8 SURVIVAL EQUIPMENT.....	79
<b>M.</b>	<b>POLLUTION PREVENTION EQUIPMENT.....</b>	<b>81</b>
	M.1. SEWAGE TREATMENT.....	81
	M.2 GARBAGE COMPACTION.....	81
	M.3 GARBAGE DISPOSAL/GRINDER.....	81
	M.4 INCINERATOR.....	81
	M.5 OILY WATER SEPARATOR.....	81
<b>N.</b>	<b>DRILLING DATA EQUIPMENT.....</b>	<b>82</b>
	N.1. COMPUTERS (HARDWARE & SOFTWARE).....	82
<b>O.</b>	<b>DRAWINGS.....</b>	<b>84</b>
	O.1. REFERENCES.....	84



# IADC Specification

## CP-300 SELF-ELEVATING DRILLING UNIT

### A. UNIT SPECIFICATIONS

Rig type:	CP-300-1 Jack Up/Self-elevating Drilling Unit
Unit/Design/Shape:	
Unit flag:	-
Unit classification:	★CSA Self-elevating Drilling Unit, HELDK
IMO Certification:	yes/no
Which code version:	Yes
Year of Construction:	IMO, MODU, SOLAS, MARPOL
Construction Yard:	2012

#### A.1 MAIN DIMENSIONS / TECHNICAL DESCRIPTION

Light ship:	Kips/mt	18960/8600
Displacement at load line:	Kips/mt	24319/11031
Hull length	ft / m	200ft /60.96m
Hull width	ft / m	183ft /55.78m
Hull depth	ft / m	25 ft / 7.62 m
Number of legs/length:	no. x ft / m	3 x 411 ft / 125.30 m (incl. Spud can)
Leg length available below hull:	Ft	357 ft / 108.9 m
Type of leg:		"K" type Triangular truss
Thickness of rack plate	in	5 in upper part, 6 in lower part
Diameter of rack chord	ft/m	-
Distance between rack chord center	ft/m	36.76/9.986
Leg spacing (center to center):		
Transverse:	ft / m	120 ft / 36.60 m
Longitudinal	ft / m	115 ft / 35.05 m
Independent leg or matt:		Independent leg
Spud can diameter:	ft / m	45 ft / 13.8 m
Spud can height:	ft / m	15 ft / 4.57 m
Spud can footing area (Projected)	sq. Ft / m <sup>2</sup>	1436 / 133
Spud can jetting system: Low & High	yes/no	Yes
Bottom jets (low pressure):	yes/no	Yes/12
Top jets (high pressure):	yes/no	Yes/6
Mat dimensions:		No
Length:	Ft	-
Width:	Ft	-
Depth:	Ft	-
Cantilever or slot:		Cantilever
Skid-off:	yes/no	Yes
Main dimension (LxBxH):	m	39.4x18.28x5.485
<b>Cantilever envelope:</b>		
Reach AFT, from / to:	ft / ft	0 ft/ 50 ft
Transverse, port/stbd:	ft / ft	15 ft/ 15ft
Total envelope	ft / ft	50 / 30
Slot dimensions:		No
Length:	Ft	-
Width:	Ft	-
Mat slot dimensions:		
Length:	Ft	-
Width:	Ft	-
Max. cantilever load (combined):	kips (mt)	2200 / 1000
Extending distance 34ft:	mt	Center 1000, port/starboard 726



# IADC Specification

## CP-300 SELF-ELEVATING DRILLING UNIT

Extending distance 50ft:	mt	Center 771, port/starboard 295
Max. hook load:	kips / mt	1500 / 675
Max. rotary load:	kips / mt	1500 / 675
Max. setback load:	kips / mt	750 / 325
Fuel Consumption (avg. drilling):	bbl/day	9.6m <sup>3</sup> / 24h 60.3bbl / day
Accommodation for max. # of personnel:(See K.2.1):	no.	105

### A.2 STORAGE CAPACITIES

Installed with Tank gauging systems for:

Fuel:	bbl/m <sup>3</sup>	3774/600
Sea ballast water	bbl/m <sup>3</sup>	41592/6612.3
Sea ballast water/Cooling water	bbl/m <sup>3</sup>	1984/315.5
Sea ballast water/ Drilling water:	bbl/m <sup>3</sup>	4111/653.5
Drilling water:	bbl/m <sup>3</sup>	2494/396.5
Potable water:	bbl/m <sup>3</sup>	2390/380
Mud processing tank (see F.2):	bbl / m <sup>3</sup>	390/62
Active liquid mud (see F.2):	bbl / m <sup>3</sup>	3774 / 600
Independent oil base mud storage:	bbl / m <sup>3</sup>	-
Agitated:	yes/no	No
Independent base oil storage:	bbl / m <sup>3</sup>	660/105
Independent brine storage:	bbl / m <sup>3</sup>	660/105
Heavy brine accepted (e.g. bromide):	yes/no	No
Bulk bentonite/barite: (see F.3)	bbl / m <sup>3</sup>	855/136
Bulk cement: (see F.3)	bbl / m <sup>3</sup>	1258/200
Sack storage:	Sacks	5,000 sacks
Pipe rack:		
Upper racks dimensions:	ft x ft	2 x24x65.5
Maximum load capacity:	kips / mt	600 / 272
Lower rack dimensions:	ft x ft	48 x31.5
Maximum load capacity:	kips / mt	816 / 370
Miscellaneous storage area:	ft <sup>2</sup> / m <sup>2</sup>	-
Operator storage area:	ft <sup>2</sup> / m <sup>2</sup>	Included in above area
Effective deck area:	ft <sup>2</sup> /m <sup>2</sup>	22250/2067
Line log location:	Yes/no	Yes, above living quarter
Mud log location:	Yes/no	yes
Preload capacity (Required):	Kips/mt	6473 (elevated lightship, excluding legs & spud can)
	Kips/mt	2130 (leg and spud can)
	Kips/mt	2380 (variable load)
	Kips/mt	N/A (combined load)
	Kips/mt	6100 (required preload)
	Kips/mt (total)	17083
Preloading Bearing:	Mt/m <sup>2</sup>	42.8
Time to fill and dump preload:	Hrs	7+2

### A.3 JACKUP SYSTEMS

#### **A.3.1 Jacking and Chocking Systems**

##### **A3.1.1 Jacking system**

Make/type:		NOV-D60H / Electrical
No. -jacks or pinions:	no.	18 jacking pinions / leg
Maximum variable jacking load:	Mt	200 mt per pinion
Maximum static holding load:	Mt	318 mt per pinion
Maximum storm holding load:	Mt	454 mt per pinion



## IADC Specification

### CP-300 SELF-ELEVATING DRILLING UNIT

---

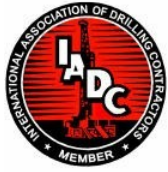
Jacking speed:	m/min	0.45m/min
Rack chocks available:	yes/no	Yes
Required for field tow:	yes/no	N/A
Required for ocean tow:	yes/no	N/A

#### A3.1.2 Rack Chock System

Quantity of rack chock unit:	no.	9
Type		Hydraulic
Rated holding load per unit	mt	4200

#### A.3.2 Raw Water Systems

Quantity:	no.	3
Pump location (water tower or leg):		leg
Suction distance below hull (max):	ft / m	104 ft /31.5 m
Make/Type:		Runjin /Submerged type
Capacity(each):	gal/min	1650gal/min
@ pressure:	Psi	84 psi
Horsepower(each):	Hp	190 hp
Dedicated preload pumps:		No
Quantity:	no.	
Make/Type:		
Capacity:	bbl/min	
@ pressure:	Psi	
Horsepower:	Hp	



# IADC Specification

## CP-300 SELF-ELEVATING DRILLING UNIT

### A.4 OPERATIONAL CAPABILITIES

Maximum design water depth capability:	ft / m	300 / 91.44
Outfitted max/min water depth capability:	Ft	300/21
Normal minimum water depth capability:	Ft	21
Draft at load line (deepest):	Ft/m	15.81/4.82
Draft of light ship	ft/m	12.04/3.67
Drilling depth capability (rated):	Ft/m	30,000/9000
Transit speed towed (historical avg.):	Knots	6 max.
Leg (spud can) below hull in transit (Field Move):	Ft	Flush (Fully retracted)
Towing resistance	mt	144 (wind 20m/s, wave 5m, current 1kn, transit speed 6kn)
Maximum leg length permitted in tow:		-
Ocean tow (Wet):	Ft	352 (fully raised, at storm survival condition) 411 (fully raised, at limited condition)
Field tow:	Ft	411 (fully raised)
Bridge wire diameter	mm	76mm
Number of tugs for field tow:	no.	-
Associated minimum bollard pull per tug:	St	-
Anti-roll system:	yes/no	No
Maximum preload reaction:	Kips	-
Bearing pressure at maximum preload:	lb/ft <sup>2</sup>	-
Thrusters:	yes/no	No
Quantity:	no.	-
Fixed/Azimuthing		-
Total horsepower per thruster:	Hp	-

### A.5 VARIABLE LOAD CAPACITY (VL)

(inclusive of drilling loads)

Transit VL capacity:	Mt	2380 MAX.
Drilling VL capacity:	Mt	3500 MAX.
Survival VL capacity:	Mt	2380 MAX.
Jacking VL capacity:	Mt	2380 MAX.

### A.6 ENVIRONMENTAL LIMITS

Jacking and Preload Condition

Max. wave height:	Ft	6
Max. wave period:	Sec	5
Max. wind velocity	Knots / m/sec	25.0 / 12.9
Max. current velocity:	Knots / m/sec	1.5 / 0.7
Max. heave (double amplitude):	Ft	-
Max. pitch (single amplitude):	degrees	6
Max. roll (single amplitude):	degrees	6

Drilling @ 300 ft water depth:

Air gap (below bottom of main hull):	ft / m	50 ft / 15.24 m
Max. wave height:	ft / m	35 / 10.668
Max. wave period:	Sec	13.5
Max. wind velocity:	Knots / m/sec	70 / 36
Max. current velocity:	Knots / m/sec	1.5/0.7
Penetration depth:	ft/m	10/3.05

Drilling @ 250 ft water depth:



## IADC Specification

### CP-300 SELF-ELEVATING DRILLING UNIT

---

Air gap (below bottom of main hull):	ft / m	65 ft / 19.81 m
Max. wave height:	ft / m	38 / 11.582
Max. wave period:	Sec	13.5
Max. wind velocity:	Knots / m/sec	70 / 36
Max. current velocity:	Knots / m/sec	1.5/0.7
Penetration depth:	ft/m	10/3.05
Environment temperature:	°C	0°C~45°C
sea water temperature:	°C	0°C Min.
Structure design temperature	°C	-10





# IADC Specification

## CP-300 SELF-ELEVATING DRILLING UNIT

### A.7 MOORING SYSTEM

#### A.7.1 Anchor Winches

Quantity:	no.	4
Make/model:		BF6D350A6-000SM
Type (electric/hydraulic/diesel):		Electric
Total HP per winch:	KW	75/75/36KW
Rated pull:	Mt	Winch rated pull: 35 t Winch brake capacity: 800KN
Control locations (local/remote/both):		Local wired remote

#### A.7.2 Anchors

Quantity:	no.	4
Make/type:		Delta
Weight :	mt	3.5

#### A.7.3 Anchor Lines

Wire		Yes
Quantity: (installed + spare):	no.	4
Make/type:		Steel Rope
Construction:		6x36IWRC-1870
Diameter:	mm	38
Useful length (nominal):	m	600

#### A.7.4 Towing Gear

Towing bridle size:		φ 78mm /wire
Hook-up system:		Smith type bracket
Rating:	KN	4745 MBL
Spare bridle:	yes/no	yes

#### A.7.5 Supply Vessel Mooring System

System description:		2 ea nylon rope, φ 72mm ,200m/ 3 sets each side
Rating:	KN	724 MBL
Location (port/stbd/both):		Both

### A.8 MARINE LOADING HOSES

Location of loading manifolds (port/stbd/both):	no.	1 Port / 1 Stbd
---	-----	-----------------

#### A.8.1 Potable Water Hoses

Quantity:	no.	1 each side
Size:	in	4
Make/type:		Jingbo
Color coding:	yes/no	Yes
Make/type connection:		Hammer union



# IADC Specification

## CP-300 SELF-ELEVATING DRILLING UNIT

---

### A.8.2 Drilling Water Hose

Quantity:	no.	1 each side
Size:	in	4
Make/type:		Jingbo
Color coding:	yes/no	Yes
Make/type connection:		Hammer union

### A.8.3 Gas/Fuel Oil Hose

Quantity:	no.	1 each side
Size:	in	4
Make/type:		Jingbo
Color coding:	yes/no	Yes
Make/type connection:		Hammer union

### A.8.4 Mud Chemical Hose (barite/bentonite)

Quantity:	no.	1 each side
Size:	in	4
Make/type:		Jingbo
Color coding:	yes/no	Yes
Make/type connection:		Hammer union

### A.8.5 Cement Hose

Quantity:	no.	1 each side
Size:	in	4
Make/type:		Jingbo
Color coding:	yes/no	Yes
Make/type connection:		Hammer union

### A.8.6 Liquid Mud Hose

Quantity:	no.	1 each side
Size:	in	4
Make/type:		Jingbo
Color coding:	yes/no	Yes
Make/type connection:		Hammer union

### A.8.7 Brine Hose

Quantity:	no.	2
Size:	in	4
Make/type:		Jing bo
Color coding:	yes/no	yes
Make/type connection:		Hammer union



# IADC Specification

## CP-300 SELF-ELEVATING DRILLING UNIT

---

### A.8.8 Other

Use:		-
Quantity:	no.	-
Size:	in	-
Make/type:		-
Color coding:	yes/no	-
Make/type connection:		-

Use:		-
Quantity:	no.	-
Size:	in	-
Make/type:		-
Color coding:	yes/no	-
Make/type connection:		-

Use:		-
Quantity:	no.	-
Size:	in	-
Make/type:		-
Color coding:	yes/no	-
Make/type connection:		-

### A.9 CRANES, HOIST, AND MATERIAL HANDLING

#### A.9.1 Cranes, Revolving

Quantity:	no.	2 each
Specification (API, etc.):		Structure: API Spec. 2C Mechanisms: API Spec. 2C
Make:		2 xYQHG2800-50t-8m(10t-36.5m)
Type:		Diesel Hydraulic
Location (frwd/aft/port/stbd):		Port aft / Stbd
Boom length:	m	36.5
Hook reach below main deck (block/whip):	m	20
<b>Block capacities and hoisting speeds:</b>		
Load/radius/speed (minimum radius):	M t / m/ (m/s)	50/8/0.35
Load/radius/speed (maximum radius):	Mt / m/ (m/s)	12/33.5/0.35
Whip capacity and hoist speed:	Mt / (m/s)	10/1.167
Hook load indicator automatically:		Yes
corrected for boom angle:	yes/no	Yes
Alarm (audible, visual, both):		Yes
Automatic brake:	yes/no	Yes
Safety latch on hooks:	yes/no	Yes
Crown saver (limit switch):	yes/no	Yes
Boom illumination:	yes/no	Yes



# IADC Specification

## CP-300 SELF-ELEVATING DRILLING UNIT

### A.9.2 Forklifts

Quantity:	no.	1
Make/type :		Rongde/FB25-MQJZ2
Rated capacity:	Mt	2.5
Explosion proof:	yes/no	YES

### A.9.3 Monorail Overhead Cranes

Quantity:	No.	10
Make:		CNPC
Type:		214FC
Rated Capacity:	St	1 Ton
Location(s):		Main engine room

Quantity:	No.	3
Make:		CNPC
Type:		-
Rated Capacity:	St	2 Ton
Location(s):		Pump room

### A.9.4 Air Hoist/Derrick Winches

#### A.9.4.1 Rig Floor Winches (Non man-riding)

Quantity:	No.	-
Make:		-
Type:		-
Rated capacity:	Lbs	-
Wire diameter:	mm	-
Automatic brakes:	yes/no	-
Overload protection:	yes/no	-
Automatic spooling:	yes/no	-

#### A.9.4.2 Monkey Board Work Winch

Quantity:	No.	2
Make:		JuLing
Type:		JQH-5X48
Rated capacity:	Lbs/MT	1100/0.5
Wire diameter:	mm	8mm
Automatic brakes:	yes/no	no
Overload protection:	yes/no	no
Automatic spooling:	yes/no	no

#### A.9.4.3 Rig Floor "Man-Riding" Winch

Quantity:	No.	3
Make:		
Type:		XJFH-5/35
Rated capacity:	Lbs/MT	11000/5
Wire diameter:	mm	19.5mm
Non-twisted wire:	yes/no	Yes
Automatic brakes:	yes/no	Yes
Overload protection:	yes/no	No
Automatic spooling:	yes/no	Yes



# IADC Specification

## CP-300 SELF-ELEVATING DRILLING UNIT

### A.9.4.4 Utility Winch (i.e. Deck Winch)

Quantity:	no.	3
Make:		Tai An Juling
Type:		JQHS-100X10A
Rated capacity:	mt	10.000
Wire diameter:	mm	28mm
Automatic brakes:	yes/no	Yes
Overload protection:	yes/no	no
Automatic spooling:	yes/no	no
Certified for man-riding:	yes/no	no
Locations:		Starboard/Forward/04 deck

Quantity:	no.	1
Make:		Tai An Juling
Type:		JQHS-50X12A
Rated capacity:	mt	6
Wire diameter:	mm	22mm
Automatic brakes:	yes/no	Yes
Overload protection:	yes/no	no
Automatic spooling:	yes/no	no
Certified for man-riding:	yes/no	no
Locations:		03 deck

Quantity:	no.	1
Make:		Tai An Juling
Type:		JQHS-30X20B
Rated capacity:	Lbs	2.5
Wire diameter:	mm	18 mm
Automatic brakes:	yes/no	No
Overload protection:	yes/no	no
Automatic spooling:	yes/no	no
Certified for man-riding:	yes/no	no
Locations:		03 deck

### A.9.4.5 BOP Hoists (see E.10.1)

#### A.9.5 Transfer Baskets/Containers

**A.9.5.1 Personnel Transfer Baskets** 8 person

**A.9.5.2 Cargo Containers** None

Quantity:	no.	-
Make/type:		-



# IADC Specification

## CP-300 SELF-ELEVATING DRILLING UNIT

### A.10 HELICOPTER LANDING DECK

Location (frwd/aft/port/stbd):		Fwd
Dimensions:	ft / ft	73.66 / 73
Perimeter safety net: Deck	yes/no	Yes
load capacity: Maximum	lb/ft2	4.86 lbs / sq.ft.
helicopter weight: Designed	kips	20.46
for helicopter type: Tie down		Designed for Sikorsky –S61N type helicopter.
points:	yes/no	Yes
Covered by foam fire system (see L.3.6):	yes/no	Yes

#### **A.10.1 Helicopter Refueling System**

None

System make/type:		-
Fuel storage capacity:	gal	-
Jettisonable:	yes/no	-
Fuel transport container, quantity:	no.	-
Volume:	gal	-
Fuel transport containers:	no.	-
Volume:	gal	-
Covered by foam fire system (see L.3.6)	yes/no	-

### A.11 AUXILIARY EQUIPMENT

#### **A.11.1 Water Distillation**

Quantity:	no.	2
Make/type:		Jianghe/ reverse osmosis type
Capacity (each/total):	gal/day	10999 gal/day (each)

#### **A.11.2 Boilers**

None

Quantity:	no.	-
Make/type:		-
Capacity (total system):	lbs/hr	-

#### **A.11.3 Air Conditioning**

Make/type:		Carrier/Chilled water and treated air type(1 set)
Capacity (total system):	tons	fresh air 11240m <sup>3</sup> /h
Max. temperature rating:	F	32-113

Make/type:		Carrier/ sea water cooling type (1 set)
Capacity (total system):	tons	fresh air 3200m <sup>3</sup> /h
Max. temperature rating:	F	32-113

Make/type:		Carrier/ water cooling type(2 set)
Capacity (Total system):		fresh air 5400m <sup>3</sup> /h
Max. temperature rating:		32-113

Make/type:		Carrier/ air cooling type(1 set)
Capacity (Total system):	m <sup>3</sup> /h	fresh air 4200m <sup>3</sup> /h
Max. temperature rating:	F	32-113



## IADC Specification

### CP-300 SELF-ELEVATING DRILLING UNIT

---

#### A.11.4 Electric Welding Sets

Quantity:	no.	2
Current capacity:	amp	400Amp
Make/model:		Jiuchuan / ZX7-400
Welding type		DC current
Type (fixed/portable):		Fixed

#### A.11.5 High Pressure Cleaner

		None
Quantity: Make/type:	no.	-
Electric/pneumatic/diesel:		-
Max delivered pressure:		-
	psi	-
With steam:	yes/no	-



# IADC Specification

## CP-300 SELF-ELEVATING DRILLING UNIT

### **B. GENERAL RIG SPECIFICATIONS**

#### **B.1 DERRICK AND SUBSTRUCTURE**

##### **B.1.1 Derrick / Mast**

Make/type:		CNPC / Bottle type
<b>Rated for wind speed</b>		-
With full set back:	MPH	70
With no set back:	MPH	100
Height:	ft / m	170 / 52
Dimensions of base:	ft x ft / m x m	40 x 35 ft / 12.192 x 10.668 m
Dimensions of crown:	ft x ft	15 X 15
Gross nominal capacity:	Kips / mt	1500/675 with 14 lines
Static hook load	Kips/mt	1500/675 with 14 lines
Maximum number of lines	no.	14
Ladders with safety cages and rests	yes/no	Yes
Platform for crown sheave access	yes/no	Yes
Counter balance, system for rig tongs and pipe spinning tong	yes/no	Yes
Lighting system explosion proof	yes/no	Yes

##### **B.1.2 Racking Platform (Set Back)**

###### **Racking board**

Make/type:		Dreco
Total current simultaneous capacity -drill pipe:		320 stands
Total amount of 5 " DP (using the variable fingers) :		Fixed fingers
5 1/2" DP:	ft	320 stands
6 5/8" DP:	ft	
8 5/8" DC:	ft	8 stand
9 3/4" DC:	ft	6 stand
Total		
Tubing belly board:	yes/no	No

##### **B.1.3 Automated Pipe Handling**

Make/type:		-
Description:		-

##### **B.1.4 Casing Stabbing Basket**

Make/type:		NOV/SAB-90
Adjustable from/to height above rotary:	ft/ft	-





# IADC Specification

## CP-300 SELF-ELEVATING DRILLING UNIT

### B.1.5 Substructure

Make/type:

Drill floor height (above main deck)	Ft/m	34.18
Length	ft	45.9
Width	ft	73.95
Setback capacity	mt	320
Simultaneous setback + hook load capacity	mt	1000
Rotary beam capacity (total)	Kips/ mt	1500/675
Clear height below rotary table beams (to main deck)	ft	28.5

### B.1.6 Weather Proofing

Rig floor windbreaks:	yes/no	yes
Derrickman windbreaks:	yes/no	yes
Around process pits:	yes/no	yes

### B.1.7 Derrick TV Camera System

Camera located at::		Monkey board, Overhead traveling crane
Make/type		ImNet/YH300A
Zoom/Pan/Tilt-function:	yes/no	Yes
Monitor located at:		Driller's console, 03 level Office, Captain room

### B.1.8 Mechanical Mouse Hole

yes/no	yes
--------	-----

## B.2 DRAWWORKS AND ASSOCIATED EQUIPMENT

### B.2.1 Drawworks

Make/type:		JC90DB
Motors make/type:		General Electric 1.000 HP, GE752ARZA
Quantity:	no.	4 sets
Rated input power:	hp	3,912HP
Drum size (diameter x length):	in x in	41 x73
Drum type (grooved/smooth)		Lebus Grooved
For drill line size:		1 3/4"
Brake type (disc/drum)	in	63
Maximum line pull 14 lines:		141/63.8
Maximum line pull 12 lines:		-
Maximum line pull 8 lines: Makeup cathead type:	Kips / mt	
Breakout cathead type:	Kips / mt	
Crown block safety devices:		Yes
Make/type:	Kips / mt	Crown-o-matic
Cooling system type:		Air cooling
Automatic driller:	yes/no	Yes



# IADC Specification

## CP-300 SELF-ELEVATING DRILLING UNIT

---

### B.2.2 Auxiliary Brake

Make:	motor energy-consumption dynamic braking
Model:	
Independent back-up system type:	None

### B.2.3 Sandline

Make:		None
Length capacity:	ft	-
Line size/type:		-
Breaking strength:	st	-
Safe working load:	st	-

### B.2.4 Slick line Unit N/A

Make/model:		-
Wire length (nominal):	ft	-
Wire size:	in	-
Breaking strength:	lbs	-
Safe working load:	lbs	-
Depth counter:	yes/no	-
Pull indicator:	lbs	-

## B.3 DERRICK HOISTING EQUIPMENT

### B.3.1 Crown Block

Make/type:		TC675
Rated capacity:	mt	675mt
No. of sheaves:	no.	8
Sheave diameter:	in	60"
Sheave grooved for line size:	in	1 3/4"

### B.3.2 Traveling Block

Make/type:		YC675
Rated capacity:	mt	675 mt
No. of sheaves:	no.	7
Sheave diameter:	in	60"
Sheave grooved for line size:	in	1 3/4"



# IADC Specification

## CP-300 SELF-ELEVATING DRILLING UNIT

---

### B.3.3 Hook

Make/type:		DG675
Rated capacity:	mt	675 mt
Complete with spring assembly/hook		
Locking device:	yes/no	No, part of top drive

### B.3.4 Swivel

Make/type:		None
Rated capacity:	st	
Test/working pressure:	psi/psi	
Gooseneck and washpipe minimum ID:	in	
Left hand pin connection type:		
Access fitting for wireline entry on Top gooseneck:	yes/no	

### B.3.5 Drilling Line

Diameter:	in	1-3/4"
Construction:		6X21S+IWRC+EIPS
Length (original):	ft	6562
Drilling line reel:		Yes
Drum cover:	yes/no	Yes
Drilling line drum power driven:	yes/no	no
Spare drilling line:	yes/no	Yes
Location (rig, shore, etc.)	yes/no	
Roller guides:	yes/no	Yes

### B.3.6 Dead Line Anchor

Make/type:		JZG72
Weight sensor:	yes/no	Yes

### B.3.7 Block Guidance System

Make/type		CNPC / Double guide
-----------	--	---------------------

## B.4 ROTATING SYSTEM

### B.4.1 Rotating Table

Make/type:		ZP495
Maximum opening:	in	49 1/2"
Rated capacity:	st	675 mt
One speed gearbox:	yes/no	Yes
Emergency gear drive:	yes/no	yes
Driven by an independent electric motor:	yes/no	yes
Electric motor make/type:		YJ 31
Input power:	kw ft/lb	720kw
Maximum continuous torque:	yes/no	47204
Drip pan/mud collection system:		yes



# IADC Specification

## CP-300 SELF-ELEVATING DRILLING UNIT

---

### B.4.2 Master Bushings

Make/type:		BOMCO49.5"
Insert bowls:		API 0,1,2,3
		Casing Bushing: 20"
		Casing Bushing: 26"
		Casing Bushing: 30"

### B.4.3 Kelly Bushing

Make/type:		5 1/4", 3 1/2"
Lock down assembly:	yes/no	NO

### B.4.4 Top Drive

Make:		Varco TDS-8SA
Type (electric/hydraulic):		Electric
Rated capacity:	st	675 mt
Test/working pressure:	psi/psi	10000psi/ 7500 psi
Output power:	hp	1150 HP
Maximum continuous torque:	ft-lbs	62250 ft.-LBS/ 94r/min
One-speed gear box	yes/no	Yes
Maximum rotary speed:	rpm	270
Remote operated kelly cock:	yes/no	Yes
Cooling system type:		Air
Upper inside BOP (see also D.1.15)		
Quantity:	no.	
Make/type:		
Working pressure:	psi	15000
Max. OD body:	in	
Max. ID body:	in	
Connection type (box):		
Connection type (pin):		

#### B.4.4.1 Top Drive Makeup / Breakout System

Make/type:		NOV
Model:		PH100
Max. makeup torque:	ft/lbs	95000
Max. break out torque:	ft/lbs	103000
Raised backup system:	yes/no	no



# IADC Specification

## CP-300 SELF-ELEVATING DRILLING UNIT

### C. POWER SUPPLY SYSTEMS

#### C.1 RIG POWER PLANT

##### C.1.1 Diesel Engines

Quantity:	no.	5
Make/type:		Caterpillar 3516B
Maximum continuous power:	Kw/hp	1600 /2145
At rotation speed of:	rpm	1500
Equipped with spark arrestors:	yes/no	yes
Mufflers installed:	yes/no	Yes
Total fuel consumption, drilling (avg):	bbl/day	60.3bbl / day

##### C.1.2 DC – Generator

None

Quantity:	no.	-
Make/type:		-
Continuous power:	kw	-
At rotation speed of:	rpm	-
Output volts:	volts	-

##### C.1.3 AC – Generator

Quantity:	no.	5
Make/type:		Caterpillar SR4B
Continuous power:	kw	1550 Kw
At rotation speed of:	rpm	1500
Output volts:	volts	600

##### C.1.4 VFD System

Number of VFD:	no.	11
Make/type:		Siemens
Maximum continuous power (total):	kw	800kw×10+1200kw×1=9200kw
Output volts:	volts	690 VAC

##### C.1.5 Transformer System

Quantity:	no.	2
Make/type:		Dry
Continuous power (each):	kva	3500KVA
Output volts:	volts	600/690V
Frequency:	hz	50

Quantity:	no.	2
Make/type:		Dry
Continuous power (each):	kva	2000KVA
Output volts:	volts	600/400V
Frequency:	hz	50

Quantity:	no.	2
Make/type:		Dry
Continuous power (each):	kva	225KVA



## IADC Specification

### CP-300 SELF-ELEVATING DRILLING UNIT

---

Output volts:	volts	400/220V
Frequency:	hz	50
Quantity:	no.	1
Make/type:		Dry
Continuous power (each):	kva	150KVA
Output volts:	volts	400/400/220V
Frequency:	hz	50
Quantity:	no.	1
Make/type:		Dry
Continuous power (each):	kva	75KVA
Output volts:	volts	400/220V
Frequency:	hz	50



# IADC Specification

## CP-300 SELF-ELEVATING DRILLING UNIT

### C.1.6 Emergency Shutdown

Emergency shutdown switches for the complete power system (AC & DC), located at the Following points:

Central Control Room, Drillers Cabin, Entrance Of Switchboards, Main Deck

### C.1.7 Compressed Air Systems

#### Air compressors -Cold Start:

		none
Quantity:	no.	-
Make:		-
Model:		-
Rated capacity:	ft <sup>3</sup> /min	-
Working pressure:	psi	-
Prime mover (electric/diesel):		-
Continuous power:	hp	-

#### Air compressors -Medium Pressure (rig air):

Quantity:	no.	3
Make:		Sullair
Model:		LS20-125HH WC
Rated capacity:	m <sup>3</sup> /min	14.2
Working pressure:	psi	145
Prime mover (electric/diesel):		Electric
Continuous power:	hp	121

Quantity:	no.	-
Make:		-
Model:		-
Rated capacity:	ftA /min	-
Working pressure:	psi	-
Prime mover (electric/diesel):		-
Continuous power:	hp	-

#### Air dryers:

Quantity:	no.	2
Make:		Sullair
Rated capacity:	m <sup>3</sup> /min	30

### C.1.8 Air Receivers

Volume (total):	m <sup>3</sup>	6.8m3
Pressure:	psi	145
Location:		(aux. Eng. Rm)



# IADC Specification

## CP-300 SELF-ELEVATING DRILLING UNIT

---

### C.2.1 Engine

Quantity:	no.	1
Make/type:		Cummins KT38-DM
Maximum output:	kW	560
At rotation speed:	rpm	1500
Automatic starting:	yes/no	Yes
Starting methods (air, hydraulic,, battery):		Hydraulic & Battery
Max. angle of operation:	degrees	-

### C.2.2 AC -Generator

Quantity:	no.	1
Make/type:		STAMFORD HCM634G
Maximum output:	kVA	500
At rotation speed:	rpm	1500
Output volts:	volts	400
Capable of back-feeding power to main bus:	yes/no	No. Only to Main switchboard.





# IADC Specification

## CP-300 SELF-ELEVATING DRILLING UNIT

### D. DRILL STRING EQUIPMENT. WELL CONTROL

#### D.1 TUBULARS (According to company requirement)

##### D.1.1 Kelly's

None

Quantity:	no.	-
Nominal size OD:	in	-
Shape type (hexagonal, square, triangular):		-
Total / working length:	ft / ft	-
Connection type:		-

##### D.1.2 Kelly/TDS Saver Subs

Quantity:	no.	As required
Nominal kelly size:	in	-
Connection type:		6 5/8 REG Pin X NC50 Pin
Protector:		-

##### D.1.3 Drill Pipe

Drill pipe OD:	in	-
Grade:		-
Total length:	ft	-
Range:		-
Weight:	lbs/ft	-
Internally plastic coated:	yes/no	-
Tool joint OD/ID:	in/in	-
Tool joint pin length (original):	in	-
Tapered shoulder tool joints (box/pins):	deg./deg.	-
Connection type:		-
Hard facing:		-
API classification:		-
Thread protectors:	yes/no	-
Sour service	yes/no	-
Inspection standard		-

Drill pipe OD:	in	-
Grade:		-
Total length:	ft	-
Range:		-
Weight:	lbs/ft	-
Internally plastic coated:	yes/no	-
Tool joint OD/ID:	in/in	-
Tool joint pin length (original):	in	-
Tapered shoulder tool joints (box/pins):	deg./deg.	-
Connection type:		-
Hard facing:		-
API classification:		-
Thread protectors:	yes/no	-
Sour service	yes/no	-
Inspection standard		-



# IADC Specification

## CP-300 SELF-ELEVATING DRILLING UNIT

---

### D.1.4 Drill Pipe Pup Joints

Tool joint OD/ID:	in/in	-
Grade:		-
Length:	ft	-
Quantity:	no.	-
Length:	ft	-
Quantity:	no.	-
Length:	ft	-
Quantity:	no.	-
Length:	ft	-
Quantity:	no.	-
Weight:	lbs/ft	-
Connection type:		-
Internally plastic coated:	yes/no	-
API Classification:		-
Thread protectors:	yes/no	-

### D.1.5 Drill Pipe Casing Protectors

None

Initial stock:	no.	-
Make/type:		-
OD:	in	-
Installation tools (manual/hydraulic/none):		-

### D.1.6 Heavy Wate Drill Pipe

Quantity:	no.	-
Nominal size OD:	in	-
Weight:	lbs/ft	-
Range:		-
Tool joint OD / ID: Type of hardfacing: Internally plastic coated:	in/in	-
Connection type:	yes/no	-
Thread protectors:	yes/no	-
Quantity:	no.	-
Nominal size OD:	in	-
Weight:	lbs/ft	-
Range:		-
Tool joint OD / ID: Type of hardfacing: Internally plastic coated:	in/in	-
Connection type:	yes/no	-
Thread protectors:	yes/no	-



# IADC Specification

## CP-300 SELF-ELEVATING DRILLING UNIT

---

### D.1.7 Drill Collars

Quantity:	no.	-
OD body:	in	-
ID body:	in	-
Nominal length of each joint:	ft	-
Drill collar body (slick/spiral):		-
Recess for "zip" elevator:	yes/no	-
Recess for slips:	yes/no	-
Stress relief pin groove:	yes/no	-
Boreback on box:	yes/no	-
Connection type:		-
Number of lifting subs for 9 1/2" DC	no.	-

Quantity:	no.	-
OD body:	in	-
ID body:	in	-
Nominal length of each joint:	ft	-
Drill collar body (slick/spiral):		-
Recess for "zip" elevator:	yes/no	-
Recess for slips:	yes/no	-
Stress relief pin groove:	yes/no	-
Boreback on box:	yes/no	-
Connection type:		-
Number of lifting subs for 8 1/4" DC		-

Quantity:	no.	-
OD body:	in	-
ID body:	in	-
Nominal length of each joint:	ft	-
Drill collar body (slick/spiral):		-
Recess for "zip" elevator:	yes/no	-
Recess for slips:	yes/no	-
Stress relief pin groove:	yes/no	-
Boreback on box:	yes/no	-
Connection type:		-
Number of lifting subs for 6 1/2 " DC		-

Quantity:	no.	-
OD body:	in	-
ID body:	in	-
Nominal length of each joint:	ft	-
Drill collar body (slick/spiral):		-
Recess for "zip" elevator:	yes/no	-
Recess for slips:	yes/no	-
Stress relief pin groove:	yes/no	-
Boreback on box:	yes/no	-
Connection type:		-
Number of lifting subs for 4 3/4 " DC		-



# IADC Specification

## CP-300 SELF-ELEVATING DRILLING UNIT

---

**D1.8 Short Drill Collars** None

Quantity:		-
OD body:		-
ID body:		-
Nominal length of each joint:		-
Stress relief pin groove:	yes/no	-
Boreback on box:	yes/no	-
Connection type:		-

**D.1.9 Non-Magnetic Drill Collars** None

Quantity:	no.	-
OD body:	in	-
ID body:	in	-
Nominal length of each joint:	ft	-
Drill collar body (slick/spiral):		-
Recess for "zip" elevator:	yes/no	-
Recess for slips:	yes/no	-
Stress relief pin groove:	yes/no	-
Boreback on box:	yes/no	-
Connection type:		-

**D.1.10 Core Barrels** None

Quantity:	no.	-
Make:		-
Model:		-
Size OD x ID:	in x in	-
Length:	ft	-
Top connection type:		-
Spiral stabilizing ribs:	yes/no	-
Subs and handling tools:	yes/no	-

**D.1.11 Stabilizers** None

Hole size:	in	-
Quantity:	no.	-
Make:		-
OD blades:	in	-
Type blades (straight/spiral/welded/integral/sleeve):		-
Type of blade hardfacing:		-
OD body or fishing neck:	in	-
ID body:	in	-
Connection type:		-
Float valve receptacle:	yes/no	-

**D.1.12 Roller Reamers** None

Hole size:	in	-
Quantity:	no.	-



# IADC Specification

## CP-300 SELF-ELEVATING DRILLING UNIT

Make:					-
OD body:	in				-
ID body:	in				-
OD fishing neck:	in				-
Cutters supplied sets:	no.				-
Cutters, type:					-
Connection, type:					-

**D.1.13 Shock Absorbers** None

Quantity:	no.				-
Make/type:					-
OD body:					-
ID body:	in				-
OD fishing neck:	in				-
Connection type	in				-

**D.1.14 Drilling Jars** None

Quantity:	no.				-
Make:					-
Type (mechanical/hydraulic; up/down):					-
OD body:	in				-
Min. ID body:	in				-
OD fishing neck:	in				-
Stroke:	in				-
Connection type:					-

**D.1.15 Inside BOP Valve (see also B.4.4)**

Quantity:	no.				-
Make / Type:					-
OD:	in				-
Min. ID:	in				-
Connection type:	psi				-
Working pressure:					-

**D.1.16 Fast Shut-Off Coupling** None

Make/type:					-
Quantity:	no.				-
Size tool joint to fit:					-

**D.1.17 Circulation Head**

Quantity:	no.				-
Make/type:					-
Bottom connection type:					-
Top connection type:					-
Wireline stripper:	yes/no				-
Working pressure:	psi				-



# IADC Specification

## CP-300 SELF-ELEVATING DRILLING UNIT

---

<b>D.1.18 Kelly Cocks</b>		None
Upper:		-
Quantity:	no.	-
Make/type:		-
Working pressure:	psi	-
Max. OD body:	in	-
Min. ID body:	in	-
Connection type:		-
Lower:		-
Quantity:	no.	-
Make/type:		-
Working pressure:	psi	-
Max. OD body:	in	-
Min. ID body:	in	-
Connection type:		-
Used as full open safety valve:	yes/no	-
<b>D.1.19 Circulation Sub</b>		None
Quantity:	no.	-
Make/type:		-
OD body:	in	-
Ball size:	in	-
Dressing kits:	no.	-
Connection type:		-
<b>D.1.20 Cup Type Testers</b>		
Quantity:	no.	-
Make:		-
Size:	in	-
test cup for casing weight:	lb/ft	-
test cup for casing weight:	lb/ft	-
test cup for casing weight:	lb/ft	-
Connection type:		-
<b>D.1.21 Plug Type Testers</b>		
Quantity:	no.	-
Make:		-
Size test plugs:	in	-
Connection type:		-
<b>D.1.22 Drop-In Valves</b>		None
Quantity:	no.	-
For nom. OD drillpipe:	in	-
Make/type:		-
Max. OD of dart.:	in	-



# IADC Specification

## CP-300 SELF-ELEVATING DRILLING UNIT

---

<b>D.1.23 Float Valves</b>		None
Quantity of float valves:	no.	-
Make / Type:		-
OD size:	in	-
Quantity of float Subs:		-
ID size:	in	-
Top connection type:		-
Bottom connection type:		-
Bored for float valve:	yes/no	-
Float size:	in	-
<b>D.1.24 Crossover Subs</b>		
Quantity:	no.	-
OD size (max/min):	in/in	-
ID size:	in	-
Top connection size:		-
Type (pin/box):		-
Bottom connection size:		-
Type (pin/box):		-
Quantity:	no.	-
OD size (max/min):	in/in	-
ID size:	in	-
Top connection size:		-
Type (pin/box):		-
Bottom connection size:		-
Type (pin/box):		-
Quantity:	no.	-
OD size (max/min):	in/in	-
ID size:	in	-
Top connection size:		-
Type (pin/box):		-
Bottom connection size:		-
Type (pin/box):		-
Quantity:	no.	-
OD size (max/min):	in/in	-
ID size:	in	-
Top connection size:		-
Type (pin/box):		-
Bottom connection size:		-
Type (pin/box):		-
Quantity:	no.	-
OD size (max/min):	in/in	-
ID size:	in	-
Top connection size:		-
Type (pin/box):		-
Bottom connection size:		-



# IADC Specification

## CP-300 SELF-ELEVATING DRILLING UNIT

Type (pin/box):		-
Quantity:	no.	-
OD size (max/min):	in/in	-
ID size:	in	-
Top connection size:		-
Type (pin/box):		-
Bottom connection size:		-
Type (pin/box):		-
Quantity:	no.	-
OD size (max/min):	in/in	-
ID size:	in	-
Top connection size:		-
Type (pin/box):		-
Bottom connection size:		-
Type (pin/box):		-
Quantity:	no.	-
OD size (max/min):	in/in	-
ID size:	in	-
Top connection size:		-
Type (pin/box):		-
Bottom connection size:		-
Type (pin/box):		-
Quantity:	no.	-
OD size (max/min):	in/in	-
ID size:	in	-
Top connection size:		-
Type (pin/box):		-
Bottom connection size:		-
Type (pin/box):		-
Quantity:	no.	-
OD size (max/min):	in/in	-
ID size:	in	-
Top connection size:		-
Type (pin/box):		-
Bottom connection size:		-
Type (pin/box):		-
<b>D.1.25 Drilling Bumper Subs</b>		None
Quantity:	no.	-
Make:		-
OD:	in	-
Stroke:	in	-
Connection type:		-
<b>D.1.26 Hole Openers</b>		None -
Quantity:	no.	-
Make:		-
OD:	in	-





# IADC Specification

## CP-300 SELF-ELEVATING DRILLING UNIT

Connection type:		-
<b>D.1.27 Under reamer</b>		None
Quantity:	no.	-
Make/type: type:		-
OD min/OD max:	in/in	-
Connection		-

### D.2 HANDLING TOOLS

#### **D.2.1 Drill Pipe Elevators**

Size:	in	-
Quantity:	no.	-
Make:		-
Model:		-
Rated capacity:	st	-
Size:	in	-
Quantity:	no.	-
Make:		-
Model:		-
Rated capacity:	st	-
Size:	in	-
Quantity:	no.	-
Make:		-
Model:		-
Rated capacity:	st	-

#### **D.2.2 Drill Collar Elevators**

Size:	in	-
Quantity:	no.	-
Make:		-
Model:		-
Rated capacity:	st	-
Size:	in	-
Quantity:	no.	-
Make:		-
Model:		-
Rated capacity:	st	-
Size:	in	-
Quantity:	no.	-
Make:		-
Model:		-
Rated capacity:	st	-
Size:	in	-
Quantity:	no.	-
Make:		-
Model:		-



# IADC Specification

## CP-300 SELF-ELEVATING DRILLING UNIT

Rated capacity: st -

**D.2.3 Tubing Elevators** None

Size (max/min): in/in -

Quantity: no. -

Make: -

Model: -

Rated capacity: st -

**D.2.4 Drill Pipe Hand Slips**

Size: in -

Quantity: no. -

Make/type: -

Size: in -

Quantity: no. -

Make/type: -

Size: in -

Quantity: no. -

Make/type: -

Size: in -

Quantity: no. -

Make/type: -

**D.2.5 Semi-Automatic DP Slips** None

Size range (largest/smallest): in/in -

Quantity: no. -

Make/type: -

**D.2.6 Drill Collar Slips** None

Size: in -

Quantity: no. -

Make/type: -

Size: in -

Quantity: no. -

Make/type: -

Size: in -

Quantity: no. -

Make/type: -



# IADC Specification

## CP-300 SELF-ELEVATING DRILLING UNIT

---

### D.2.7 Drill Collar Safety Clamps

Quantity:	no.	-
Range:	in/in	-
		-
Quantity:	no.	-
Range:	in/in	-

### D.2.8 Tubing Slips

None

Size:	in	-
Quantity:	no.	-
Make/type:		-

### D.2.9 Tubing Spider

None

Slip size (max/min):	in/in	-
Quantity:	no.	-
Make:		-
Adapter Plate:		-

### D.2.10 Drill Collar Lifting Subs

Quantity: For DC	no.	-
OD: Connection	in	-
Type:		-
Quantity: For DC	no.	-
OD: Connection	in	-
Type:		-
Quantity: For DC	no.	-
OD: Connection	in	-
Type:		-

### D.2.11 DC Lifting Plugs

None

Quantity: For DC	no.	-
OD: Connection	in	-
Type:		-

### D.2.12 Bit Breakers

Quantity:		-
For bit size:		-
Quantity:	no.	-
For bit size:	in	-
Quantity:	no.	-
For bit size:	in	-



# IADC Specification

## CP-300 SELF-ELEVATING DRILLING UNIT

Quantity:	no.	-
For bit size:	in	-
Quantity:	no.	-
For bit size:	in	-

### D.2.13 Elevator Links

Quantity of sets:	no.	1
Make/type:		Varco
Size:	in	2 ¾
Length:	in	132
Rated capacity:	mt	350

Quantity of sets:	no.	1
Make/type:		Varco
Size:	in	3 ½
Length:	in	180
Rated capacity:	mt	500

### D.2.14 Kelly Spinner None

Make/type:		-
------------	--	---

### D.2.15 Drill pipe Spinner

Make/type:		-
Size (max/min):	in/in	-

### D.2.16 Mud Saver Bucket

Make:		None
Size:	in	-

### D.2.17 Hydraulic Make-Up/Breakout Machine (e.g. EZY Torque)

Make/type:		YM-16C
Maximum line pull:	ft lbs	150.000

### D.2.18 Rotary Rig Tongs

Quantity (sets):	no.	1
Make/type:		SDD
Size range (max OD/min OD):	in/in	4 – 17
Torque rating:	ft-lbs	100000

Quantity (sets)::	no.	1
Make/type		B/HT35
Size range (max OD/min OD):	in/in	Up to 20"
Torque rating:	ft-lbs	35000



# IADC Specification

## CP-300 SELF-ELEVATING DRILLING UNIT

### D.2.19 Tubing Tongs (manual)

None

Quantity (sets):	no.	-
Make/type:		-
Size range (max OD/min OD):	in/in	-
Torque rating:	ft/lbs	-

### D.2.20 Tubing Tong Power

Quantity:	no.	-
Make/type:		-
Size range (max OD/min OD):	in/in	-
Max output torque:	ft/lbs	-
Torque indicator:	yes/no	-
Back-up arm:	yes/no	-

### D.2.21 Iron Roughneck

None

Make/type:		-
Size range (max OD/min OD):	in/in	-
Max. makeup torque	ft/lbs	-
Max. breakout torque	ft/lbs	-
Casing Capability	Yes / no	-
Tubing Capability	Yes / no	-
Liner Capability	Yes / no	-
Bit Capability	Yes / no	-
Torque Turn Capability	Yes / no	-

### D.3 FISHING EQUIPMENT

To include all fishing tools for contractor provided tubular both from OD and ID.

According to company requirement

### D.3.1 Overshots

None

Quantity:	no.	-
Make/type:		-
Overshot OD:	in	-
To catch size:	in	-
To catch size:	in	-
To catch size:	in	-
Overshot guide OD:	in	-
Extension sub length:	in	-
Lipped guide (oversize, regular):		-
Grapples (spiral, basket, both):		-
Pack offs:	yes/no	-
Top subs connection type:		-



# IADC Specification

## CP-300 SELF-ELEVATING DRILLING UNIT

**D.3.2 Hydraulic Fishing Jar** None

Quantity:	no.	-
Make/type:		-
OD body:	in	-
Min. ID: stroke:	in	-
Connection type:	in	-
Repair kit:		-
	yes/no	-

**D.3.3 Jar Intensifier** None

Quantity:	no.	-
Make/type:		-
OD body:	in	-
Min. ID:	in	-
Connection type:		-
Repair kit:	yes/no	-

**D.3.4 Surface Jar** None

Quantity:	no.	-
Make/type:		-
OD body:	in	-
stroke:	in	-
Connection type:		-
Repair kit:	yes/no	-

**D.3.5 Fishing Bumper Subs** None

Quantity:	no.	-
Make/type:		-
OD body:	in	-
Min. ID: stroke:	in	-
Connection type:	in	-
		-

**D.3.6 Safety Joints** None

Quantity:	no.	-
Make/type:		-
OD body:	in	-
Min. ID:	in	-
Connection type:		-

**D.3.7 Junk Baskets (Reverse Circulation)** None

Quantity:	no.	-
Make/type:		-
For hole size:	in	-
OD body:	in	-
Connection type:		-
Inside magnet available:	yes/no	-
Mill shoes type (A, B, C):		-



# IADC Specification

## CP-300 SELF-ELEVATING DRILLING UNIT

**D.3.8 Junk Subs** None

Quantity:	no.	-
Make/type:		-
For hole size:	in	-
OD body:	in	-
Connection type:		-

**D.3.9 Flat Bottom Junk Mill** None

Quantity:	no.	-
Make/type:		-
OD flat mill:	in	-
Connection type:		-

**D.3.10 Magnet Fishing Tools** None

Quantity:	no.	-
Make/type:		-
OD body:	in	-
Connection type:		-
Ditch Magnet In Flow Channel	Yes/No	-

**D.3.11 Taper Taps** None

Quantity:	no.	-
Make:		-
Tap OD (max/min):	in/in	-
OD body: Length overall:	in	-
	ft	-
Connection type:		-

**D.3.12 Die Collars** None

Quantity:	no.	-
Make/type:		-
OD (Max/Min):	in/in	-
OD body:	in	-
Connection type:		-



# IADC Specification

## CP-300 SELF-ELEVATING DRILLING UNIT

### E. WELL CONTROL

#### E.1 DIVERTER

Fixed:	yes/no	Yes
Make/type:		DV49-500
Maximum bore:	in	49 1/2"
ID of insert packer:	in	3 & 12
Working pressure:	psi	500
Number of Diverter outlets:	no.	6
Outlet OD (nominal):	in	12

#### **E.1.1 Diverter Flow Lines**

Quantity:	no.	3
Nominal size of flow lines:	in	12
Running from Diverter to:		Mud Ditch1#
Valve make/type:		Hydraulic Ball valve
Quantity:	no.	3
Size:	in	12
Valve operator (air/hydraulic):		Hydraulic

Quantity:	no.	3
Nominal size of flow lines:	in	3
Running from Diverter to:		Trip Tank
Valve make/type:		Ball valve
Quantity:	no.	3
Size:	in	3
Valve operator (air/hydraulic):		Hydraulic

Quantity:	no.	-
Nominal size of flow lines:	in	-
Running from Diverter to:		-
Valve make/type:		-
Quantity:	no.	-
Size:	in	-
Valve operator (air/hydraulic):		-

Quantity:	no.	-
Nominal size of flow lines:	in	-
Running from Diverter to:		-
Valve make/type:		-
Quantity:	no.	-
Size:	in	-
Valve operator (air/hydraulic):		-

**E.1.2 Diverter Control Panel** None

Primary make/type:

Location:





# IADC Specification

## CP-300 SELF-ELEVATING DRILLING UNIT

---

### E.2 HIGH PRESSURE BLOWOUT PREVENTERS

All appropriate components H2S rated	yes/no	Yes
--------------------------------------	--------	-----

#### **E.2.1 Ram Type Preventers**

Quantity:	no.	1
Make/model:		Shaffer
Type: (single/double/triple):		1 single, 1 double
Size:	in	13 5/8
Working pressure:	psi	10K Yes
Ram locks:	yes/no	Poslock
Type (manual/hydraulic):		Yes
H2S service:	yes/no	6 (4+2)
Side outlets:	no.	4 1/16
Size:	in	10k
WP:	psi	BX 159
Bottom connection:		BX 159
Top connection:		No
Shear ram boosters:	yes/no	

#### **E.2.2 Available Rams (installed & spare)**

Quantity/type/size	no./type/in	1 set 9 5/8"
Quantity/type/size	no./type/in	1 set 7"
Quantity/type/size	no./type/in	2 set 5"
Quantity/type/size	no./type/in	2 set 3 1/2"
Quantity/type/size	no./type/in	2 set 4 1/2"
Quantity/type/size	no./type/in	2 set 5 1/2"
Quantity/type/size	no./type/in	1 set Blind/shear
Quantity/type/size	no./type/in	2 set 2 7/8" ~ 5" Variable
Quantity/type/size	no./type/in	2 set 4 1/2 ~ 7" Variable

#### **E.2.3 BOP Ram Configuration (normal)**

Upper:		Annular
Middle:		B/S
Lower:		Ram

#### **E.2.4 Annular Preventer**

Quantity:	no.	1
Make/type:		Shaffer Spherical
Size:	in	20 3/4"
Working pressure:	psi	3K
Bottom Connection:		R74
Top Connection:		R74
Lifting Frame		Yes



# IADC Specification

## CP-300 SELF-ELEVATING DRILLING UNIT

### E. 2.5 Kill Line Valves

Quantity:	no.	1SET
Make/type:		
Size:	in	4 1/16
Working pressure: Gasket	psi	15K
type Hydraulic/manual/non-		BX 159
return:		

### E.2.6 Choke Line Valves

Quantity:	no.	1SET
Make/type:		
Size:	in	4 1/16
Working pressure: Gasket	psi	15K
type Hydraulic/manual/non-		BX 159
return:		

Quantity:	no.	-
Make/type:		-
Size:	in	-
Working pressure: Gasket	psi	-
type Hydraulic/manual/non-		-
return:		-

### E.3 LOW PRESSURE BLOWOUT PREVENTERS None

All appropriate components H2S rated:	yes/no	no
---------------------------------------	--------	----

### E.3.1 Ram Type Preventers

Quantity:	no.	-
Make/model:		-
Type (single/double/triple):		-
Size:	in	-
Working pressure:	psi	-
Ram locks:	yes/no	-
Type (manual/hydraulic):		-
H2S service:	yes/no	-
Side outlets:	no.	-
Size:	in	-
WP:	psi	-
Bottom connection:		-
Top connection:		-
Shear ram boosters:	yes/no	-

Quantity:	no.	-
Make/model:		-
Type (single/double/triple):		-
Size:	in	-
Working pressure:	psi	-
Ram locks:	yes/no	-
Type (manual/hydraulic):		-
H2S service:	yes/no	-
Side outlets:	no.	-



# IADC Specification

## CP-300 SELF-ELEVATING DRILLING UNIT

Size:	in	-
WP:	psi	-
Bottom connection:		-
Top connection:		-
Shear ram boosters:	yes/no	-

### E.3.2 Available Rams (installed & spare)

Quantity/type/size:	no./type/in	-
Quantity/type/size:	no./type/in	-
Quantity/type/size:	no./type/in	-
Quantity/type/size:	no./type/in	-
Quantity/type/size:	no./type/in	-
Quantity/type/size:	no./type/in	-
Quantity/type/size:	no./type/in	-

### E.3.3 BOP Ram Configuration (normal)

Upper:		-
Upper middle:		-
Middle:		-
Middle lower:		-
Lower:		-

### E.3.4 Annular Preventer

Quantity:	no.	-
Make/type:		-
Size:	in	-
Working pressure:	psi	-
Bottom Connection:		-
Top Connection:		-
H2S service:	yes/no	-
Lifting Frame		-

### E.3.5 Kill Line Valves

Quantity:	no.	-
Make/type:		-
Size:	in	-
Working pressure: Gasket type Hydraulic/manual/non-return:	psi	-
		-
		-

Quantity:	no.	-
Make/type:		-
Size:	in	-
Working pressure: Gasket type Hydraulic/manual/non-return:	psi	-
		-
		-

Quantity:	no.	-
Make/type:		-
Size:	in	-
Working pressure: Gasket type Hydraulic/manual/non-return:	psi	-
		-
		-



# IADC Specification

## CP-300 SELF-ELEVATING DRILLING UNIT

### E.3.6 Choke Line Valves

Quantity:	no.	-
Make/type:		-
Size:	in	-
Working pressure: Gasket	psi	-
type Hydraulic/manual/non-		-
return:		-

Quantity:	no.	-
Make/type:		-
Size:	in	-
Working pressure: Gasket	psi	-
type Hydraulic/manual/non-		-
return:		-

### E.4 OTHER BLOWOUT PREVENTERS None

All appropriate components H2S rated	yes/no	-
--------------------------------------	--------	---

### E.4.1 Ram Type Preventers

Quantity:	no.	-
Make/model:		-
Type (single/double/triple):		-
Size:	in	-
Working pressure:	psi	-
Ram locks:	yes/no	-
Type (manual/hydraulic):		-
H2S service:	yes/no	-
Side outlets:	no.	-
Size:	in	-
WP:	psi	-
Bottom connection:		-
Top connection:		-
Shear ram boosters:	yes/no	-

### E.4.2 Available Rams (installed & spare)

Quantity/type/size:	no./type/in	-
Quantity/type/size:	no./type/in	-
Quantity/type/size:	no./type/in	-
Quantity/type/size:	no./type/in	-
Quantity/type/size:	no./type/in	-
Quantity/type/size:	no./type/in	-
Quantity/type/size:	no./type/in	-
Quantity/type/size:	no./type/in	-
Quantity/type/size:	no./type/in	-
Quantity/type/size:	no./type/in	-

### E.4.3 BOP Ram Configuration (normal)

Upper:		-
Upper middle:		-
Middle:		-



# IADC Specification

## CP-300 SELF-ELEVATING DRILLING UNIT

Middle lower: -  
 Lower: -

### E.4.6 Choke Line Valves

Quantity: no. -  
 Make/type: -  
 Size: in -  
 Working pressure: psi -  
 Gasket type -  
 Hydraulic/manual: -

### E.5 BOP CONTROL SYSTEM

#### E.5.1 Accumulator Unit

Make/model: FKDQ1920-13  
 Quantity: no. 1  
 Location: Under cantilever  
 Fluid reservoir capacity: gal 422  
 Stations: No. 13  
 Oil/water mix. rate: gals/min  
 Glycol reservoir capacity: gal  
 Total accumulator capacity (w/o precharge): gal  
 System working pressure: psi 300  
 Control manifold model: Hydraulic and electric and air  
 Regulator type: Nitrogen  
 Total useful accumulator volume equals all preventer opening and closing volumes: yes/no  
 plus percent additional volume: %

#### E.5.2 Accumulator Hydraulic Pumps

Electric Driven:  
 Quantity: no. 3  
 Make/model:  
 Each driven by motor of power: hp 25  
 Flow rate of each pump: gals/min 25.5  
 At operating pressure: psi 3000  
 Operable off emergency generator: yes/no Yes

Air Driven:  
 Quantity: no. 5  
 Make/model:  
 Flow rate of each pump: gals/min  
 AT operating pressure: psi 100

#### E.5.3 Primary Control Panel

Control panel make/model:  
 Location: Drill floor

#### Panel controls for the following functions:

All annular BOP's: yes/no Yes  
 All ram BOP's: yes/no Yes  
 Lock for ram BOP's: yes/no Yes  
 Diverter system: yes/no Yes



# IADC Specification

## CP-300 SELF-ELEVATING DRILLING UNIT

Kill and choke line valves:	yes/no	Yes
Low accumulator pressure warning:	yes/no	Yes
Low reservoir level warning:	yes/no	Yes
Low rig air pressure warning:	yes/no	Yes
System pressure regulator:	yes/no	Yes
Pressure regulator for annular:	yes/no	Yes
Flowmeter:	yes/no	No
Quantity of pressure gauges:	no.	5
Other control functions:	yes/no	No

### E.5.4 Remote Control Panels

Make/model:		
Location:		UNION OFFICE
Ability to operate main closing unit:		Yes
valves directly:	yes/no	Yes
System routing (direct or through panel):		Direct
Remote control of -system pressure regulator:	yes/no	No
Remote control of -annular pressure regulator:	yes/no	No

Make/model:		
Location:		Under cantilever
Ability to operate main closing unit:		Yes
valves directly:	yes/no	Yes
System routing (direct or through panel):		Direct
Remote control of -system pressure regulator:	yes/no	No
Remote control of -annular pressure regulator:	yes/no	No

### E.6 CHOKE MANIFOLD

All appropriate components H2S rated	yes/no	Yes
--------------------------------------	--------	-----

#### E.6.1 Choke Manifold (for instrumentation, See H.3)

Nominal size:	in	4
Minimum ID:	in	4
Maximum WP:	psi	15k

Quantity of fixed chokes:	no.	-
Make/model:		-
Size (ID):	in	-

Quantity of adjustable chokes:	no.	-
Make/model:		-
Size (ID):	in	-

Quantity of hydraulic chokes:	no.	2
Make/model:		
Size (ID):	in	4 "

Power choke remote control panel:	yes/no	Yes
Make/model:		
Location:		Drill floor
Glycol injection:	yes/no	No



# IADC Specification

## CP-300 SELF-ELEVATING DRILLING UNIT

### E.7 FLEXIBLE CHOKE & KILL LINES (BOP to MANIFOLD)

Quantity:	no.	4
Make/type:		
ID:	in psi	4
Working pressure:	yes/no	15K
H2S service:		Yes

### E.8 FLEXIBLE BOP CONTROL HOSES

Quantity:	no.	26
Make/type:		-
ID:	in	1" & 1 1/2"
Working pressure:	psi	3000
Fire resistant:	yes/no	Yes

### E.9 BOP TESTING EQUIPMENT

#### **E.9.1 Hydraulic BOP Test Pump**

Make/model::		
Type:		-
Pressure rating:	psi	15k
Chart recorder	yes/no	Yes

#### **E.9.2 BOP Test Stump**

		Yes
Size:	in	13 5/8"
Size:	in	-
Size:	in	-

### E.10 BOP HANDLING

#### **E.10.1 BOP Hoist System**

Make/type:		Pneumatic
Quantity of hoists:	no.	2
Number of lift point on BOP:	no.	2
System safe working load (max BOP wt):	lb/mt	132277/60

#### **E.10.2 Work Platforms**

BOP work platform (adjustable/fixed/none):		None
Conductor pipe platform:	yes/no	No

#### **E.10.3 Conductor Pipe Tensioning System**

		None
Make/type:		-
Tension capacity:	st	-
Number of lift points:	no.	-
Stroke:	m	-



# IADC Specification

## CP-300 SELF-ELEVATING DRILLING UNIT

---

### **F. MUD SYSTEM/BULK SYSTEM**

#### **F.1 HIGH PRESSURE MUD SYSTEM**

System working pressure:	psi	7500
System test pressure:	psi	10000

#### **F.1.1 Mud Pumps**

Quantity:	no.	3
Make:		BOMCO
Model:		F-1600HL
Type: (Triplex/Duplex):		Triplex
Liner sizes available:	in	4.7-7.5
Mud pump drive motors/pump:	no.	2
Motor type:		
Continuous power rating per motor:	hp	Limited to1000
Fluid end type:		
Maximum working pressure:	psi	7500
Test pressure:	psi	10000
Pump stroke counter type:		None
Supercharging pump:		
Driven by motor of power:	hp	952
Discharge/Suction line ID:	in/in	12"
Mud pump pulsation dampener type:		
Reset Relief Valve type:		JA-3H
Working flow rate per pump at 90% of max spm:		651 bbls per stroke
Liner size:	in	7.5":
Pump speed (90% of max.):	spm	120
Pump pressure:	psi	7500 psi max with 4.7" liners(relevant to liner size in use)
Working flow rate:		651 bbls per stroke
Accessories		-

#### **F.1.2 Transfer Pumps/Mixing Pumps**

Mixing / Transfer Pumps Quantity:	no.	2
Make/model:		SB6X8-13-75KW
Type/Size		6 x 8
Output Capacity:	M3/h	240
Drive motor type:		1480RPM
Power output:	hp	100
Gel Tank Pumps Quantity:	no.	None
Make/model: Type/size:		-
Output capacity:	gpm	-
Drive motor type:		-
Power output:	hp	-





# IADC Specification

## CP-300 SELF-ELEVATING DRILLING UNIT

---

### F.1.3 Booster / Charging Pump

Quantity:	no.	3
Make/Mode:		SB6X8-13-75KW
Type/Size		6 x 8
Capacity (each):	M3/h	240
Drive motor type:		1480 RPM
Power output:	hp	100

### F.1.4 Standpipe Manifold

Quantity of standpipes:	no.	2
Standpipe/ID:	in	5"
H-Type standpipe manifold:	yes/no	Yes
Kill line outlet:	yes/no	Yes
Fill-up line outlet:	yes/no	Yes
Bleed-off line outlet:	yes/no	Yes

### F. 1.5 Rotary Hoses

Quantity:	no.	2
Make/type:		
ID x length:	in x ft	5" x 80
Working pressure:	psi	7.5k
Snubbing lines:	yes/no	Yes

### F. 1.6 Cementing Hose

Quantity:	no.	1
Type (armor sheath/flexible steel pipe):		Armor
Length:	ft	45
ID:	in	3
Working pressure:	psi	15k

### F.1.7 High Pressure Flexible Steel Pipe

		None
Make/type:		-
Integral connections/fittings (non-threaded):	yes/no	-
ID:	in	-
Working pressure:	psi	-
Section length:	ft	-
Quantity:	no.	-
Section length:	ft	-
Quantity:	no.	-
Sweep swivels, make/type:		-
Nom. size ID:	in	-
Suitable for H2S service:	yes/no	-



# IADC Specification

## CP-300 SELF-ELEVATING DRILLING UNIT

### F.2 LOW PRESSURE MUD SYSTEM

#### F.2.1 Mud Processing Tank

Shaker #1 tank, usable volume:	bbl	70
Shaker #2 tank, usable volume:	bbl	70
Agitated:	yes/no	No
Shaker #3 tank, usable volume:	bbl	70
Agitated:	yes/no	No
Shaker #4 tank, usable volume:	bbl	70
Agitated:	yes/no	No
Shaker #5 tank, usable volume:	bbl	70
Agitated:	yes/no	No
Total usable capacity:	bbl	350

#### F.2.2 Mud Tanks

Mud Pits		
Quantity:	no.	8
Total Usable capacity:	bbl	3772
Type (active/reserve):		Active and reserve
Height:	cm	305 cm
Mixer:	yes/no	Yes
Mud guns:	yes/no	Yes
Slug Pits		
Quantity:	no.	1
Total Usable capacity:	bbl ft	127
Height:	yes/no	10 ft
Mixer:	yes/no	Yes
Mud guns:		Yes
Mud Storage Pits	no.	None
Quantity:	bbl	-
Total Usable capacity:		-
Type (active/reserve):	ft	-
Height:	yes/no	-
Mixer:	yes/no	-
Mud guns:		-

#### F.2.3 Pill/Slug Tank

Capacity (usable):	bbl	-
Mud agitator:	yes/no	-
Mud guns:	yes/no	-

#### F.2.4 Trip/Stripping Tanks

Capacity (usable):	m <sup>3</sup>	12
Capacity/foot:	bbl/ft	
Level indicator:	yes/no	Yes
Electric pump make:		CHENGDU WEST
Model/type:		SB3X4J-91/2
Rated capacity:	hp	15
Facility for casing fill-up:	yes/no	
Alarm and strip chart recorder:	yes/no	no





# IADC Specification

## CP-300 SELF-ELEVATING DRILLING UNIT

Make/model:		DERRICK
Type:		FLO-LINE CLEANER 504
Nominal flow rate:	bbbl/min	
Number of cones:	no.	8
Size:	in	4" & 10"
Feed pump make/model:		SB6X8-13-75KW
Type/size:		6X8
Capacity:	M3/h	240
Drive motor hp:	hp	100
Is pump dedicated to mud cleaner:	yes/no	No

### F.2.10 Mud/Gas Separator (Poor Boy)

Make/type:		NQF1200/1.6
Design codes		ASME
Dimensions (height x OD):	ft xft	13x 3.94
Gas discharge line ID:	in	8
Gas discharge location, primary:		Above derrick crown
Can discharge be tied into burner system:	yes/no	No
Design temperature	Deg C	200 Deg F
Vacuum breaker:	yes/no	No
Hot mud injection	yes/no	No
Mud seal height:	ft	10.83
Pressure gauge:	yes/no	Yes
Calculated gas throughput:	mmscf	-
Test pressure	psi	-

### F.2.11 Degasser

Make/type:		ZSCQ/240
Nominal flow rate:	bbbl/min	25.3
Feed pump make/model:		CHENGDU WEST
Type/size:		SB5X6J-12-37KW
Drive motor hp:	hp	50
Is pump dedicated to degasser:	yes/no	Yes
Vacuum pump make type:		

### F.2.12 Mud Agitators

Quantity:	no.	13
Make/model:		CHENGDU WEST
Driven by motor of power:	hp	10
Located in tanks:		Mud pits 1- 7
Quantity:	no.	2
Make/model:		CHENGDU WEST -
Driven by motor of power:	hp	20
Located in tanks:		Mud pits 8,9
(see F.2.1 and F.2.2 for tank designations)		-

### F.2.13 Mud Centrifuge

Quantity:	no.	2
Make/model:		CHENGDU WEST
Feed pump make/model:		SB2X3J-7.5KW
Type/size:		2X3



# IADC Specification

## CP-300 SELF-ELEVATING DRILLING UNIT

Capacity:	bbl/min	6.32
Drive motor hp:	hp	10
Is feed pump dedicated to centrifuge(s)	yes/no	Yes

### F.2.14 Mud Laboratory And Facilities

Separate room:	yes/no	Yes
Equipped with:		
Mud balance:	yes/no	Yes
Marsh funnel:	yes/no	Yes
Filtration kit:	yes/no	Yes
Sand content kit:	yes/no	Yes
Air Conditioning:	yes/no	Yes
Positive pressure:	yes/no	Yes

### F.3 BULK SYSTEM

#### F.3.1 Barite/Bentonite Silos

Quantity:	no.	2
Capacity of each silo:	ft3	2400
Locations:		above main deck
Type weight loadcell:		Chbt-30
Manufacturer:		Dong ying wan bang
Pressure rating:	psi	65
Relief valve(s) installed:	yes/no	Yes
Additional information:		-

#### F.3.2 Cement Silos

Quantity:	no.	3
Capacity of each silo:	ft3	2400
Locations:		above main deck
Type weight loadcell:		Chbt-30
Pressure rating:	psi	65
Relief valve(s) installed:	yes/no	Yes
Separate mud/cement loading facilities:	yes/no	Yes
Cement discharge independent from barite/bentonite:	yes/no	Yes

#### F.3.3 Surge Tank For Barite/Bentonite

Quantity:	no.	1
Capacity of each tank:	ft3	77
Type weight load cell:		no
Manufacturer:		Dong ying wan bang
Pressure rating:	psi	22
Relief valve(s) installed:	yes/no	Yes

#### F.3.4 Mud Hopper

Quantity:	no.	4
Make/model:		CHENGDU WEST/ZHP150
Feed pump make/model:		
Type/size:		
Capacity:	bbl/min	



## IADC Specification

### CP-300 SELF-ELEVATING DRILLING UNIT

Drive motor hp:	hp	
Is feed pump dedicated to mud hopper(s):	yes/no	No

#### F.3.5 Shear Pump

Quantity:	no.	1
Make/model:		CHENGDU WEST/WJQ5X6J-55KW
Feed pump make/model:		-
Type/size:		-
Capacity:	bbbl/min	15

#### F.3.6 Surge Tank For Cement

Quantity:	no.	1
Capacity of each tank:	ft3	88
Type weight load cell:		Chbt-30
Manufacturer:		Dong ying wan bang
Pressure rating:	psi	17
Relief valve(s) installed:	yes/no	Yes

#### F.3.7 Bulk Transfer System (see also C.1.7 -Compressed Air Systems)

Independent air system for the silos and surge		No
Tanks consisting of a high-volume low-Pressure compressor and air drier:	yes/no	No
Air reduced from main air supply through Pressure regulators:	yes/no	Yes
Separate volume tank and drier:	yes/no	No

#### F.3.8 Dust Extractor

Quantity:	No	1
Manufacturer:		Dong ying wan bang
Type		WB-HC5.5-2
S/N		



# IADC Specification

## CP-300 SELF-ELEVATING DRILLING UNIT

---

### **G. CASING/CEMENTING EQUIPMENT**

#### **G.1 CASING EQUIPMENT**

**G.1.1 Drive Hammer** None

Make/type: -  
 Minimum casing/conductor OD: in -  
-

**G.1.2 API Casing Drifts** None

For casing OD, weight, quantity: in/lbs/ft/no. -  
 For casing OD, weight, quantity: in/lbs/ft/no. -  
 For casing OD, weight, quantity: in/lbs/ft/no. -  
 For casing OD, weight, quantity: in/lbs/ft/no. -  
 For casing OD, weight, quantity: in/lbs/ft/no. -  
 For casing OD, weight, quantity: in/lbs/ft/no. -

**G.1.3 Clamp-On Casing Thread Protectors** None

For casing OD, quantity: in/no. -  
 For casing OD, quantity: in/no. -  
 For casing OD, quantity: in/no. -  
 For casing OD, quantity: in/no. -  
 For casing OD, quantity: in/no. -  
 For casing OD, quantity: in/no. -

**G.1.4 Side Door Casing Elevator**

Quantity: no. 1  
 For OD casing: in 20  
 Make/type: BJ  
 Capacity: st 150

**Automatic Elevators** None

Quantity: no. -  
 For OD drill pipe: in -  
 For OD collars: in -  
 For OD casing: in -  
 Make/type: -  
 Capacity: st -

Quantity: no. -  
 For OD casing: in -  
 Make/type: -  
 Capacity: st -



# IADC Specification

## CP-300 SELF-ELEVATING DRILLING UNIT

---

### G.1.5 Single Joint Casing Elevators

Quantity:	no.	1
For OD casing:	in	20
Make/type:		BJ
Quantity:	no.	2
For OD casing:	in	13 3/8
Make/type:		BJ
Quantity:	no.	2
For OD casing:	in	9 5/8
Make/type:		BJ
Quantity:	no.	2
For OD casing:	in	7
Make/type:		BJ
Quantity:	no.	-
For OD casing:	in	-
Make/type:		-
Quantity:	no.	-
For OD tubing:	in	-
Make/type:		-
Quantity:	no.	-
For OD tubing:	in	-
Make/type:		-
Quantity:	no.	2
For OD DP:	in	5
Make/type:		BJ
Quantity:	no.	2
For OD DP:	in	3 1/2
Make/type:		BJ

### G.1.6 Slip Type Elevator/Spiders

Quantity:	no.	1
Make/type:		BJ
Pneumatic/manual:		Yes
Capacity:	st	500
Slips for OD tubing sizes:	in	7 – 13 3/8
Quantity:	no.	1
Make/type:		BJ
Pneumatic/hydraulic/manual:		Yes
Capacity:	st	500
Slips for OD casing sizes:	in	7 – 13 3/8





# IADC Specification

## CP-300 SELF-ELEVATING DRILLING UNIT

---

### G.1.7 Casing Slips

Quantity:	no.	1
Make/type:		Varco
For OD casing:	in	13 3/8

Quantity:	no.	1
Make/type:		Varco
For OD casing:	in	9 5/8

Quantity:	no.	1
Make/type:		Varco
For OD casing:	in	7

Quantity:	no.	-
Make/type:		-
For OD casing:	in	-

### G.1.8 Casing Bowls

Quantity:	no.	3
Make/type:		Varco MPCH
For OD casing (max/min):	in/in	Size 1,2 and 3. 8", 9 5/8" 13 3/8"

Quantity:	no.	1
Make/type:		Varco MPCH
For OD casing (max/min):	in/in	20"

### G.1.9 Manual Casing Tongs

None

Quantity (sets):	no.	-
Make/type:		-
W/jaws for OD casing (max/min):	in/in	-

Quantity (sets):	no.	-
Make/type:		-
W/jaws for OD casing (max/min):	in/in	-

### G.1.10 Power Casing Tongs

None

Quantity:	no.	-
Make/type:		-
W/jaws for OD casing (max/min):	in/in	-
Max output torque:	ft-lbs	-
Torque indicator:	yes/no	-
Back-up arm:	yes/no	-

### G.1.11 Power Unit For Casing & Tubing Tongs

None

Quantity:	no.	-
Make/type:		-
Capacity (ea.):	gpm	gpm
Output pressure:	psi	psi
Dedicated unit:	yes/no	yes/no



# IADC Specification

## CP-300 SELF-ELEVATING DRILLING UNIT

---

**G.1.12 Casing Circulating Head (Swedge) None**

For OD casing: psi -  
 Connection type: top/bottom -

**G.1.13 Casing Spears (Internal) None**

Quantity: no. -  
 Make/type: -  
 For OD casing: in -  
 For casing weight: lbs/ft -  
 Pack-off: yes/no -

**G.1.14 Casing Cutters (Internal) None**

Quantity: no. -  
 Make/type: -  
 For OD casing (max/min): in/in -

**G.1.15 Crossover to Handle Casing with Drill Pipe None**

Quantity: no. -  
 For OD casing: in -  
 Casing connection type: -  
 Drill pipe connection type: -  
 Rated capacity: st -

**G.1.16 Casing Scrapers None**

Quantity: no. -  
 Make: -  
 For OD casing: in -  
 For casing weight: lbs/ft -  
 OD body: in -  
 Connection type: -  
 Blade type (roller/fixed) -

**G.2 CEMENTING EQUIPMENT**

**G.2.1 Cement Unit**

Owner: ServaSJS  
 Free placement basis: yes/no Yes  
 Make/type: -  
 No. of triplex pumps: no. 3  
 Maximum working pressure: psi 14137  
 Maximum flow rate (total): bbl/min 14  
 Unit power by (electric/diesel): diesel  
 Re-circulating mixing system: yes/no yes  
 Capacity: bbl 20  
 Motor power: hp 475  
 Liquid additive system: yes/no no  
 Premix/batch tank: gal/min -  
 Quantity: no. -  
 Capacity (total): bbl -



# IADC Specification

## CP-300 SELF-ELEVATING DRILLING UNIT

Pressure recorder:	yes/no	-
Densimeter recording device:	yes/no	-

### G.2.2 Cementing Manifold

Discharge manifold working pressure:	psi	10000
Cement pump discharge lines min. ID:	in	3
Cement pump discharge lines working pressure:	psi	10000
Manifold safety pressure relief valve:	yes/no	no

### G.2.3 Cementing Standpipe

Quantity:	no.	1
Working pressure:	psi	10000
ID:	in	3
Connection to choke manifold:	psi	10000
Connection to standpipe manifold:	yes/no	Yes

### G.2.4 Cementing Kelly

Quantity:	no.	None
Nominal size OD:	in	
Total length:	ft	
Working length:	ft	
Connection type:		
Cement head:	yes/no	No

### G.2.5 Cementing Tubing

Size:	in ft	-
Length (total):	yes/no	-
X-overs to drillpipe (specified in section D.1.3):		-



# IADC Specification

## CP-300 SELF-ELEVATING DRILLING UNIT

### H. INSTRUMENTATION/COMMUNICATION

#### H.1 DRILLING INSTRUMENTATION AT DRILLER'S POSITION

##### H.1.1. Weight Indicator

Make/Type:	Shenkai/720kn(12&14 require)
Sensor type:	SK-8Y21A(0-9MP)

##### H.1.2 Standpipe Pressure Gauges

Quantity:	no.	1
Make/type:		Shenkai
Maximum pressure reading:	psi	10000(70MP)

##### H.1.3 Choke Manifold Pressure Gauges

Quantity:	no.	4
Make/type:		M/D Totco
Maximum pressure reading:	psi	10000

##### H.1.4 Rotary Instrumentation

Make/type:	None
Maximum RPM:	rpm

##### H.1.4.2 Torque Indicator

Make/type:	None
Maximum torque:	ft-lbs

##### H.1.5 Top Drive Instrumentation

##### H.1.5.1 Tachometer

Make/type:	None
Maximum RPM:	rpm

##### H.1.5.2 Torque Indicator

Make/type:	None
Maximum torque:	ft-lbs

##### H.1.6 Pump Stroke Counters

Quantity:	no.	3
Make/type:		Shenkai
Stroke indicator and cumulative stroke counter for each pump:	yes/no	Mud watch system Yes

##### H.1.7 Tong Torque Indicator

Make/type:	None
Maximum torque:	ft-lbs
Make/type:	None



# IADC Specification

## CP-300 SELF-ELEVATING DRILLING UNIT

### H.1.8 Pit Volume Totalizer

Make/model:		Shenkai SK-8C05
Float in active mud tanks:	yes/no	Yes
Quantity per tank:	no.	1
Floats in reserve mud tanks:	yes/no	Yes
Quantity per tank:	no.	1
Floats in mud processing tanks:	yes/no	yes
Quantity per tank:	no.	1
Loss/Gain indicator:	yes/no	Yes
Audio Alarm:	yes/no	Yes
Visual Alarm:	yes/no	Yes

### H.1.9 Mud Flow Indicator

Make/model:		Shenkai SK-8L03
High/low alarm:		No
Audio Alarm:	yes/no	Yes
Visual Alarm:	yes/no	Yes
Sensor location:		Mud ditch above shaker

### H.1.10 Trip Tank Indicator

Make/model:		Shenkai SK-8C05
Chart recorder:	yes/no	yes
Alarm:	yes/no	Yes

### H.1.11 Automatic Driller (see B.2.1)

Make/type:	Wild Cat Services/ ADS-1
------------	--------------------------

### H.1.12 Remote Choke Control Unit (see E.5)

### H.1.13 Crown Clearance Indicator

Make/type:	M/D Totco
------------	-----------

### H.1.14 Integrated Control Cabin & Information System

		None
Make/type		-
Quantity:	no.	-
Control Console		-
Touch Screen	yes/no	-
Weight Indicator System	yes/no	-
Discreet Control Devices	yes/no	-
Joystick activated Drawworks	yes/no	-
Joystick activated Cathead	yes/no	-
Emergency Stop/Park Brake	yes/no	-
Block Control Range Override	yes/no	-
Hole Fill Pump Start/Stop	yes/no	-
Trip Tank Pump Start/Stop	yes/no	-
Drill Floor Emergency Shutdown	yes/no	-
UPS (None/Single/Dual)		-
Multi Tool Control (MTC) Cabinet	yes/no	-
Drilling Signal distribution System:		-
Make/type		-
Electronic gauges for primary drilling instrumentation	yes/no	-



# IADC Specification

## CP-300 SELF-ELEVATING DRILLING UNIT

Pit Volume Totaliser	yes/no	-
Electronic Drilling Recorder	yes/no	-
<b>FOR DATA ACQUISITION NETWORK PLEASE REF TO: N.1.3 ACQUISITION NETWORK</b>		None
Drilling Information management system:		-
Make/type		-
Realtime	yes/no	-
Printed Report Types		-

### H.2 DRILLING PARAMETER RECORDER

Quantity:	no.	1
Make/type:		Shenkai
Location -1:		DRILLER'S HOUS
Type (display/recorder/both):		display
Location -2:		03-LEVEL OFFICE
Type (display/recorder/both):		both
Location -3:		no
Type (display/recorder/both):		no
Number of parameters recorded:	no.	9
Parameter recorded:		Topdrive / rotary RPM
Parameter recorded:		Weight on bit
Parameter recorded:		Hook Load
Parameter recorded:		Pump speed Pumps 1,2 &3
Parameter recorded:		STAND PIPE PRESSURE
Parameter recorded:		Topdrive and rotary Drilling torque
Parameter recorded:		tank level
Parameter recorded:		Active and reserve mud tank level
Parameter recorded:		well depth

### H.3 INSTRUMENTATION AT CHOKE MANIFOLD

#### **H.3.1 Standpipe Pressure Gauge**

(Drill pipe pressure gauge)		
Quantity:	no.	1
Make/type:		NOV
Pressure range (maximum):	psi	10K
Visible from choke operating position:	yes/no	Yes

#### **H.3.2 Choke Manifold Pressure Gauge**

(Casing pressure gauge)		
Quantity:	no.	1
Make/type:		NOV
Pressure gauge:	psi/psi	15K



# IADC Specification

## CP-300 SELF-ELEVATING DRILLING UNIT

---

### H.4 INSTRUMENTATION AT STANDPIPE

#### H.4.1 Standpipe Pressure Gauge

Quantity:	no.	1
Make/type:		NOV
Pressure gauge:	psi/psi	10K
Visible from driller's position:	yes/no	Yes
Visible from choke operating system:	yes/no	No

### H.5 DEVIATION EQUIPMENT

#### H.5.1 Deviation Recorder None

Quantity:	no.	-
Make/type:		-
Deviation range:	degree/degree	-

#### Deviation Instrument None

. Make and type	No.	-
. Recording/range	degree	-
. Go-devil diameter	inch	-
. Recovery equipment		-

#### H.5.2 Slickline Unit (see B.2.4)

### H.6 RIG COMMUNICATION SYSTEMS

#### H.6.1 Rig Telephone System None

No. of stations:	no.	-
Make/type:		-
Explosion proof:	yes/no	-

#### H.6.2 Public Address System

Can be combined with H.6.1 above:	yes/no	None
No. of stations:	no.	-
Make/type:		-
Explosion proof:	yes/no	-

#### H.6.3 Drill Floor Talkback System None

No. of stations:	no.	-
Location:		-
Location:		-
Location:		-
Make/type:		-
Explosion-proof:	yes/no	-

#### H.6.4 Hand Held VHF Radios None

Quantity:	no.	-
Quantity intrinsically safe:	no.	-



# IADC Specification

## CP-300 SELF-ELEVATING DRILLING UNIT

### H.6.5 Crane Communication System

Quantity:	no.	3
Make/type:		-
Explosion proof:	yes/no	No
Part of rig telephone system (H.6.1):	yes/no	No
Part of public address system (H.6.2):	yes/no	No

### H.6.6 Computer Network LAN

Make/type:		ImNet
Fiber Optics:	yes/no	No
Outlet Locations:		Office, Central control room, hospital, recreation, 1 man room, 2 men room, four men room etc.

T-P1002 Weather Sensor with installation bracket. (for barometric pressure, air temperature, barometric pressure trend, humidity,) P255 Weather digital data indicator DIN 144x144mm (for barometric pressure, air temperature, barometric pressure trend, humidity,) flush mounting

### H.7 ENVIRONMENTAL INSTRUMENTATION

#### H.7.1. Temperature Indicators None

Air temperature (make/model):		-
Recorder:	yes/no	-
Sea water temperature (make/model):	yes/no	-
Recorder:	yes/no	-

#### H.7.2 Barometric Pressure Indicator None

Make/model:		-
Recorder:	yes/no	-

#### H.7.3 Humidity Sensing Indicator None

Make/model:		-
Recorder:	yes/no	-

#### H.7.4 Wind Speed/Direction Meter

Make/model:		LILLEY & GILLIE / T-P296
Recorder:	yes/no	No

#### H.7.5 Wave Profile Recorder None

Make/model:		-
Recorder:	yes/no	-

#### H.7.6 Current Indicator None

Make/model:		-
Located at:		-
Recorder:	yes/no	-

#### H.7.7 Weather Facsimile

Make/model:		- JMC/ FX-330
Located at:		Jacking Control Room
Recorder:	yes/no	Yes(1)





# IADC Specification

## CP-300 SELF-ELEVATING DRILLING UNIT

---

### H.8 NAVIGATION INSTRUMENTATION

#### H.8.1 Gyro Compass

None

Make/model:

-

Located at:

-

#### H.8.2 Depth Sounder

None

Make/model:

Nanjing Ninglu/ DS2008

Located at:

Jacking control room

Recorder:

yes/no

No

#### H.8.3 Radar

None

Quantity:

no.

-

Make/model:

-

Located at:

-

Bandwidth:

cm

-

### H.9 EXTERNAL COMMUNICATIONS EQUIPMENT

#### H.9.1 SSB Transceiver

Location(s):

Radio Room, Jacking Control Room

Quantity:

no.

2

Make/model:

Sailor 6300

Power:

watts

250

Frequency ranges (low/high):

khz/mhz

150/30

(Synthesized crystal):

NO

Facsimile capable (see also H.9.9):

yes/no

No

Telex capable (see also H.9.10):

yes/no

No

#### H.9.2 E.P.I.R.B's

Quantity:

no.

1

Make/model:

Sailor 406Mhz EPIRB

Location(s):

04-level

#### H.9.3 Marine VHF Radio

Quantity:

no.

2

Make/model:

Sailor 6222

Power:

watt

25

Channels:

70

Location:

Radio Room, Jacking Control Room

Quantity:

no.

6

Make/model:

Sailor 3520

Power:

watt

2W/1W

Channels:

SP3520 16

Location:

Jacking Control Room

Quantity:

no.

-



# IADC Specification

## CP-300 SELF-ELEVATING DRILLING UNIT

Make/model: -  
 Power: watt -  
 Channels: -  
 Location: -

### H.9.4 Aircraft Radio Beacon Transmitter (NDB)

Quantity: no. 1  
 Make/model: Southern Avionics SA-100H  
 Power: watts 25 to 100 Watts

### H.9.5 Aeronautical VHF Transceiver

Quantity: no. 1  
 Make/model: IC-A24 5W  
 Power: watts 5W+  
 Frequency range (low/high): mhz/mhz 118/136.975  
 (Synthesized/crystal): -  
 Location(s): Jacking Control Room

Quantity: no. -1  
 Make/model: ICOM model IC-A110 VHF  
 Power: watts 36W  
 Frequency range (low/high): mhz/mhz -18/136.975  
 (Synthesized/crystal): -  
 Location(s): - Jacking Control Room

### H.9.6 Watch Receiver

Quantity: no. 1  
 Make/model: MR-5  
 Frequency: khz 190-245

### H.9.7 Satellite Communication System

Make/model: Sailor FB250  
 Type: FB250  
 Facsimile capable (see also H.9.9) yes/no Yes  
 Telex capable (see also H.9.10) yes/no No  
 Location(s): Jacking Control Room

### H.9.8 Inmarsat

Number of phone lines: no. None

### H.9.9. Facsimile

Make/model: Combined with Sailor SSB transceiver H 9.1  
 Connected to: Back up batteries

### H.9.10 Telex

Make/model: Combined with Sailor SSB transceiver H 9.1  
 Connected to: Back up batteries

### H.9.11 Scrambler

Make/model: None  
 Make/model: -  
 Connected to: -



# IADC Specification

## CP-300 SELF-ELEVATING DRILLING UNIT

---

### H.9.12 Other Communication System

Make/model: Connected to:

Navtex Receiver / NX500 Main supply

Make/model: Connected to:

Furuno AIS FA-100 Main supply

Make/model: Connected to:

Furuno GPS Navigator GP-80 Main supply



# IADC Specification

## CP-300 SELF-ELEVATING DRILLING UNIT

### I. PRODUCTION TEST EQUIPMENT

#### I.1 BURNERS

None

Make/type:		-
Quantity:	no.	-
Capacity:	bbl/day	-
Weight:	st	-
Water requirement at 100 psi:	bbl/min	-

#### I.2 BURNER BOOMS

None

Make/type:		-
Quantity:	no.	-
Length:	ft	-
Horizontal:	yes/no	-
Maximum wind speed:	knots	-
Walkway and handrails:	yes/no	-
Burner platform size:	ft x ft	-
Burner mounting rotatable:	yes/no	-
Location:		Port and starboard, front/outside of aft legs

#### I.3 PIPING ON BURNER BOOMS

##### **I.3.1 Oil Line**

None

ID:	in	-
Working pressure:	ksi	-
Connection type at burner end:		-
H2S:	yes/no	-
Pressure gauge connection at barge end:	in	-

##### **I.3.2 Gas Line**

None

ID:	in	-
Working pressure:	ksi	-
Extended beyond burner by:	ft	-
Connection type at burner end:		-
H2S:	yes/no	-
Pressure gauge connection at barge end:	in	-

##### **I.3.3 Water Line**

None

ID:	in	-
Working Pressure:	psi	-
Connection type at burner end:		-
Pressure gauge connection at barge end:	in	-

##### **I.3.4 Air Line**

None

ID:	in	-
Working Pressure:	psi	-
Connection type at burner end:	type	-
Pressure gauge connection at barge end:	in	-



# IADC Specification

## CP-300 SELF-ELEVATING DRILLING UNIT

**I.3.5 Pilot Gas line** None

ID:	in	-
Working Pressure:	psi	-
Connection type at burner end:	type	-
Pressure gauge connection at barge end:	in	-

**I.4 SPRINKLER SYSTEM** None

System in place:	yes/no	-
Pump source:		-

**I.5 FIXED PIPING FOR WELL TESTING** None

**I.5.1 Drill Floor to Separator Area** None

Type (screwed/welded, both):		-
Quantity:	no.	-
Size ID:	in	-
Working pressure:	psi	-
Connection on drill floor:	type	-
Connection at separator:	type	-
Number of valves/lines:	no.	-
Size of valves:	in	-
H2S:	yes/no	-

**I.5.2 Separator Area to Burner Booms** None

Service (oil/gas):		-
Type (screwed/welded, both):		-
Quantity:	no.	-
Size ID:	in	-
Working pressure:	psi	-
Connection at separator:	type	-
Connection at boom:	type	-
Number of valves/lines:	no.	-
Size of valves:	in	-
H2S:	yes/no	-
Valves installed near separator area for switching gas to either burner:	yes/no	-

**I.5.3 Water Lines to Burner Booms** None

Type (screwed/welded/both):		-
Quantity:	no.	-
Size ID:	in	-
Working pressure:	psi	-
Number of valves required:	no.	-
Size of valves:	in	-
Pump source:		-
Rated line capacity at 300 psi:	bbl/hr	-

**I.5.4 Air System to Burner Booms** None

Type (screwed/welded/both):		-
-----------------------------	--	---



# IADC Specification

## CP-300 SELF-ELEVATING DRILLING UNIT

Quantity:	no.	-
Size ID:	in	-
Working pressure:	psi	-
Non-return valves fitted:	yes/no	-
Air source:		-

**I.5.5 Oil Storage Tank To Offload** None

Type (screwed / welded / both):			-
Quantity:	no.		-
Size ID:	in		-
Working pressure:	psi		-
Connection at separator area:	type		-

**I.5.6 Separator to Vent Stack of Rig** None

Type (screwed/welded, both):			-
Quantity:	no.		-
Size ID:	in		-
Working pressure:	psi		-
Connection type at separator area:	type		-

**I.6 AUXILIARY POWER AVAILABILITY**

**I.6.1 For Field Laboratory** None

Quantity:	no.		-
Volts:	volts		-
Frequency:	hz		-
Breaker:	amp		-

**I.6.2 For Crude Transfer Pump** None

Quantity:	no.		-
Volts:	v		-
Frequency:	hz		-
Breaker:	amp		-

**I.6.3 For Electric Heaters** None

Quantity:	no.		-
Volts:	v		-
Frequency:	hz		-
Breaker:	amp		-



# IADC Specification

## CP-300 SELF-ELEVATING DRILLING UNIT

---

J. WORKOVER TOOLS

None



# IADC Specification

## CP-300 SELF-ELEVATING DRILLING UNIT

### **K. ACCOMMODATION SAFETY EQUIPMENT**

#### **K.1 OFFICES**

##### **K.1.1 Company Representative's Office**

Quantity:	no.	1
State rooms in above:	no.	-
Complete with desk, filing cabinets(s) and other necessary furniture:	yes/no	Yes
Quantity with unrestricted view to drill floor:	no.	Yes

##### **K.1.2 Contractor's Representative's Office**

Quantity:	no.	1
Quantity with unrestricted view to drill floor:	no.	yes

##### **K.1.3 Control Room**

Quantity:	no.	1
-----------	-----	---

##### **K.1.4 Radio Room**

Quantity:	no.	1
-----------	-----	---

##### **K.1.5 Helicopter Ready Room**

Quantity:	no.	None
-----------	-----	------

##### **K.1.6 Hospital Room**

Number of beds/bunks:	no.	1
Dangerous drugs locker:	yes/no	Yes

#### **K.2 LIVING QUARTERS**

##### **K.2.1 Accommodations**

Total Beds:	no.	Bed space for 105 persons
No. of beds per room type (1,2,3, etc):	no.	5x 1 bed, 50 x 2 beds,
Number of rooms:	no.	5 x 1 man cabins 14 x 2 man cabins 18 x 4 man cabin
Toilets (private/shared/communal):		9 private, 5 shared, 4 communal
Showers (private/shared/communal):		9 private, 5 shared, 11 communal
Beds available for Company		(included in the above total 55 beds):
Total beds available for Company:	no.	-
No. of beds per room type (1,2,3, etc):	no.	-
Number of rooms:	no.	-

##### **K.2.2 Galley**

Quantity:	no.	1
-----------	-----	---





# IADC Specification

## CP-300 SELF-ELEVATING DRILLING UNIT

---

### K.2.3 Mess Seating Capacity

Main mess:	no.	52 seats
Aux. mess:	no.	-

### K.2.4 Meeting Rooms

yes

Quantity:	no.	1 meeting room for 35 persons
-----------	-----	-------------------------------

### K.2.5 Recreation Rooms

Quantity:	no.	2
Recreation facilities		-
TV:	no.	1
VCR / DVD:	no.	1
Pool Table:	no.	-
Ping Pong Table:	no.	-
Computer:	no.	-
Workout/weight room:	no.	-
Gymnasium:	no.	1 set
Other:		-

### K.2.6 Other Rooms

Change rooms:	no.	1
Prayer room:	no.	1
Cinema:	no.	-
Other:		-



# IADC Specification

## CP-300 SELF-ELEVATING DRILLING UNIT

### L. SAFETY EQUIPMENT

#### L.1 GENERAL SAFETY EQUIPMENT

##### L.1.1 General Personnel Protective Gear

Safety glasses (contractor/everyone/not supplied):	-
Safety hats (contractor/everyone/not supplied):	-
Safety boots (contractor/everyone/not supplied):	-
Safety clothing (contractor/everyone/not supplied):	-
Ear protection (contractor/everyone/not supplied):	-
Rubber gloves (contractor/everyone/not supplied):	-
Rubber aprons (contractor/everyone/not supplied):	-
Rubber gloves -elbow length (contractor/everyone not/supplied):	-
Fullface visors (contractor/everyone/not supplied):	-
Eye shields (contractor/everyone/not supplied):	-
Dust masks (contractor/everyone/not supplied):	-
Explosion proof hand torches (contractor/everyone/not supplied):	-
Safety belts c/w lines: (contractor/everyone/not supplied):	-

##### L.1.2 Decontamination Stations

###### L.1.2.1 Eye Wash Stations

Quantity -fixed:	no.	6
Make/model:		
Location(s):		Rig floor –Sack store – Deck salt hopper-Cement unit –shaker –Mud pit room

###### L.1.2.2 Safety Showers

Quantity:	no.	-
Make/model		-
Location(s):		Sack store – Cement unit room

##### L.1.3 Derrick Safety Equipment

Derrick escape chute (rem chute):	no.	-
Make/type:		-
Geronimo line:	yes/no	Yes
Derrick safety belts:	no.	2
Make/type:		Miller
Derrick safety belts:	no.	-
Make/type:		-

##### L.1.4 Derrick Climbing Assistant

Make/type:	Counter balance
------------	-----------------



# IADC Specification

## CP-300 SELF-ELEVATING DRILLING UNIT

### L.1.5 Fresh Air Blowers (Bug Blowers)

Quantity:	no.	5
Make/type:		Fan
Located at:		Shaker area/drilling floor/mud pit/mud pump room/sack storage room

### L.2 GAS/FIRE/SMOKE DETECTION

#### L.2.1 H2S Monitoring System

Make/type:		ROCKWELL
Sampling points at:		-
Bellnipple:	yes/no	NO
Drillfloor:	yes/no	Yes/3
Shale shaker:	yes/no	Yes/1
Mud tanks:	yes/no	Yes/3
Ventilation system into living quarters:	yes/no	Yes/7
Other:	No.	10
Alarms at:		
Driller's console (audible/visual/both):		Both
Engine room (audible/visual/both):		Both
Mud room (audible/visual/both):		Both
Living quarters each level (audible/visual/both):		Both
Central area each structural level (audible/visual/both):		Both
Other:		Life Boat Station
Tied to general alarm:	yes/no	Yes
Central control panel:	yes/no	Yes
Located at:		Radio Room & Jacking Control Room
Local alarm (audible/visual/both):		Both

#### L.2.2 Combustible Gas Monitoring System

Make/type:		ROCKWELL
Sampling points at:		
Bellnipple:	yes/no	NO
Drillfloor:	yes/no	Yes/3
Shale shaker:	yes/no	Yes/1
Mud tanks:	yes/no	Yes/3
Ventilation system into living quarters:	yes/no	Yes/7
Other:	No.	10
Alarms at:		
Driller's console (audible/visual/both):		Both
Engine room (audible/visual/both):		Both
Mud room (audible/visual/both):		Both
Living quarters each level (audible/visual/both):		Both
Central area each structural level (audible/visual/both):		Both
Other:		Life Boat Station
Tied to general alarm:	yes/no	Yes
Central control panel:	yes/no	Yes
Located at:		Radio Room & Jacking Control Room
Local alarm (audible/visual/both):		Both



# IADC Specification

## CP-300 SELF-ELEVATING DRILLING UNIT

### L.2.3 H2S Detectors (Portable)

None

Quantity:	no.	-
Make/type:		-
Quantity:	no.	-
Make/type:		-
Stain types for H2S: measuring range:		-
from 1 to 20 percent:	%	-
from 5 to 60 percent:	%	-

### L.2.4 Explosimeters

None

Quantity:	no.	-
Make/type:		-

### L.2.5 CO2 Gas Detectors (portable)

Quantity:	no.	None
Make/type:		None
Stain tubes for CO2: measuring range		None
from 1 to 20 percent:	%	None
from 5 to 60 percent:	%	None

### L.2.6 O2 Meter (portable)

None

Quantity:	no.	-
Make/type:		-

### L.2.7 Fire/Smoke Detectors in Accommodation

Make/type:		ROCKWELL
Fire detection:	yes/no	Yes/6
Smoke detection:	yes/no	Yes/99
Central control panel:	yes/no	Yes/1
Location:		Jacking Control Room
Alarms at:		
Pull boxes:	no.	None
Mud room (audible/visual/both):		Both
Living quarters each level (audible/visual/both)		Both
Central area structural level:		
(audible/visual/both):		Both
Other:		-
Tied to general alarm:	yes/no	Yes
Central control panel:		Yes
Located at:		Radio Room & Jacking Control Room
Local alarm (audible/visual/both):		Both

## L.3 FIRE FIGHTING EQUIPMENT

### L.3.1 Fire Pumps

Quantity:	no.	2
Make/model:		Zhen Hua 125CLZ-8
Type:		Elec. Driver, vertical, self priming



# IADC Specification

## CP-300 SELF-ELEVATING DRILLING UNIT

Output (each):	gals/min	160 (each)
Working pressure:	MPa	0.7
Location:		pump room
All off-take points supplied by all pumps:	yes/no	Yes
<b>L.3.2 Hydrants and Hoses</b>		
Hydrants positioned such that any point may be reached	yes/no	Yes
by a single hose length from two separate hydrants:		
Quantity of hydrants:	no.	38
Hose connections/hydrant:	no.	Storz
Hose. max. diameter:	in	2.5
Length:	ft	49 – 65
<b>L.3.3 Portable Fire Extinguishers</b>		
Quantity (total):	no.	72
Type 1 -CO2	no./kg	37 / 7
	no./lbs	-
	no./lbs	-
Type 2 -Dry chemical	no./kg	10/ 5
	no./lbs	-
	no./lbs	-
Type 3 -Foam	no./L	25/9
	no./L	25/9
Type 4- Trolley type foam	no./L	4/45
	no./L	25/9
Water	no./lbs	None
	no./lbs	-
Halon	no./lbs	None
Dry powder		-
<b>L.3.4 Fire Blankets</b>		
Quantity:	no.	-
Location(s):		-
<b>L.3.5 Fixed Foam System</b>		
		None
Make/type:		-
Quantity of foam concentrate stored:	gal	-
Foam type:		-
Application rate:	gals/min	-
Foam nozzles:	no.	-
Located at:		-
Located at:		-
Located at:		-
Automatically injected into fixed fire water system:	yes/no	-
Make/type:		-
Quantity of foam concentrate stored:	gal	-
Foam type: Application rate:	U.S. gals/min	-
Foam nozzles:	no.	-
Located at:		-
Located at:		-



# IADC Specification

## CP-300 SELF-ELEVATING DRILLING UNIT

Located at: -  
 Automatically injected into fixed fire water system:      yes/no      -

### L.3.6 Helideck Foam System

Make/type: Nanjing Xiaofang PHYM32/1.0  
 Quantity of monitors:      no.      2  
 Quantity of foam concentrated stored: gal      1000  
 Foam type: AFFF  
 Application rate:      gals/min      4-32

### L.3.7 Fixed Fire Extinguishing System

Protected spaces: Paint store -SCR –E/R – Em'cy Generator  
 room-mud pump room, mud pit room

Engine room, type (Halon/CO2/other): CO2  
 Remote manual release located at: CO2 room  
 Paint locker, type (Halon/CO2/other): CO2  
 Remote manual release located at: CO2 room  
 Emergency generator type (Halon/CO2/other): CO2  
 Remote manual release located at: CO2 room  
 SCR room type (Halon/CO2/other): CO2  
 Remote manual release located at: CO2 room  
 Mud pump room, type (Halon/CO2/other): CO2  
 Remote manual release located at: CO2 room  
 Mud pit room, type (Halon/CO2/other): CO2  
 Remote manual release located at: CO2 room  
 Alarms \*audible, visual, or both): Both  
 Automatic shutdown of ventilation fans  
 in protected spaces:      yes/no      No

### L.3.8 Manual Water Deluge System      yes/no      No

Protected spaced: -  
 Protected spaced: -  
 Water supplied from fire main line:      yes/no      -

### L.3.9 Water Sprinkler System in Accommodation      None

Automatic activation:      yes/no      -  
 Working pressure:      psi      -  
 Tank capacity:      gal      -  
 Salt water backup:      yes/no      -  
 Type (wet pipe/dry pipe)      -

## L.4 BREATHING APPARATUS

### L.4.1 General Sets

Quantity:      no.      -  
 Make      -  
 Type (demand/positive pressure):      -  
 Cascade system quick connects:      yes/no      -  
 Cylinder duration:      min      -  
 Located at:      qty/loc      -



# IADC Specification

## CP-300 SELF-ELEVATING DRILLING UNIT

Located at:	qty/loc	-
Located at:	qty/loc	-
Located at:	qty/loc	-
Located at:	qty/loc	-
Located at:	qty/loc	-

### L.4.2 Escape Sets

Quantity:	no.	-
Make		-
Type (demand/positive pressure):		-
Cascade system quick connects:	yes/no	-
Cylinder duration:	min	-
Located at:	qty/loc	-
Located at:	qty/loc	-

### L.4.3 Cascade Stations

Quantity:	no.	Supplied by operator
Make/type:		-
Manifold locations/outlets at location:		-
Manifold locations/outlets at location:		-
Manifold locations/outlets at location:		-
Manifold locations/outlets at location:		-
Manifold locations/outlets at location:		-
Manifold locations/outlets at location:		-

### L.4.4 Breathing Air Recharge Compressor

Quantity:	no.	Supplied by contractor
Make/type:		-
Compressed air storage capacity:	ft3	-
		-
Working pressure:	psi	-
Located at:		-

### L.4.5 Compressed Air Breathing Apparatus Trolley Unit

		None
Make:		-
Type (demand/positive pressure):		-
Air line length:	ft	-
Compressed air storage capacity:	ft3	-
Working pressure:	psi	-
Including: Face		-
Mask: Demand	yes/no	-
valve:	yes/no	-
Microphone:	yes/no	-
Safety harness:	yes/no	-
Safety line (incorporating telephone line):	yes/no	-

### L.4.6 Breathing Air Purity Test Equipment

		None
Quantity:	no.	-
Make/type:		-

## L.5 EMERGENCY FIRST AID EQUIPMENT



# IADC Specification

## CP-300 SELF-ELEVATING DRILLING UNIT

### L.5.1 First Aid Kits

Quantity: no. 1

### L.5.2 Burn Kits

Quantity: no. -

### L.5.3 Resuscitators

Quantity: no. 1

Charged (spare) oxygen cylinders: no. -

### L.5.4 Stretchers

Quantity: no. 1

Type: foldable

Located at: hospital

## L.6 HELIDECK RESCUE EQUIPMENT

Aircraft Axe: yes/no Yes

Large fireman's rescue axe: yes/no Yes

Crowbar: yes/no Yes

Heavy duty hacksaw: yes/no Yes

Spare blades: yes/no Yes

Grapple hook: yes/no Yes

Length of wire rope attached: m 15

Quick release knife: yes/no Yes

Bolt croppers: yes/no Yes

Fireman's outfit: yes/no Yes

CO2 Lance: yes/no No

Other: -

Other: -

## L.7 EMERGENCY WARNING ALARMS

Approved system to give warning of different emergencies: yes/no Yes

Activated from drill floor: yes/no yes

## L.8 SURVIVAL EQUIPMENT

### L.8.1 Lifeboats

Make/type: BH-9

Quantity: no. 4

Capacity: person/craft 55

Locations (frwd/aft/port/stbd): Port & starboard side 03-deck

Fire protection: yes/no Yes

Radio/EPIRB (see section H.9): NO

### L.8.2 Life rafts

Make/type: HTP-A20

Quantity: no. 6





## IADC Specification CP-300 SELF-ELEVATING DRILLING UNIT

---

Capacity:	person/craft	20
Davit launched:	yes/no	No
Locations (frwd/aft/port/stbd):		Yes
<b>L.8.3 Fast Rescue Boat</b>		1 life boat will be used concurrently
Make/type:		-
Engine power:		-
<b>L.8.4 Personal Flotation Devices</b>		None
Make/type:		-
Quantity:	no.	-
<b>L.8.5 Survival Suits</b>		
Make/type:		-
Quantity:	no.	230
<b>L.8.6 Life Ring Buoys</b>		
Make/type:		NO
Quantity total:	no.	10
with lights:	no.	4
with smoke:	no.	2
with EPIRB:	no.	None
<b>L.8.7 Work Vests</b>		
Quantity:	no.	-
<b>L.8.8 Escape Ladders/Nets</b>		
Make/type:		-
Quantity:	no.	2
Location:		Port and starboard



# IADC Specification

## CP-300 SELF-ELEVATING DRILLING UNIT

---

### M. POLLUTION PREVENTION EQUIPMENT

#### M.1. SEWAGE TREATMENT

Make/model: Nanjing Lvzhou / SWCM-150  
System type: Macerating Pump type.

#### M.2 GARBAGE COMPACTION

Make/model: -  
System type: -

#### M.3 GARBAGE DISPOSAL/GRINDER

Make/model: Sweden/DISPERATOR  
System type: 510MC  
Quantity: no. 1

#### M.4 INCINERATOR

Make/model: -  
System type: -

#### M.5 OILY WATER SEPARATOR

Quantity: no. 1  
Make/model: HEISHIN / HFM-500  
System type: 15 ppm pressure type  
Nominal throughput: gpm 18.3  
Location: Aux. equipment room



# IADC Specification

## CP-300 SELF-ELEVATING DRILLING UNIT

### **N. DRILLING DATA EQUIPMENT**

#### **N.1. COMPUTERS (HARDWARE & SOFTWARE)**

##### **N.1.1 Server System**

Make / System	-
CPU	-
Monitor	-
Harddrive	-
Optical Storage	-
Backup Facility	-
Operating System	-
Software System	-
Misc.	-

##### **N.1.2 Peripherals**

Printers	-
Ethernet link	-

##### **N.1.3 Workstations**

Make / System	-
Monitor	-
Software System	-

##### **N.1.4 ACQUISITION NETWORK**

Drill flow acquisition panel with firmware	-
1 – TBA interface	-
2 – RDA interfaces	-
Mud area acquisition panel with firmware:	-
2 – RDA interfaces	-
Mud logging unit acquisition box;	-
1 – RDA for 8 analog channels	-

##### **SENSORS:**

1 -crown block encoder sensor	Yes
1 -motion compensator encoder sensor	No
1 -slip joint encoder sensor	No
1 -kelly in/out detector	No
1 -hook load	Yes
1 -rotary in/out	No
1 -rotary gear box h/l	No
1 -rotary RPM.	Yes
1 -top drive RPM	yes
1 -rotary torque	yes
1 -top drive torque	yes
1 -stand pipe pressure	yes
1 -choke line pressure	yes
1 -cementing line pressure	Yes, combined in cementing unit



# IADC Specification

## CP-300 SELF-ELEVATING DRILLING UNIT

1 -cementing line pump strokes counter	Yes, combined in cementing unit
1 -mud pump 1-SPM	yes
1 -mud pump 2-SPM	yes
1 -trip tank level	yes
1 -active mud tank level	yes
1 -active reserve mud tank level	yes
1 -reserve mud tank level	yes
1 -treatment mud tank level	No
1 -desilter tank level	No
1 -desander tank level	No
1 -slug tank level	yes
1 -prehydrate tank level	No
1 -sand tank status	No
1 -sand tank No. 2 level	No
1 -deck tank No. 1 level	No
1 -deck tank No. 2 level	No
1 -transfer mix-pump No. 1 On/Off.	No
1 -transfer mix-pump No. 2 On/Off.	No

### N.1.5 Drilling Data Record instrumentation

Quantity	1 set
Make/Type	-
Performance	8 parameters

### SYSTEM DESCRIPTION



# IADC Specification

## CP-300 SELF-ELEVATING DRILLING UNIT

---

### **O. DRAWINGS**

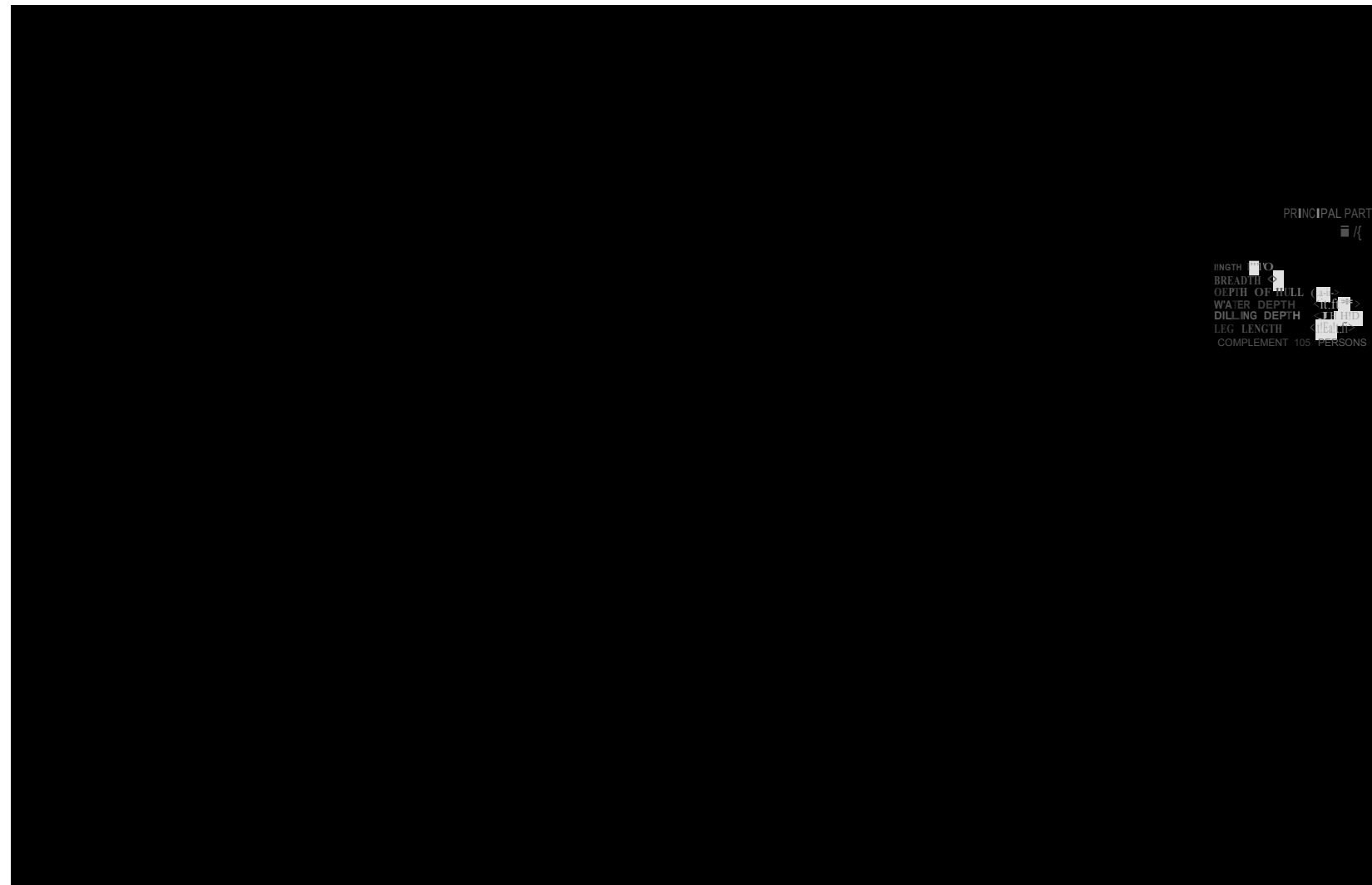
#### **O.1. REFERENCES**

OUTBOARD PROFILE  
GENERAL ARRANGEMENT – INNER BOTTOM TANK ARRANGEMENT  
GENERAL ARRANGEMENT – LOWER MECHINERY DECK (1525 ABL)  
GENERAL ARRANGEMENT – UPPER MECHINERY DECK (4570 ABL)  
GENERAL ARRANGEMENT – MAIN DECK  
TANK CAPACITY PLAN

Note: The CP-300 platform is being built, and will launch at Dec. 2011. This equipment list is preliminary and will be improved in future.

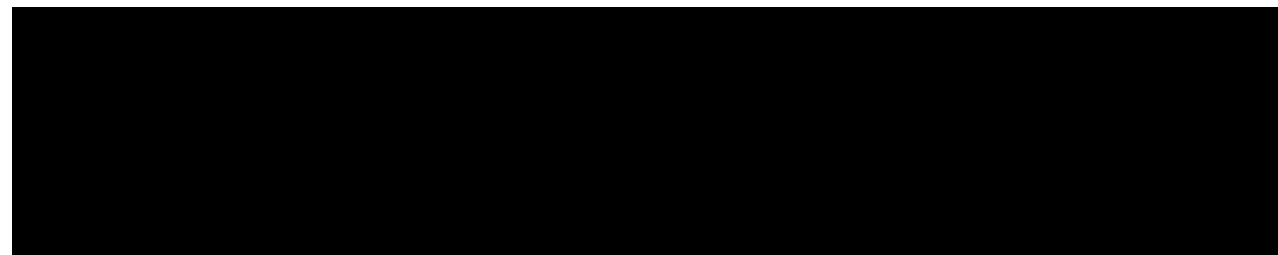


# IADC Specification CP-300 SELF-ELEVATING DRILLING UNIT



PRINCIPAL PARTICULARS

LENGTH	200 ft
BREADTH	55 ft
DEPTH OF HULL	7 ft
WATER DEPTH	10 ft
DILLING DEPTH	10,000 ft
LEG LENGTH	125 ft
COMPLEMENT	105 PERSONS

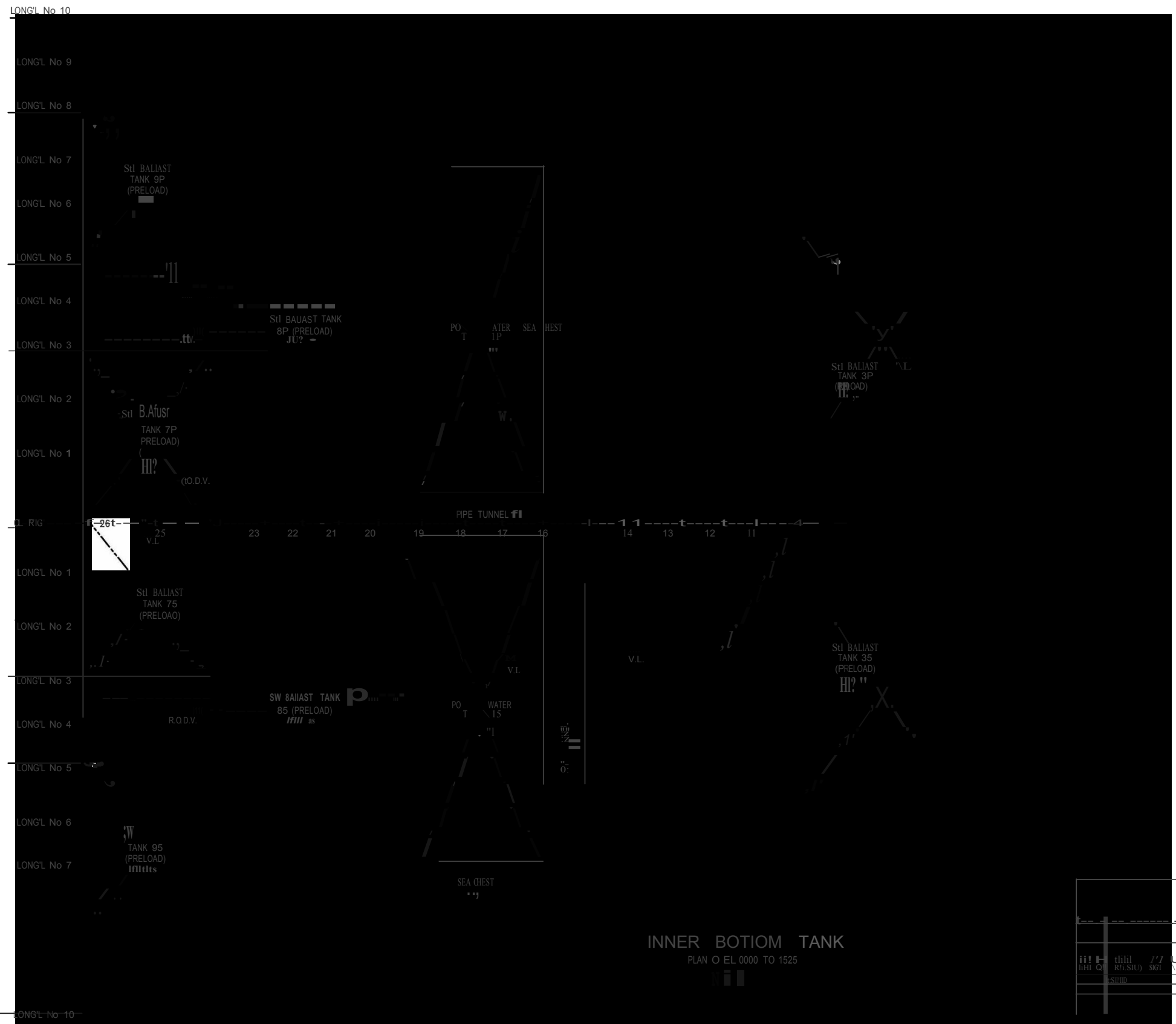


Outboard Profile (19/11/11) D





# IADC Specification CP-300 SELF-ELEVATING DRILLING UNIT





# IADC Specification CP-300 SELF-ELEVATING DRILLING UNIT

LONGL No 10

■  
(5000 SACKS) +  
Jitti

LONGL No 10

## LOWER MACHINERY DECK

PLAN 0 EL 1525 TO 4570  
(SCR ROOM C DECK EL 4570 NOT SHOWN FOR CLARITY)

下机械甲板

---r-11'-300!HDMJt

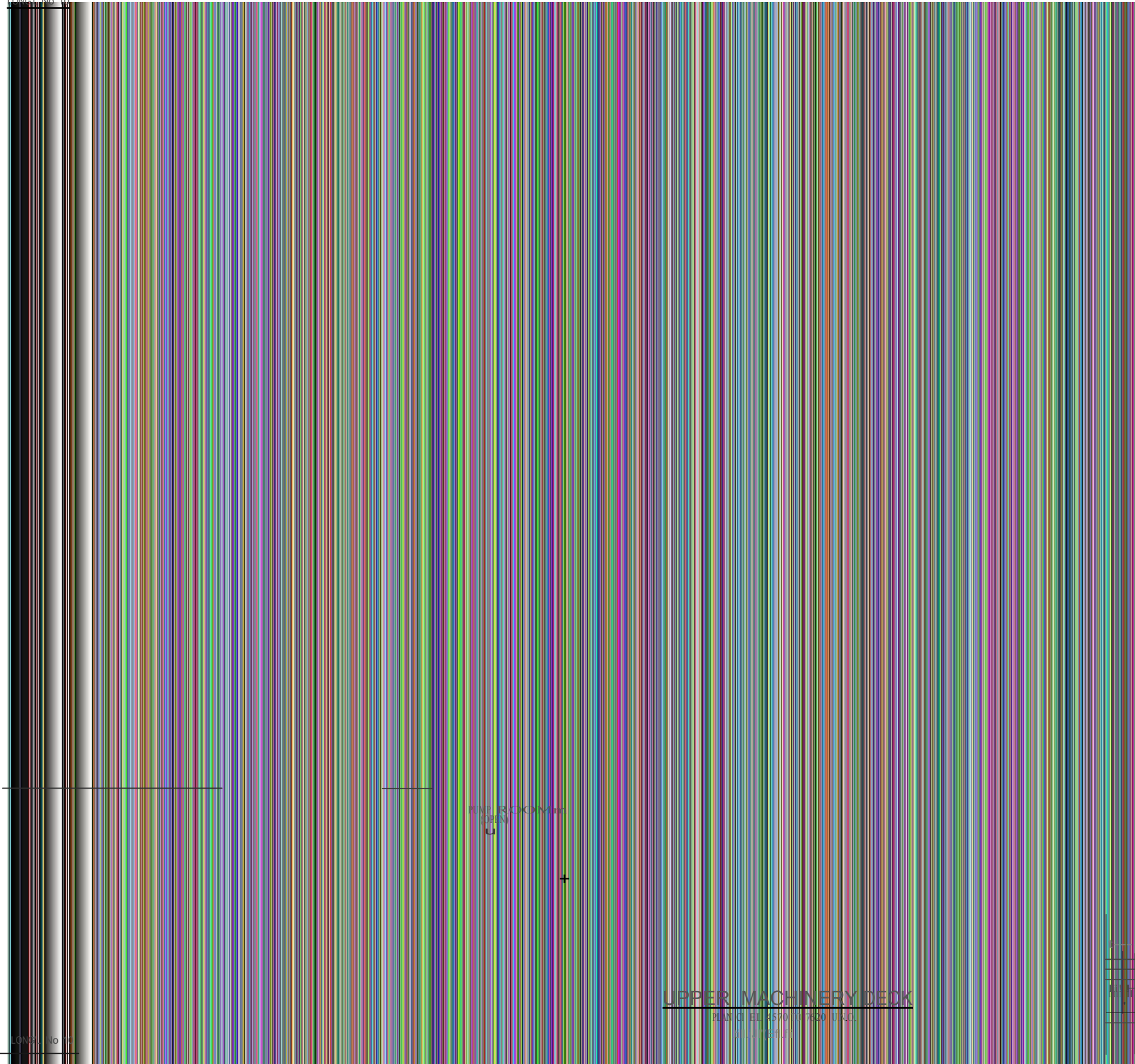
BASIC CIRCUIT





# IADC Specification CP-300 SELF-ELEVATING DRILLING UNIT

LONGI No. 10



WAVE ROOM  
OPEN

+

UPPER MACHINERY DECK

PLAN OF THE 4570 x 7620 U.S.C.

U.S. UNITS

ICB-300 (H)E(I)ATIN; DRILL:100

REVISIONS  
REV. NO. DATE BY

LONGI No. 10

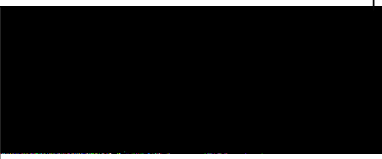


# IADC Specification CP-300 SELF-ELEVATING DRILLING UNIT



PRINCIPAL PARTICULARS  
i R z

LENGTH (ft*)	110.200ft
BREADTH (ft)	46.73ft-183ft
DEPTH OF FULL (M)	7.92ft-272ft
WATER DEPTH (ft)	M-190ft
DILLING DEPTH (ft)	0.00ft-3000ft
LEG LENGTH (ft)	25.3ft-111ft
COMPLEMENT 105 PERSONS	<math>10005 A1</math>





# IADC Specification CP-300 SELF-ELEVATING DRILLING UNIT

SEA WATER BALLAST							
TALUK	(m3)	(811->)	[_ J	(i<PS)			
SW BALLAST 2P							
SW BALLAST 2S							
SW IHUA-1IC	39.6	2.494	406.41	89.97	-32.6	0.000	1310
			394.63	881.98	517.17	-8.594	3.918
SW BALLAST 6CP							
SW BALLAST 6C2	m.4	2739	446.29	983.87	1(04,	5.706	3.903
SW BALLAST 6S	194.7	3112	507J7	1117.87	4U50	-9.257	J.66Z
SW BALLAST 7P	JVS.6	1984	J2JJO	712.04	2+528	21.465	J.810
SW BALLAST 7S	371.6	1984	323.39	712.94	24.526	-23.488	3.810
SW BALLAST 8CP	34.34	1160	Y>189	775.98	11J65	15.712	3.915
SW BALLAST 8C	1150	723	117.88	2511.87	13.467	5.617	0.752
SW BALLAST 9P	11a.0	72J	111.M	131.87	U7	-5.7	0.752
SW BALLAST 9S	3434	2160	35190	775.08	13.365	25.712	1.815
			4911.81	1001.17	3.658	14.75	1.810
	4846	3048	486.6	1051.62	3.658	4.575	3.810
SW BALLAST 10P	497.3	3128	509.73	1123.79	8.320	1.1	3.589
	41.4 S	J.10	50686	1117.42	8300	-11.475	3.601
	VOLUME (m3)	CAPACITY (BBLs)	CAPACITY (MT)	CAPACITY (KIPS)	Xg(M)	Yg(M)	Zg(M)
SW BALLAST 11P	235.0	1478	312.58	686.52	4.085	24.857	J.814
SW BALLAST 11S	3360	1473	4G.88	5JLOJ	4.085	-10.57	3A14
TOTAL	31278	41575	7101.10	1565UB	21J144	000J	3725

DRILL WATER							
TALUK	VOLUME (m3)	CAPACITY (BBLs)	CAPACITY (MT)	CAPACITY (KIPS)	Xg(M)	Yg(M)	Zg(M)
DRILLWATER 1C							
	315.5	18M			24-526	-2.4-66	3.810
DRILLWATER 6P	343.4	2160	3814	7117.05	13.365	2.5712	1.915
DIESEL OIL SETTLING TANK	1055.4	U1a	1081	212.611	J1.5.94	LIST	3.1H

DIESEL OIL							
TALUK	VOLUME (m3)	CAPACITY (BBLs)	CAPACITY (MT)	CAPACITY (KIPS)	Xg(M)	Yg(M)	Zg(M)
ENERGY DIESEL OIL TANK	302.1	1600	257.11	585.11	35.707	ME27	0.762
DIESEL OIL TANK 12P	11.11	1900	357.00	791.11	11.707	8.927	0.762
DIESEL OIL TANK 12S	14.4	91	12.25	27.02	24.135	0.000	5.615
DIESEL OIL TANK 13P	8.9	11	7.57	16.70	12.347	-2.135	0.762
DIESEL OIL TANK 13S	0M J	4116	666.81	122.754	32.666	0.012	1.021

POTABLE WATER							
TALUK	VOLUME (m3)	CAPACITY (BBLs)	CAPACITY (MT)	CAPACITY (KIPS)	Xg(M)	Yg(M)	Zg(M)
GLUCING PIT 13C	190.2	1196	190.2	41831	22.340	10.450	0.762
POTABLE WATER TIT	190.2	1196	190.2	41931	22.340	10.451	0.782
POTABLE WATER TIS	380.4	2392	380.4	83762	22.340	0.000	0.762

DRILLING MUD							
TALUK	VOLUME (m3)	CAPACITY (BBLs)	CAPACITY (MT)	CAPACITY (KIPS)	Xg(M)	Yg(M)	Zg(M)
MUD PIT 4JP	80.6	4507	173.55	383.28	3.132	2.221	3.278
MUD PIT 4JS	80.6	4507	173.55	383.28	3.132	2.221	3.278
MUD PIT 14P	971	611	209.4	461.74	37.005	6.70	3.278
MUD PIT 14S	971	611	209.4	461.74	37.005	6.70	3.278
MUD PIT 15P	135.2	801	291.63	642.92	36.763	12.620	3.278
MUD PIT 15S	135.2	801	291.63	642.92	36.763	12.620	3.278
MUD PIT 16P	634.4	3992	1368.13	3014.7	36.902	0.000	12.3e
MUD PIT 16S	634.4	3992	1368.13	3014.7	36.902	0.000	12.3e

BASE OIL TANK							
TALUK	VOLUME (m3)	CAPACITY (BBLs)	CAPACITY (MT)	CAPACITY (KIPS)	Xg(M)	Yg(M)	Zg(M)
BASE OIL TANK 4S	1074	578	206.21	454.61	36.420	17.344	3.810
BASE OIL TANK 4P	1074	578	206.21	454.61	36.420	17.344	3.810

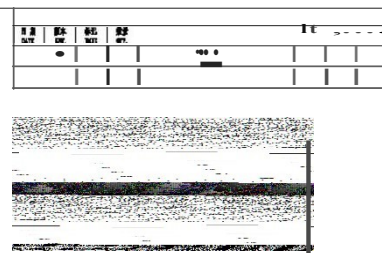
BILGE HOLDING TANK							
TALUK	VOLUME (m3)	CAPACITY (BBLs)	CAPACITY (MT)	CAPACITY (KIPS)	Xg(M)	Yg(M)	Zg(M)
BILGE HOLDING TANK 4P	18.0	111	18.0	40.18	10.670	2.115	0.7152

P-TANKS							
P-TANK	VOLUME (m3)	CAPACITY (BBLs)	CAPACITY (MT)	CAPACITY (KIPS)	Xg(M)	Yg(M)	Zg(M)
P-TANK 1 (BARITE)	68	428	1496	329.81			
P-TANK 1 (BUOWHITE)	68	428	1496	329.81			
P-TANK 1 (BARITE)	68	428	1496	329.81			
P-TANK 1 (BUOWHITE)	68	428	1496	329.81			

P-TANKS							
P-TANK	VOLUME (m3)	CAPACITY (BBLs)	CAPACITY (MT)	CAPACITY (KIPS)	Xg(M)	Yg(M)	Zg(M)
P-TANK 1 (BARITE)	68	428	1496	329.81			
P-TANK 1 (BUOWHITE)	68	428	1496	329.81			
P-TANK 1 (BARITE)	68	428	1496	329.81			
P-TANK 1 (BUOWHITE)	68	428	1496	329.81			

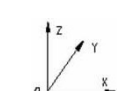
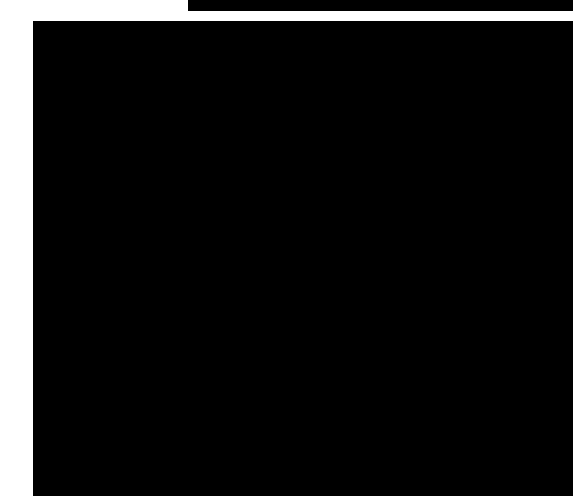
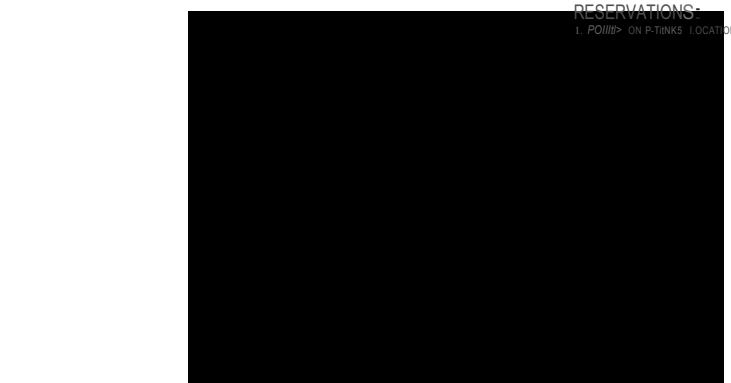
P-TANK 1 (BARITE) 68 428 1496 329.81 39.615 3.018 11.62  
 P-TANK 1 (BUOWHITE) 68 428 1496 329.81 39.615 3.018 11.62  
 TOTAL 136 856 2992 659.62 79.23 6.036 23.24

P-TANK 1 (BARITE) 68 428 1496 329.81 39.615 3.018 11.62  
 P-TANK 1 (BUOWHITE) 68 428 1496 329.81 39.615 3.018 11.62  
 TOTAL 136 856 2992 659.62 79.23 6.036 23.24



### CONVERSION FACTORS

### RESERVATIONS



序号	代号	名称	材料	数量	备注



# IADC Specification CP-300 SELF-ELEVATING DRILLING UNIT



## IADC Specification CP-300 SELF-ELEVATING DRILLING UNIT

---