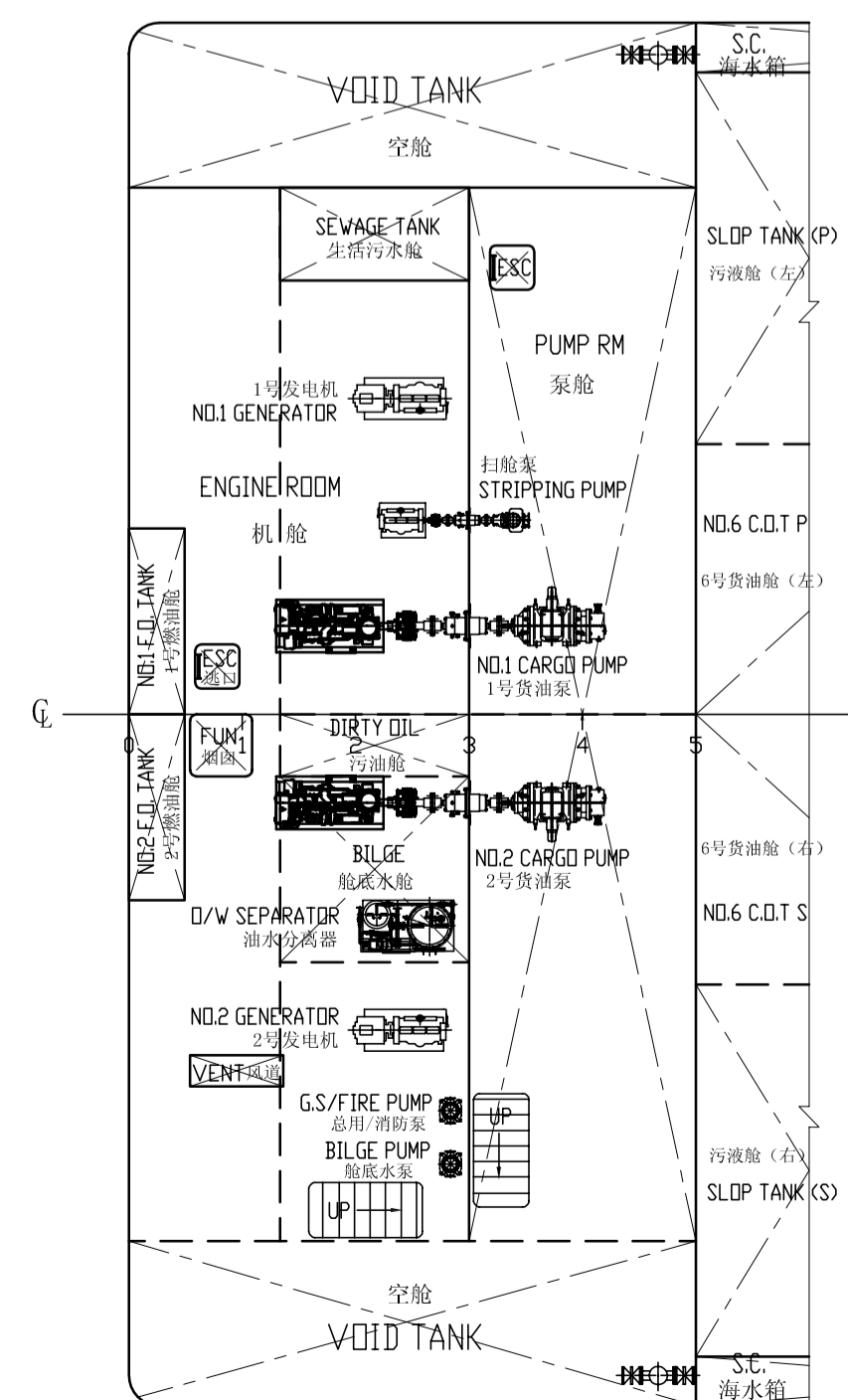
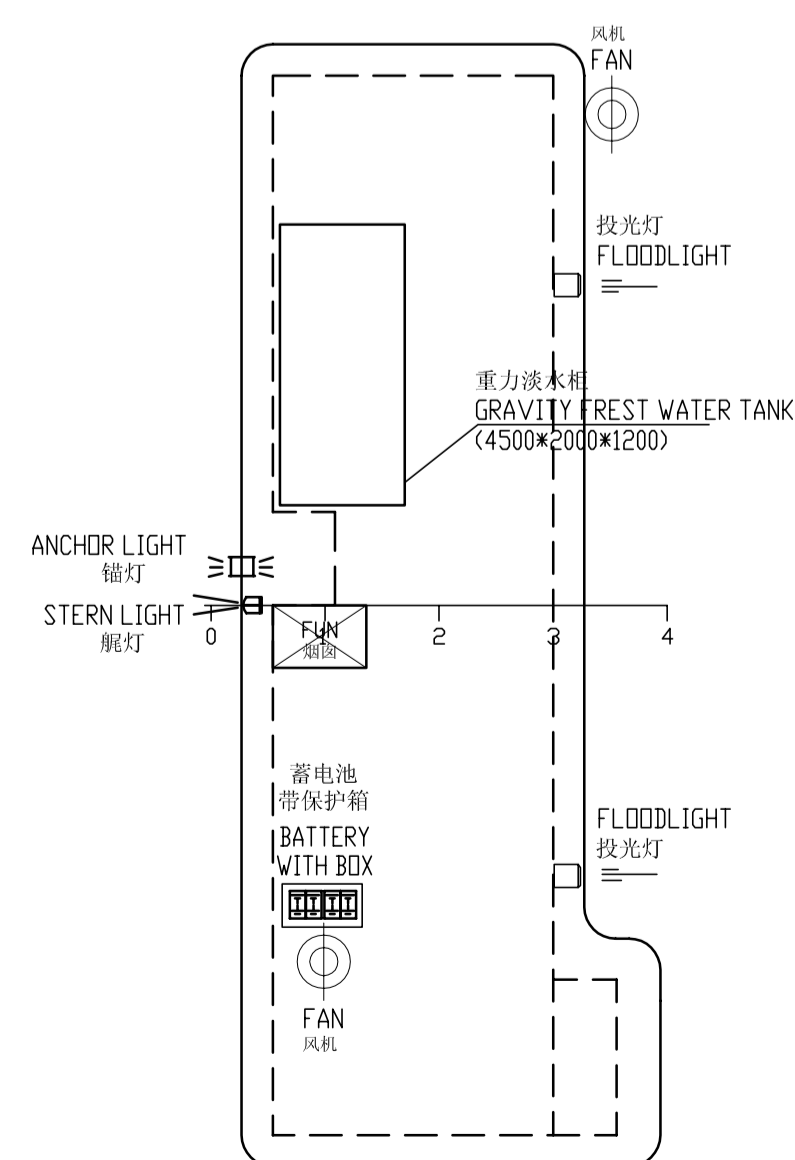


BUREAU VERITAS Section 25074G/75H  
 VU  
 Shanghai, 24-May-2013  
 [Electronic document]  
 The plan approval office

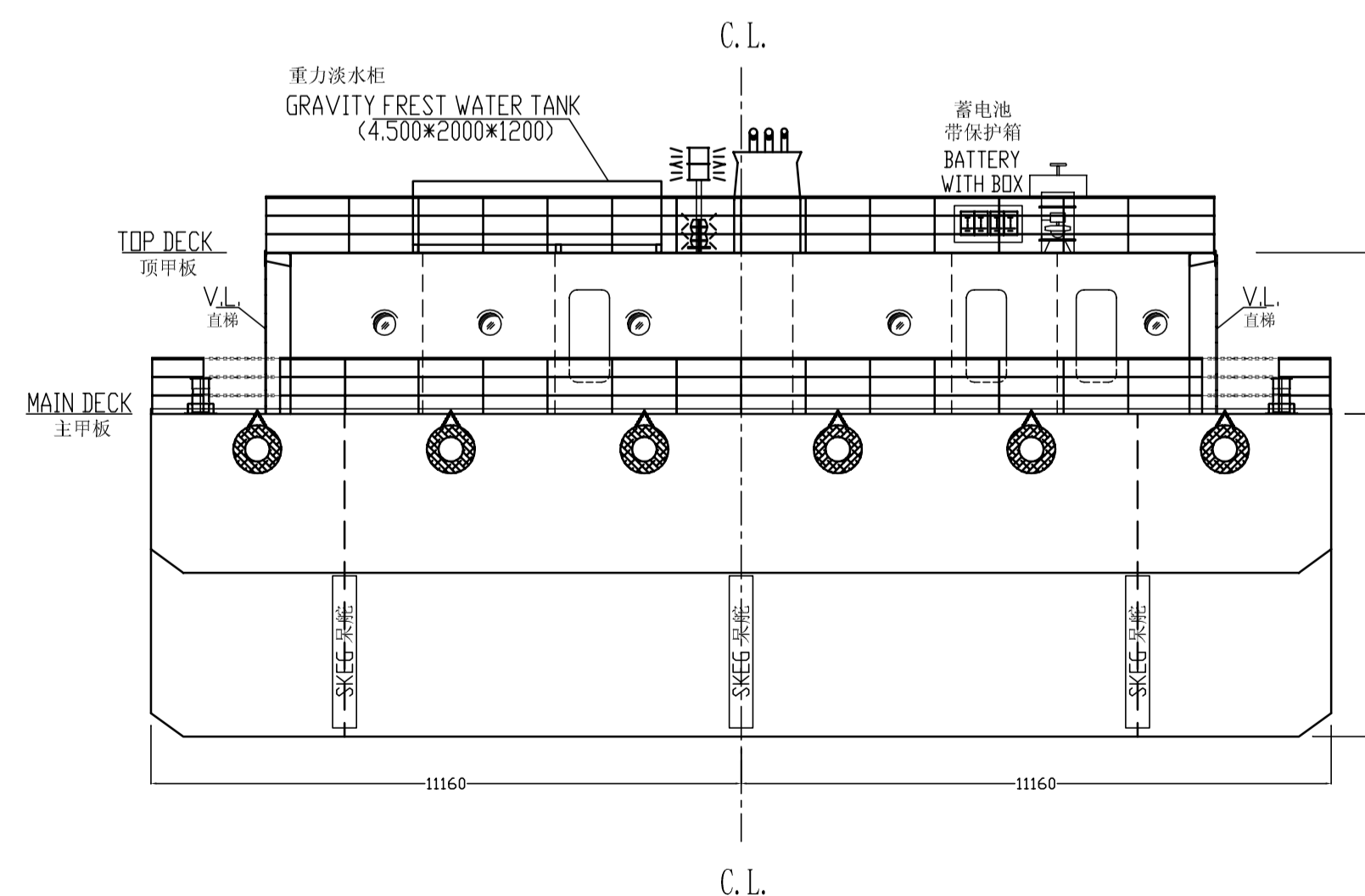
ENGINE/PUMP ROOM PLAN  
 机舱泵舱布置图



DECK HOUSE TOP  
 舱室顶



AFTER VIEW  
 艉视图



PRINCIPAL DIMENSIONS  
 主尺度

LENGTH (O.A.)	76.25 M (250Ft)
总长	
BREADTH (MLD)	22.32 M (73Ft)
型宽	
DEPTH (MLD)	6.10 M (20Ft)
型深	
FRAME SPACE	1.83 M
肋位间距	
DRAFT (MLD)	4.35 M
吃水	
CAPACITY	ABT. 5600m <sup>3</sup> (INCLUDE SLOP TANK)
舱容	
DEADWEIGHT	ABT. 4900T (0.88t/m <sup>3</sup> CARGO DENSITY)
载重吨	

CLASS NOTATION:  
 入级: I \* HULL  
 • MACH  
 OIL BARGE, FLASH POINT > 60° C  
 UNRESTRICTED NAVIGATION  
 UNMANNED

OWNER:	250x73x20FT OIL BARGE	BASIC DESIGN
CLASS:	250x73x20FT 油驳	HULL NO.: HT-73/74
DESIGNED:	GENERAL ARRANGEMENT	DWG NO.: G-100-01
CHECKED:		Page Rev. Scale
APPROVED:		1/1 0 1:120
CHK OF STD.		
VERIFIED:		
VERIFIED:	Builder:	
DATE	25 Apr. 2013	