

12,000DWT Self-Propeller Deck Ship



PRINCIPAL PARTICULARS:

Built	2015.08
Builder	ZHONGCHUAN HEAVY INDUSTRY
Flag	HONGKONG
Classification	CCS , Unrestricted Navigation area
Notation:	★CSA BARGE CARRIER, PSPC(B) IN WATER SUVEY, FTP, BMWP,CLEAN ★CSM DP2 , AUT-0, SCM
IMO No.	

MAIN DIMENSIONS:

Length (O.A)	146.00m
Breadth (M)	28.00m
Breadth (Max)	32.20m
Depth (MID)	8.00m
Designed Draft	5.50m
GRT	9352
NT	2805

CARGO CAPACITIES

Deadweight	12200
Deck load	20Ton/m ²
Deck Space	122m *32.2m/3928.4 Sqm
Fresh water	300 m ³
Fuel capacity	1895m ³
MDO capacity	200m ³

MACHINERY:

Azimuthing Thruster	2x2300kw SRP2020FP SCHOTTEL
Generator	4 x 2310kw MAN 7L27/38
E. Generator	1x 400kw cummins
Bow Thruster	2x1000KW STT4FP SCHOTTEL
DP:	DP2

SPEED & CONSUMPTION:

Maximum Speed	12.5 knots
At sea 22 mt (IFO 180)	At port 1mt (MGO)

Ballast System

Ballast Pump	CLH300-20
Capacity	3x1080m ³ /hx90kwx0.2Mpax970r/min

ACCOMODATION

Crews	21+1
-------	------

RESCUE AND SAFETY EQUIPMENT

2 Life raft x 25 persons each
Life jackets and buoys as per SOLAS regulations

NAVIGATION & RADIO

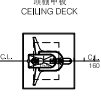
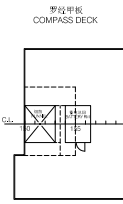
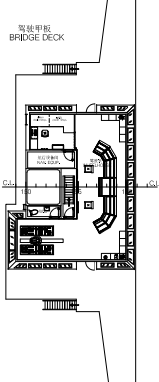
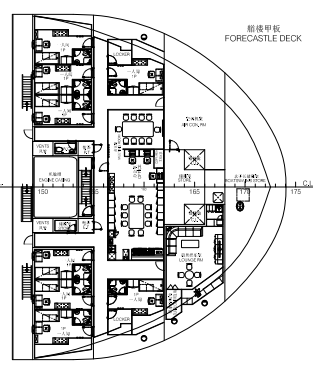
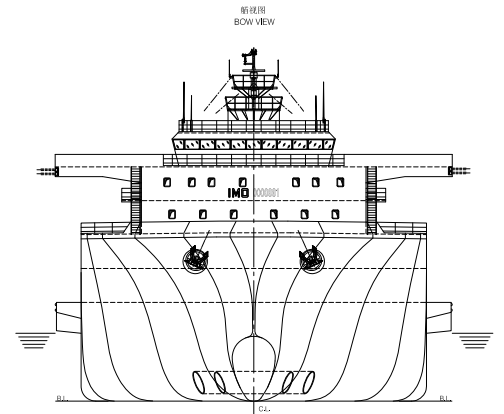
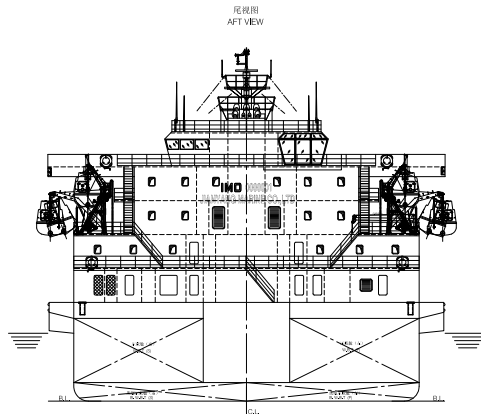
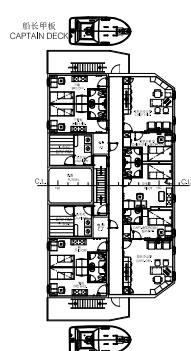
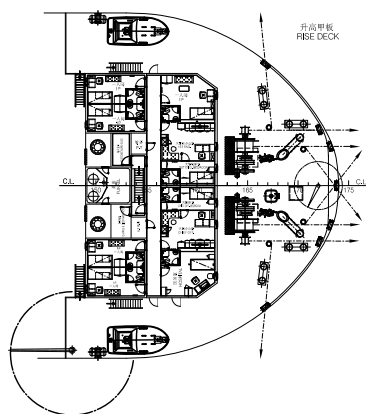
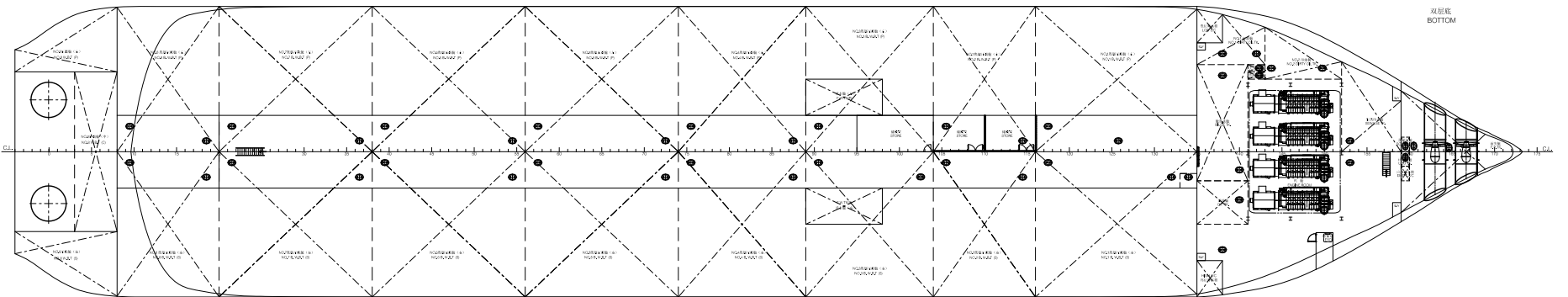
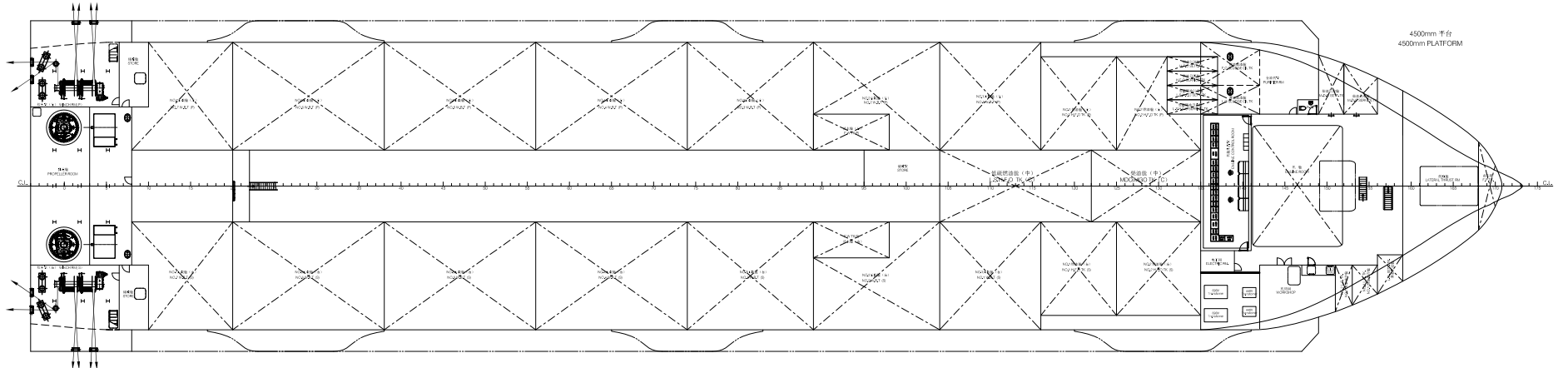
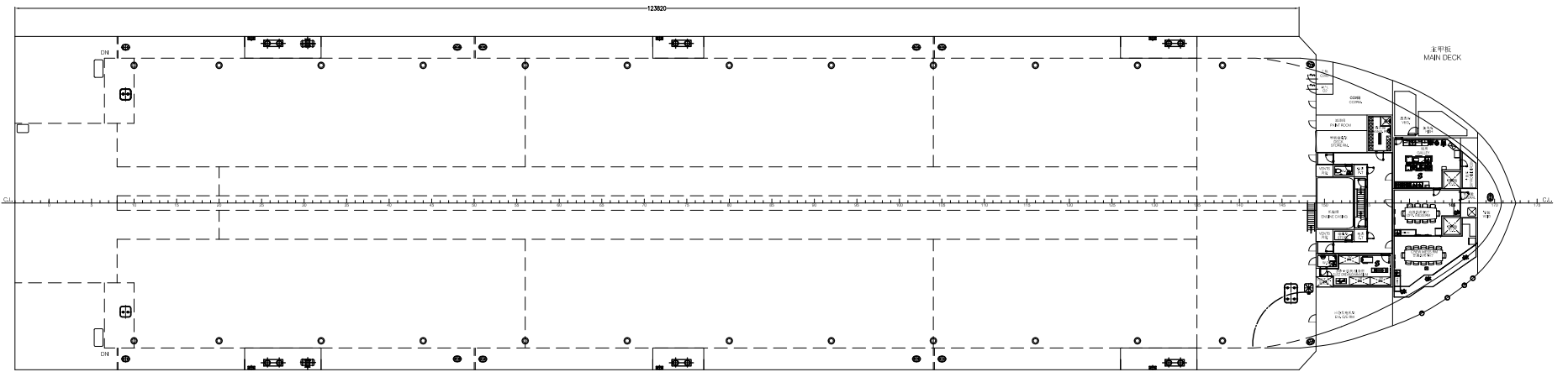
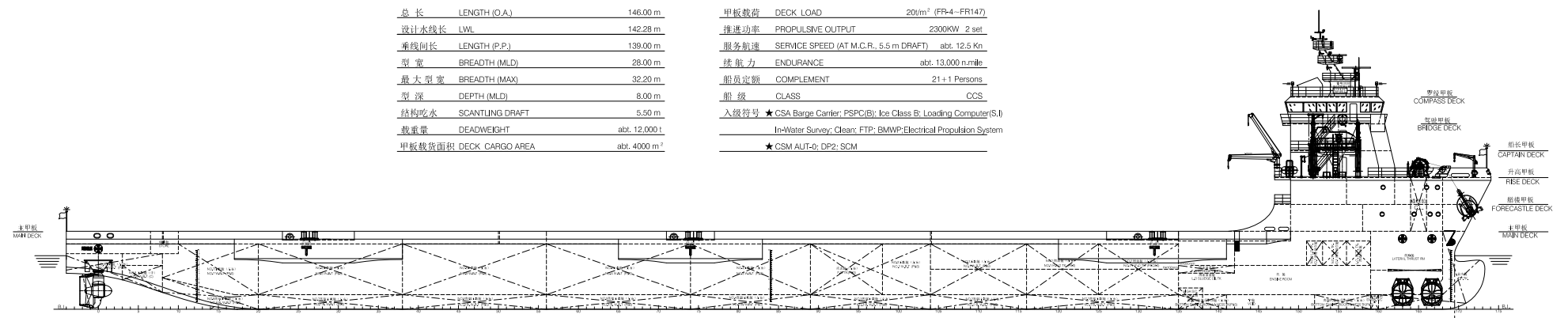
Radar	Furuno FAR -2117 X -band RADAR/ARPA 1 x Furuno Model FAR-2137S S-band ARPA Radar
VHF	3 X SAMYUNG STV-160
Weather fax	TF-708
GMDSS	250W FURUNO RC-1800T with SSB Radiotelephone FS-2570 MF/HF,DSC NBDP WATCH RECEIVER INMARSAT C FELCOM-15 SSAS

Other Navigation Equipment

EPIRB ,Navtex Receiver , GPS,
VDR :HEV-847, DP2 SYSTEM

主要尺度及数据
PRINCIPAL DIMENSIONS

总长 LENGTH (O.A.)	146.00 m	甲板载荷 DECK LOAD	20t/m ² (FR4-FR147)
设计水线长 LWL	142.28 m	推进功率 PROPULSIVE OUTPUT	2300KW 2 set
垂线间长 LENGTH (P.P.)	139.00 m	服务航速 SERVICE SPEED (AT M.C.R., 5.5 m DRAFT)	abt. 12.5 Kn
型宽 BREADTH (MLD)	28.00 m	续航力 ENDURANCE	abt. 13,000 n.mile
最大型宽 BREADTH (MAX)	32.20 m	船员定额 COMPLEMENT	21+1 Persons
型深 DEPTH (MLD)	8.00 m	船级 CLASS	CCS
结构吃水 SCANTLING DRAFT	5.50 m	入级符号 ★ CSA Barge Carrier; PSPC(B); Ice Class B; Loading Computer(S.I)	
载重量 DEADWEIGHT	abt. 12,000 t	In-Water Survey; Clear; FTP; BMWP; Electrical Propulsion System	
甲板载货面积 DECK CARGO AREA	abt. 4000 m ²	★ CSM AUT-2; DP-2; SCM	



2014.05.27	7	根据船东意见修改	徐荣基	王文放	任有林
2014.02.18	6	根据船东及内部意见修改	徐荣基	王文放	任有林
2013.12.02	5	根据船级社审图意见SP13C197-029H和船东船厂会议纪要修改	徐荣基	王文放	任有林
2013.11.08	4	根据内部意见修改	徐荣基	王文放	任有林
2013.10.30	3	根据船东、船厂意见修改	徐荣基	王文放	任有林
2013.09.29	2	根据船东意见修改	徐荣基	王文放	任有林
2013.09.17	1	根据船级社审图意见SP13C197-007H修改	徐荣基	王文放	任有林
DATE 日期	REV 版本	DESCRIPTION 说明	DRAWN 设计 CHECKED 校核 APPROVED 审核		
DETAIL DESIGN 详细设计		146M Multi-Purpose Offshore Carrier 146M 海洋工程大件运输船	DRAWING NO. 图号 ROJ1301-020-003		
OWNER 船东	7 船级社 CCS	GENERAL ARRANGEMENT 总布置图		PAGE 页数 1/1	SCALE 比例 1:300
BUILDER 船厂			RQJ MARINE ENGINEERING CORP. 上海润吉船舶设计有限公司		
DESIGNED 设计 徐荣基	C.V. 会签				
CHECKED 校核 王文放					
VERIFIED 审核					
APPROVED 审批 任有林	DATE 日期	2013.04.28			
		HULL NOS. 船号	ZH130071		
Add: No. 907 Zhongyuan Road, Shanghai 地址: 上海市浦东新区中园路907号 电话: 86-21-51020811/51020812 传真: 86-21-51020813 邮编: 200136					