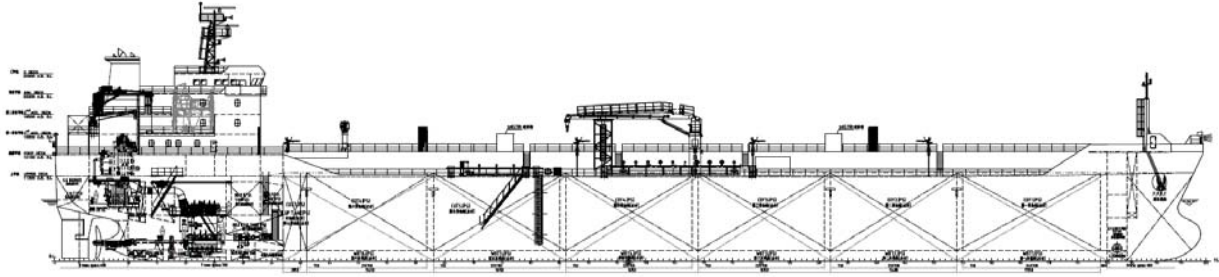


# 13,600DWT SHALLOW DRAFT TANKER



## GENERAL DESCRIPTION

The vessel is a single-screw driven by one (1) set of low speed marine diesel engine for ocean going service with machinery and accommodation located aft, having forecastle and four (4) tiers of deck house. Six (6) pairs of double side skin cargo tanks and one (1) pair of slop tanks are arranged. Longitudinal center bulkhead and transverse bulkheads in cargo section to be arranged corrugated type. Cargo system has three (3) segregations. All cargo/slop tanks are epoxy coated, cargo piping is stainless steel 316L. The ship is capable of carrying oil & Chemical Tanker Type II with flash point  $<60^{\circ}\text{C}$ . Design specific gravity for cargo tanks is  $1.025\text{t/m}^3$ .

## PRINCIPAL PARTICULARS

Loa abt.	139.980 m	DWT <sub>scant</sub>	13,600 T
Lpp	134.370 m	Service speed	Abt.13.0 kn
B	20.20 m	(at $d_{\text{designed}}$ , 90%CMCR, with 15%SM)	
D	11.20 m	Endurance	6,000 n.mile
$d_{\text{designed}}$	7.20 m	Complement	22 P+1 pilot
DWT <sub>design</sub>	11,000 T		
$d_{\text{scantling}}$	8.12 m		

## CAPACITY

Cargo volume incl. slop & residual tanks (100%)	16100 m <sup>3</sup>
Liquid Tank	
F.O.T.	350 m <sup>3</sup>
M.D.O.	80 m <sup>3</sup>
F.W.T.	150 m <sup>3</sup>
W.B.T.	5400 m <sup>3</sup>

## CLASS NOTATION

American Bureau of Shipping (ABS) +A1, Oil Carrier/Chemical Carrier, (E) +AMS, +ACCU, ESP, RRDA, VEC-L, CPS, TCM, PMA, UWILD, IHM, ENVIRO, CRC, POT, MLC-ACCOM, PMP, BWT,

**FLAG:** Singapore or TBA

## MAIN ENGINE

Type:	1x WinGD W5X35-B x1 FPP
CMCR:	3,575 kw x 142 rpm
CSR:	3,217.5 kw x 137.1 rpm(90%CMCR)
M/E FOC	abt. 170.9 g/kw hr Tier II @ CSR
	F.O. 10,200 kcal/kg under ISO

## GENERATOR

Main Generator	3 x 615kW, 900 r/min
	450V, 60 Hz
Emer. Generator	1 x 75kW, 1800 r/min
	450V, 60 Hz

## EQUIPMENT

Cargo Pump	3 sets x 750 m <sup>3</sup> /h	Boiler:	1 x 6 t/h x 7bar. 1 x 1t/h (fuel side)&0.6t/h at CSR load of M/E, steam.
(Twin-screw) 100mlc; Elec. driven.			
Load / Unload	2500/2250m <sup>3</sup> /h Max. total	Hose /bunker boom	1 set x 10t x 15.6m
Ballast Pump	2 sets x 250 m <sup>3</sup> /h	Inert gas system	2900 m <sup>3</sup> /h Flue gas
Bow Thrusters	315 kW	Rudder:	1 set semi- balanced hanging spade