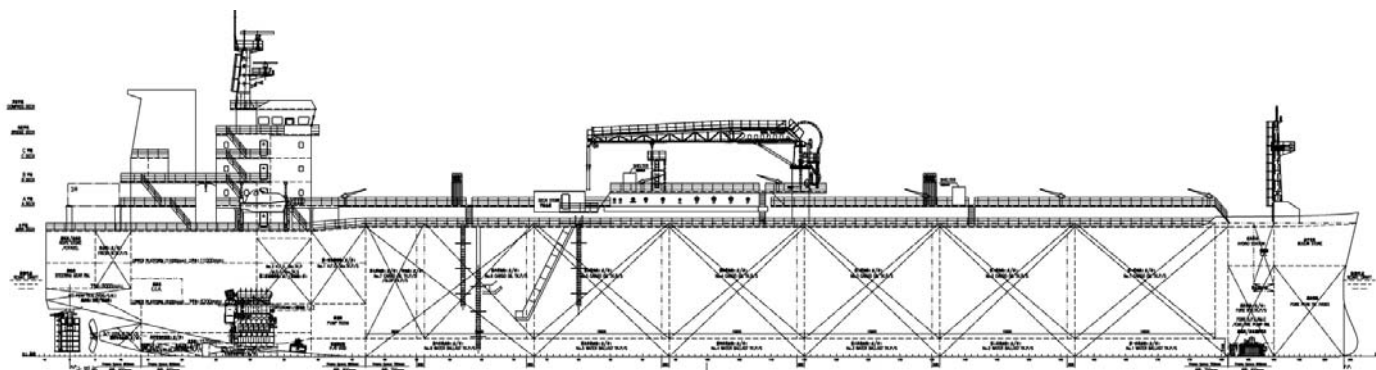


34,000DWT SHALLOW DRAFT TANKER



GENERAL DESCRIPTION

The vessel is a twin-screw driven two (2) sets of low speed marine diesel engines for ocean going service. The vessel is a oil & chemical tanker type III with machinery and accommodation located aft, having forecastle and five (5) tiers of deck house. Six (6) pairs of double side skin cargo tanks and one (1) pair of slop tanks are arranged. Longitudinal center bulkhead and transverse bulkheads in cargo section to be arranged corrugated type. Cargo system has three (3) segregations. All cargo/slop tanks are epoxy coated and all cargo piping materials are 316L. The vessel is capable of carrying oil & chemical type III with flash point <math><60^{\circ}\text{C}</math>. Design specific gravity for cargo tanks is 1.025t/m³.

PRINCIPAL PARTICULARS

Loa abt.	154.31 m	DWT _{scant}	34,000 T
Lpp	149.80 m	Service speed	Abt.14.2 kn
B	36.00 m	(at d _{designed} , 90%CMCR, with 10%SM)	
D	15.20 m	Endurance	8,000 n.mile
d _{designed}	7.00 m	Complement	24 P
DWT _{design}	23,500 T		
d _{scantling}	9.00 m		

CAPACITY

Cargo volume incl. slop & residual tanks (100%)	40729 m ³
Liquid Tank	
F.O.T.	1504.12 m ³
M.D.O.	225.84 m ³
F.W.T.	604.85 m ³
W.B.T.	15930.52 m ³

CLASS NOTATION

American Bureau of Shipping (ABS) +A1, Oil Carrier/Chemical Carrier, E +AMS, +ACCU, ESP, RRDA, VEC-L, CPS, TCM, PMA, UWILD, IHM, ENVIRO, CRC, POT, MLC-ACCOM, PMP, BWT+,CGMV

FLAG: Singapore or TBA

MAIN ENGINE

Type Type 2x WinGD W6X35-B x2 FPP
 CMCR: 5220 kW x 167 r/min(100%MCR)
 CSR: 4698 kW x 161.2r/min (90%MCR)
 M/E FOC abt. 24.3 t/d Tier II @ CSR
 F.O. 10,200 kcal/kg under ISO

GENERATOR

Main Generator 3 x 1050kW, 900 r/min
 450V, 60 Hz
 Emer. Generator 1 x 140kW, 1800 r/min
 450V, 60 Hz

EQUIPMENT

Cargo Pump 3 sets x 1000 m³/h
 (Twin-screw) 100mlc; Elec. driven.
 Load / Unload 3,000/3,000m³/h Max. total
 Ballast Pump 2 sets x 650 m³/h

Pump Jet Thrusters (Bow/Stern) 300/700 kW
 Boiler 1x14.5 t/h x7bar+2x 7 t/h x 7bar,steam.
 Hose /bunker boom 2 set x 15t x 26m
 Inert gas system 3,750 m³/h Flue gas
 Rudder 2 sets Flap rudder