

360P Accommodation Pipe-lay Work Barge

General Description

Official No.	:	
IMO No.	:	
Call Sign	:	
Port of Registry	:	
Class	:	ABS +A1 (M), ACCOMMODATION BARGE, PIPE LAYING,CRC, HAB(WB) GP,ENVIRO,HELDECK,SPS,UWILD
Year Built	:	:2021
Where Built	:	:Suzhou, Jiangsu, China
GT / NT	:	: 14768/4430
Fuel Capacity	:	: 1550m ³ MGO

Machinery and Equipment

Main Generator	:	7 x Caterpillar C32, each 940Kw @ 1800rpm
Emer. Generator	:	1 x Caterpillar C9, 238Kw@1800rpm
Mooring system	:	12 points 100 ton by HTM/East Marine
Mooring anchor	:	each 8MT with Dia 56 Rope 2000 Meters
Mooring winch	:	brake holding 250T
Towing gear	:	Main and emergency system

Main Dimensions

Length (O.A)	:	113.83 m
Breadth (MID)	:	31.70 m
Depth (MID)	:	7.30 m
Operation Draft	:	3.80 m
Deck Load	:	15 T/m ²
Clear Deck Area	:	1250m ² excluding pipe-lay casing
Accommodation	:	360 P

Navigation & Communication Equipment

Marine radar
Echo sounder
GPS
Marine VHF transceiver
CCTV display for 12 mooring winches
Remote control, tension readout, line indication & instrumentation consoles of mooring winches
Satellite compass
Binocular
Search light

Life saving	: 4 x 150P,2 x 60P enclosed lifeboats,tanker type	Navigation lighting panel
Fresh water maker	: 2X80 ton/day, Reverse Osmosis type	Sound powered telephone
Ballast system	: 2 x 500m3/Hr @ 25m head,BWTS 500m3/Hr	Fire and general alarm
Deck crane	: 500MT LIEBHERR pedestal crane, 150MT SCM/TTS pedestal crane, PHC	Fog horn 24VDC emergency switchboard panel

Pipe laying equipment

Designed for a S Lay System with capacity of

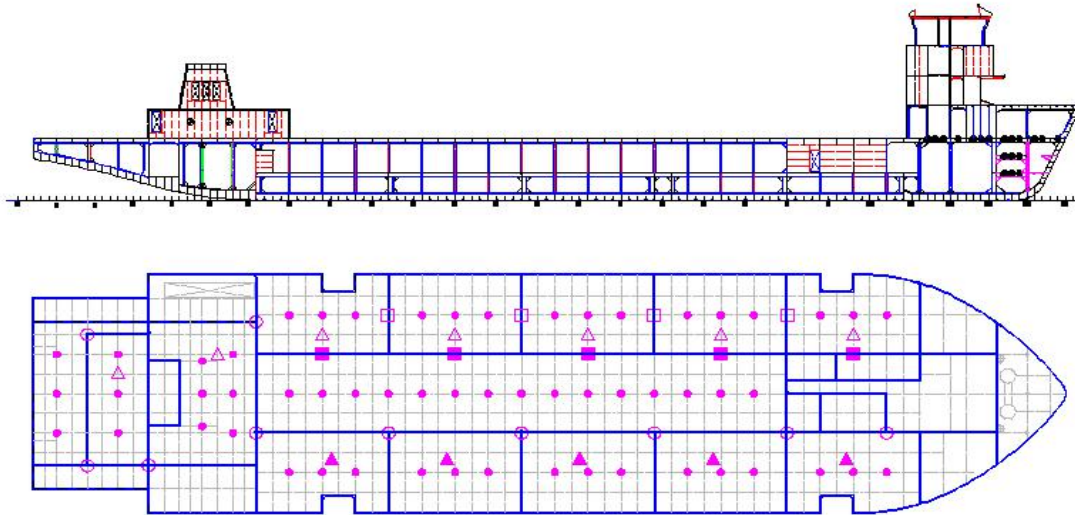
Pipe size : Diameter from 4" to 60"

Tensioners : 2*100 ton

A & R System : SWL 200 ton, rope capacity 1200 m x 64 mm

*** Details are given in good faith and are believed to be correct but not guaranteed**

LOAD DISTRIBUTION : “TONGBAO MERCURY”



MAXIMUM LOADING

10 tonnes/m² Overall deck strength

- Type 1** **300 tonnes/m²**
Area around crossing points of bulkheads
- Type 2** **150 tonnes/m²**
Area around pillars
- Type 3** **250 tonnes/m²**
Area around crossing points of transverse bulkheads and longitudinal deck girders
- Type 4** **200 tonnes/m²**
Area around crossing points of longitudinal bulkheads and transverse beams
- △ Type 5** **90 tonnes/m²**
Area around crossing points of transverse beams and longitudinal deck girders
- ▲ Type 6** **40 tonnes/m²**
Area span two deck longitudinals

*** Details are given in good faith and are believed to be correct but not guaranteed**



TONGBAO [SINGAPORE]
SHIPPING PTE LTD
Singapore 199597
T: 65 6296 9717





F: 65 6294 9990

Reg No. :200305847N

www.tongbaoshipping.com.sg

