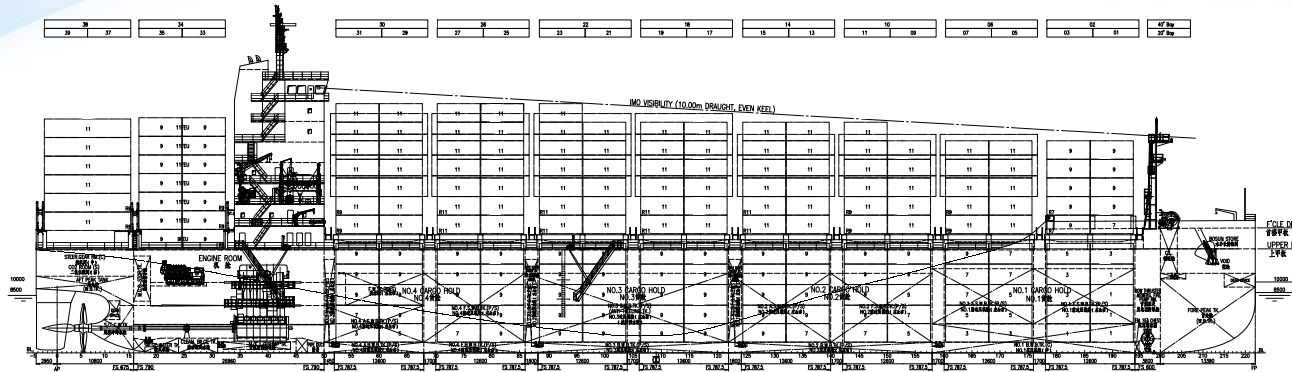


SEALION 1,900

1,900TEU CONTAINER VESSEL



KEY FEATURES

- NOx Tier II compliant
- Containerized dangerous goods of IMDG
- Max clear height in hold based on 3*HC + 2*SD
- Connected HC reefer power 6.0 kW

MAIN PARTICULARS

Length overall	abt.171.95 m
Length between perp.	169.00 m
Breadth moulded	27.50 m
Depth moulded	14.50 m
Design draught	8.50 m
Scantling draught	10.00 m
Air draught	abt. 49.00 m
Deadweight at design draught	17,980 t
Deadweight at scantling draught	23,980 t
Complement	23P
Endurance (CSR, ME+1xAE)	11,000 nm

CARGO CAPACITY AND EQUIPMENT

Container in hold / on deck	590 / 1,310 TEU
Container total	1,900 TEU
Homogeneous 14t/TEU (T=10.0m)	1,280 TEU
Reefer plugs in hold / on deck	0 / 200
Reefer plugs total	200
Hatch covers	Lift-off pontoon type
Stack load on deck 20'/40'	80t/110t
Stack load in hold 20'/40'	30.5t/TEU, 30.5t/FEU
Lashing bridge	1-tier (only at after part)
Cargo gear	Nil

ENERGY EFFICIENCY PARTICULARS

Service speed at design draught (CSR, with 15% sea margin)	19.5 kn
ME fuel oil consumption at CSR (at diesel mode, Based on LCV 42,700 kJ/kg, ISO conditions, excl. engine tolerance)	39.4 t/d
EEDI	phase 3 compliant

TANK CAPACITIES

VLSFO/ULSFO	1,100 m ³
Marine gas oil	200 m ³
Lubricating oil	180 m ³
Fresh water	200 m ³
Water ballast	9,700 m ³

MACHINERY MAIN COMPONENTS

Main engine	MAN B&W 6S60ME-C10.5 Tier II, 1 set
MCR	14,940kW x 105r/min
SMCR	11,500 kW x 105.0 rpm
CSR(90% SMCR)	10,350 kW x 101.4 rpm
Propeller	1 x FPP
Diesel generators	3 x 1,100 kW
Emerg. generator	1 x 180 kW
Bow thruster	1,000 kW

CLASSIFICATION

CCS ★CSA Container Ship; COMPASS(R,D,F); CLC; ECL; SOLAS II-2 Reg.19; PSPC(B); In-Water Survey; Loading computer(S,I) ; Ice Class B
★ CSM AUT-0; SCM; AMPS; G-EP(GPR); G-ECO(BWM(T),CD30)
Or equivalent Class notation

