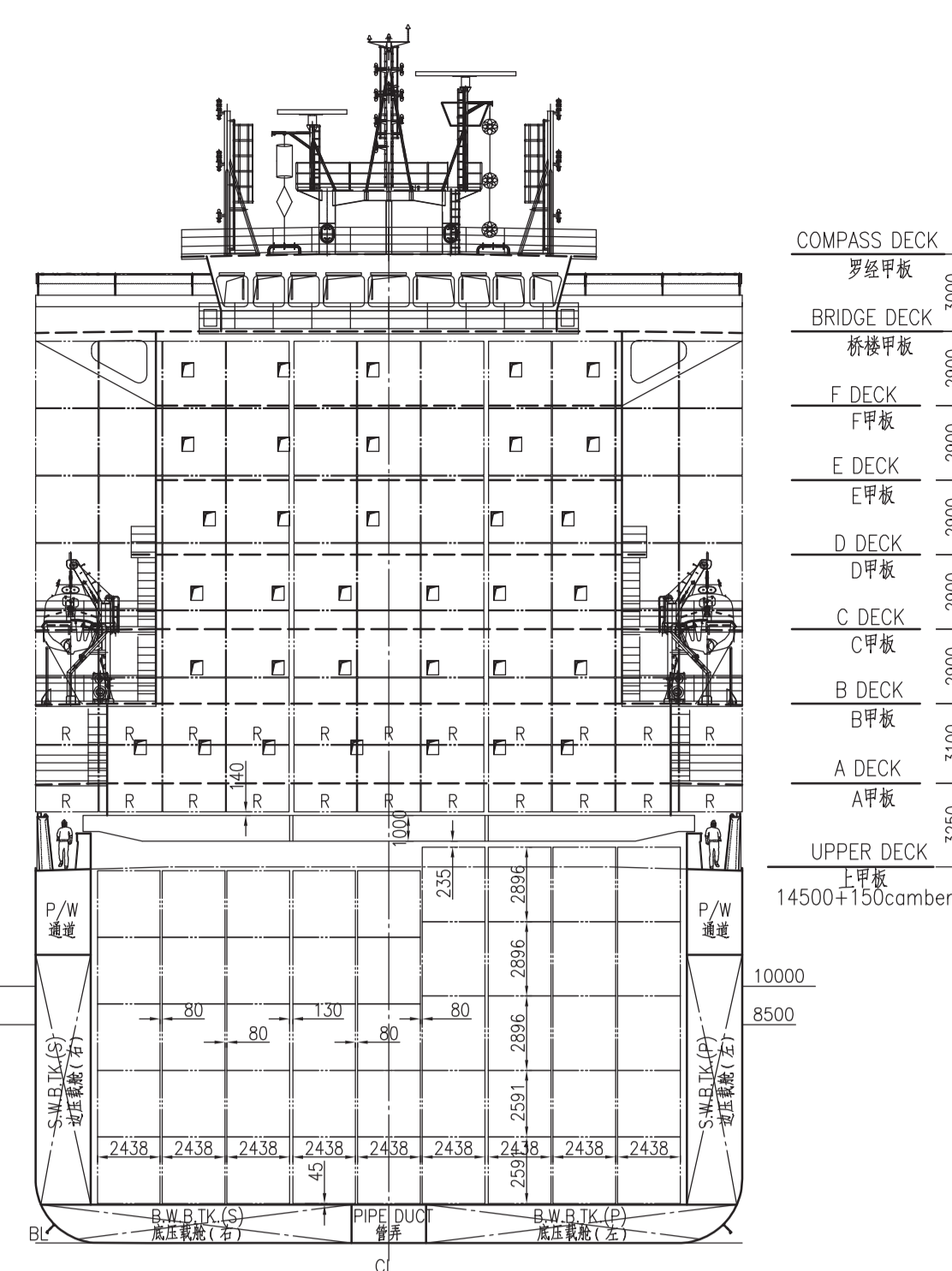


REVISION RECORD	修改记录表	NO.	DATE

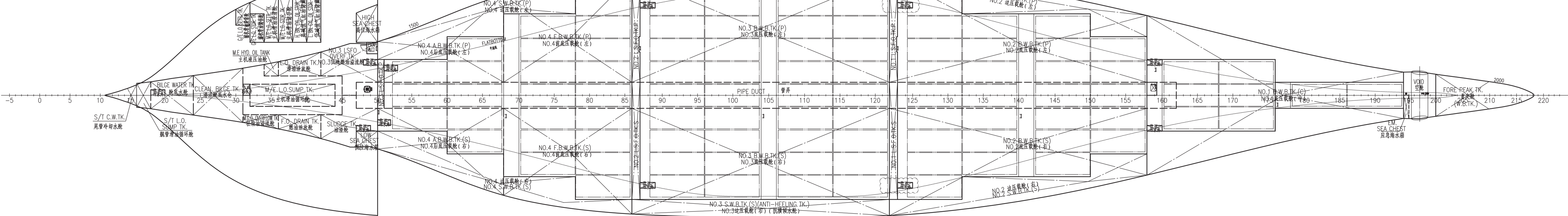
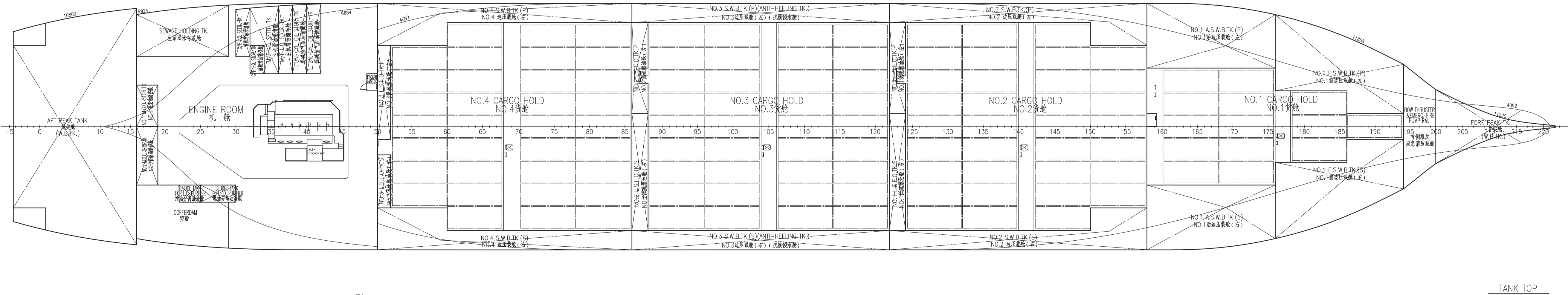
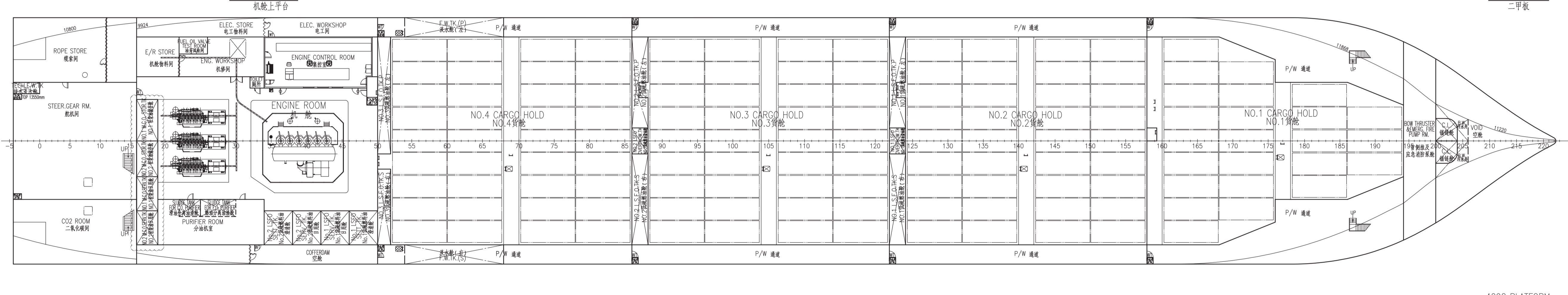
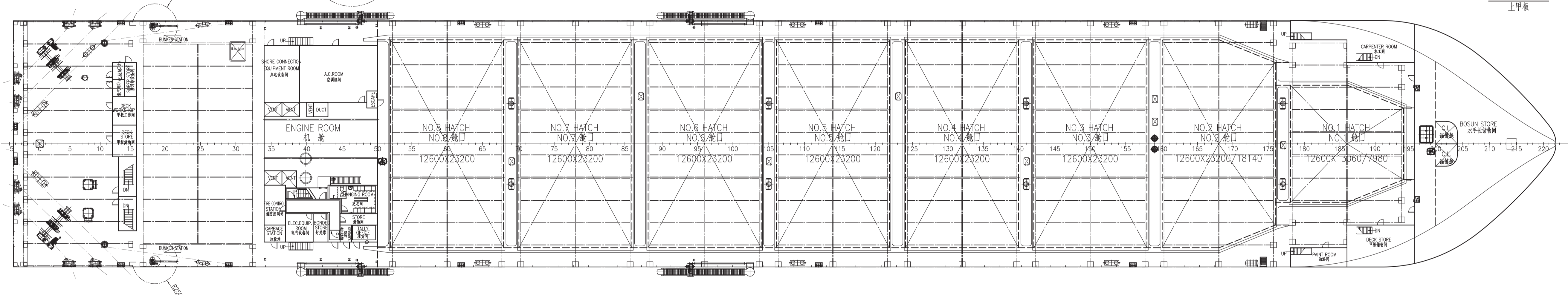
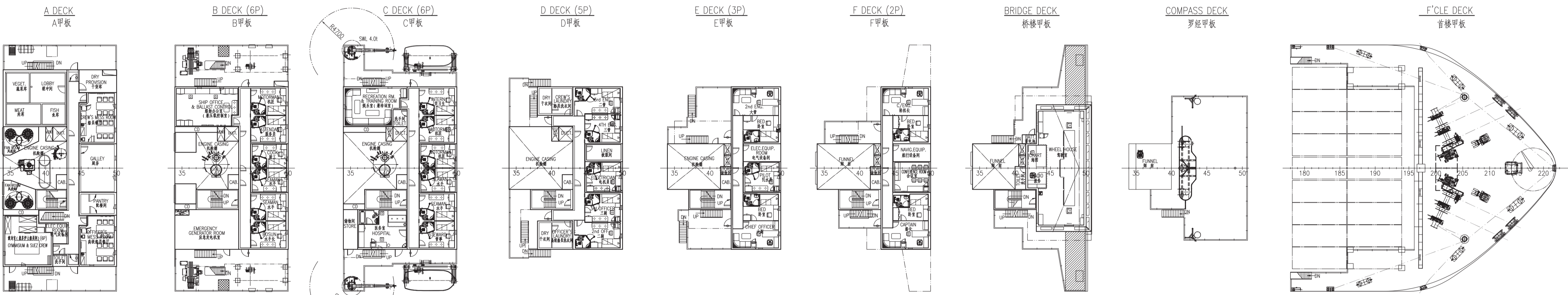
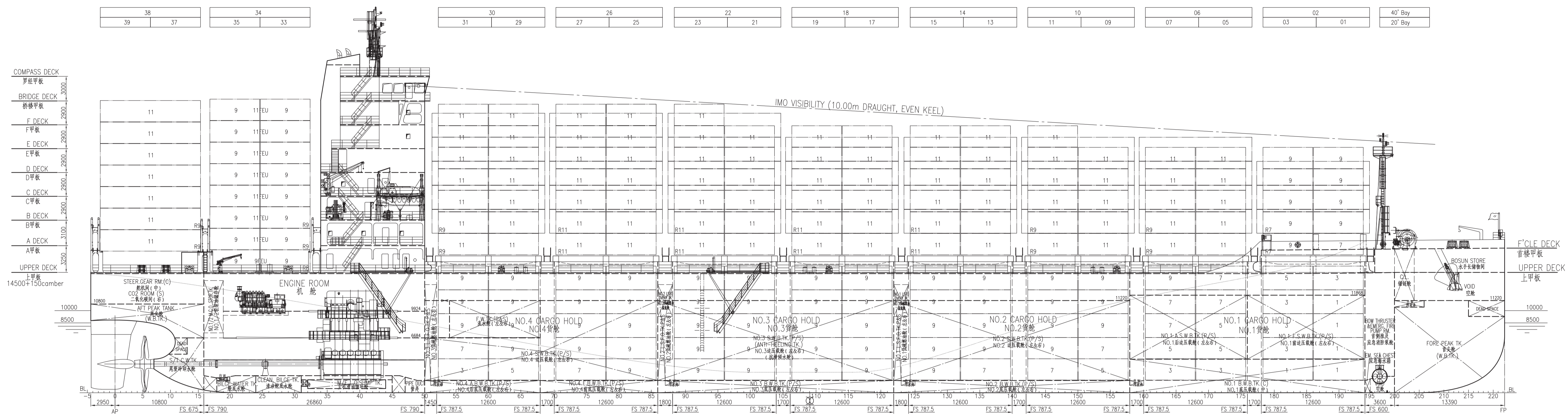


PRINCIPAL PARTICULARS
主要尺度要素

总长 LENGTH O.A.	171.95 m
垂线间长 LENGTH B.P.	169.00 m
型宽 BREADTH MLD.	27.50 m
型深 DEPTH MLD.	14.50 m
吃水 DRAUGHT DESIGN / SCANTLING	8.50 / 10.00 m
集装箱 CONTAINER CAPACITY	1,360 TEU
	ON DECK 1,360 TEU
	IN HOLD 596 TEU
	TOTAL 1,956 TEU
冷藏 REEFER PLUGS	ON DECK 200 TEU
载重量 DEADWEIGHT AT DESIGN DRAUGHT	abt. 17,980 t
载重量 DEADWEIGHT AT SCANTLING DRAUGHT	abt. 23,980 t
主机 MAIN ENGINE	MAN B&W 6S60ME-C10.5 Tier II
	MCR 14,940kW x 105r/min
	SMCR 11,500kW x 105r/min
	NCR(90%SMCR) 10,350kW x 101.4r/min
航速 SERVICE SPEED(AT 8.5m DRAUGHT, NCR, BILG, WITH 15% SEA MARGIN)	abt. 19.5Kn
船级规范 CLASS NOTATION	22 P
	BV 1 + HULL, + MACH, Container ship, unrestricted navigation,
	+ VeriSTAR-HULL, + AUT-UIMS, MON-SHAFT, INWATERSURVEY,
	ICE, CPS(WBT), BWT, LASHING-WW, SAFE-LASHING, CLEANSHIP,
	GREEN PASSPORT EU, LI-HG-S2, HVSC

Pending: The relevant arrangement and calculation of Marpol Reg.12A requirement is to be provided.

Bureau Veritas Marine & Offshore
Section 41861D / 41862E / 41863F / 41864G
VU avec commentaires
Shanghai, 04-Jan-2022
(Electronic document)
The plan approval office



- 符号
- 罗经架
- 罗经
- 动力
- 伴油
- 系统
- 伴油
- 电气

图底图叠记号

DETAIL DESIGN	详细设计	1900TEU CONTAINER VESSEL	SC4929(FY)-100-04
CURRENT REVISION	A	CURRENT STATUS	S
DESIGNED BY	马洪强	DESIGNED DATE	2021.07.26
CHECKED BY	王德安	CHECKED DATE	2021.07.26
REVIEWED BY	王明强	REVIEWED DATE	2021.07.26
APPROVED BY	王峰	APPROVED DATE	2021.07.26
GENERAL ARRANGEMENT PLAN		HULL NO. ML1800TEU-001/002	
总布置图		SCALE: 1:200	