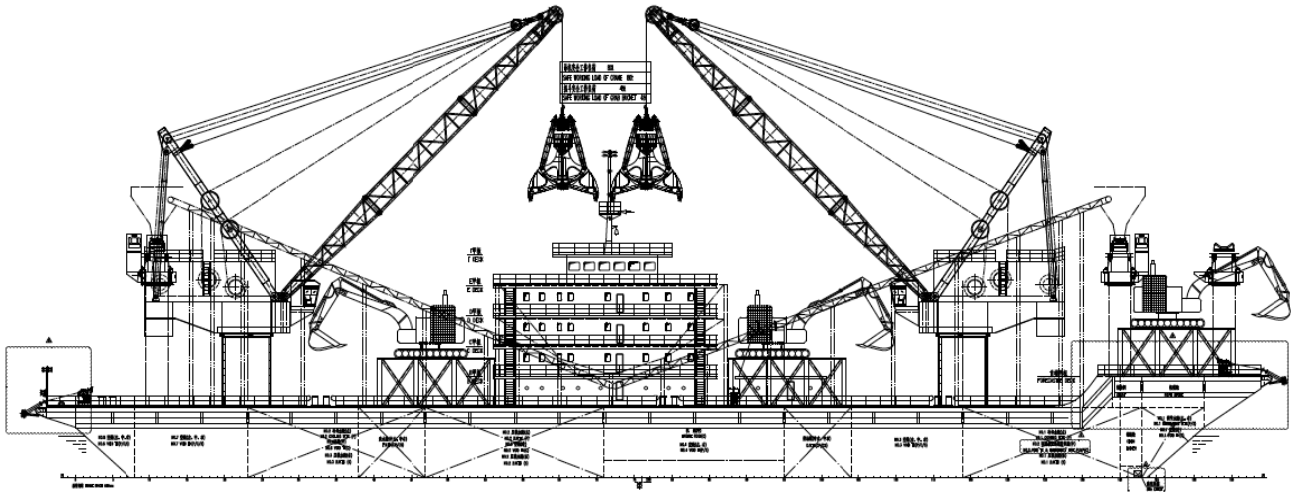


111M PONTOON-CRANE



Technical Specification: 技术规格

This vessel is built for: ship to ship transfer of cargo between the platform, to unload a shipment of goods to another ship.

本船为两船间货物中转的平台，用于将一船货物卸载到另一船上。

This vessel is steel, continuous single-deck, single-bottom, single-shell, head and tail to floor tilt boat unpowered barge.

本船为钢质、连续单甲板、单壳、单底、首尾为倾斜船底板的无动力驳船。

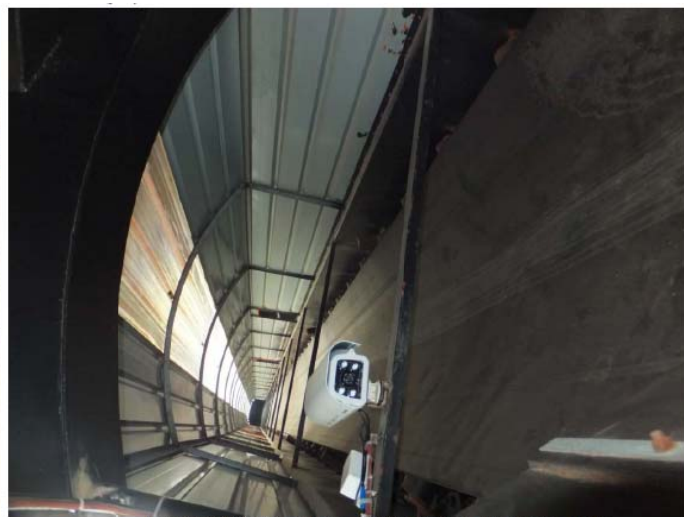
Main Dim. 主尺度	111.0 m * 27.5m *6.0 m (draft: 4.5 m)	Crew 船员	25P
GT/NT 总吨/净吨	5708T/T	Aux . engine 付机	280KW*3& 600KW*1
Class 船级社	RINA	Navigation area 航区	COASTAL
Crane 吊机: 1*40T Crane, 1*10T Crane, 2*80T Grab Crane			

	Capacity 吊力	Turning 旋转	Range 变幅	Applicable to 适用于
Crane 吊机	80T*2	360°	11. 25m-27m	Coal or equipments 运煤或其他设备
	40T*1	360°	3. 7m-20m	Coal or equipments 运煤或其他设备
	10T*1	360°	2. 5m-10m	Debris hanging 杂物吊

	No. 编号	Capacity 传送能力 (T)	Turning 旋转角度	To Horizontal Distance 距水平距离		Extended to Overboard(m) 向舷外延伸
				Lowest(m)最 低	Highest(m) 最高	
Conveyer Belt 传送带	1	3000T	0°	6m	17m	20m
	2	3000T	180°	15m	20m	15m-22m
	3	3000T	180°	15m	20m	15m-22m
	4	3000T	0°	3.5m	15m	15m

柴油机摘要 Description for Diesel Engine	机型 Model	功率 (Kw) Power	柴油 D.O (g/kw.h)	润滑油 L.O (g/kw.h)	柴油机数量 Quantity
传送带原动机	KTA19	373	212	1.2	2
发电机组	N855	290	212	1.2	3
发电机组	ZC6200	600	197		1
停泊发电机组	6BT5.9	80	212	1.2	1
吊机-钢丝绳筒	K38	895	212	1.2	2
吊机-发电机	KTA19	395	212	1.2	2

Delivery Photo:



四条输送带净宽 1 米 6, 输送架净宽 1 米 9 净长 47 米

