

GENERAL- GA & FEATURES

CLASS: DNV

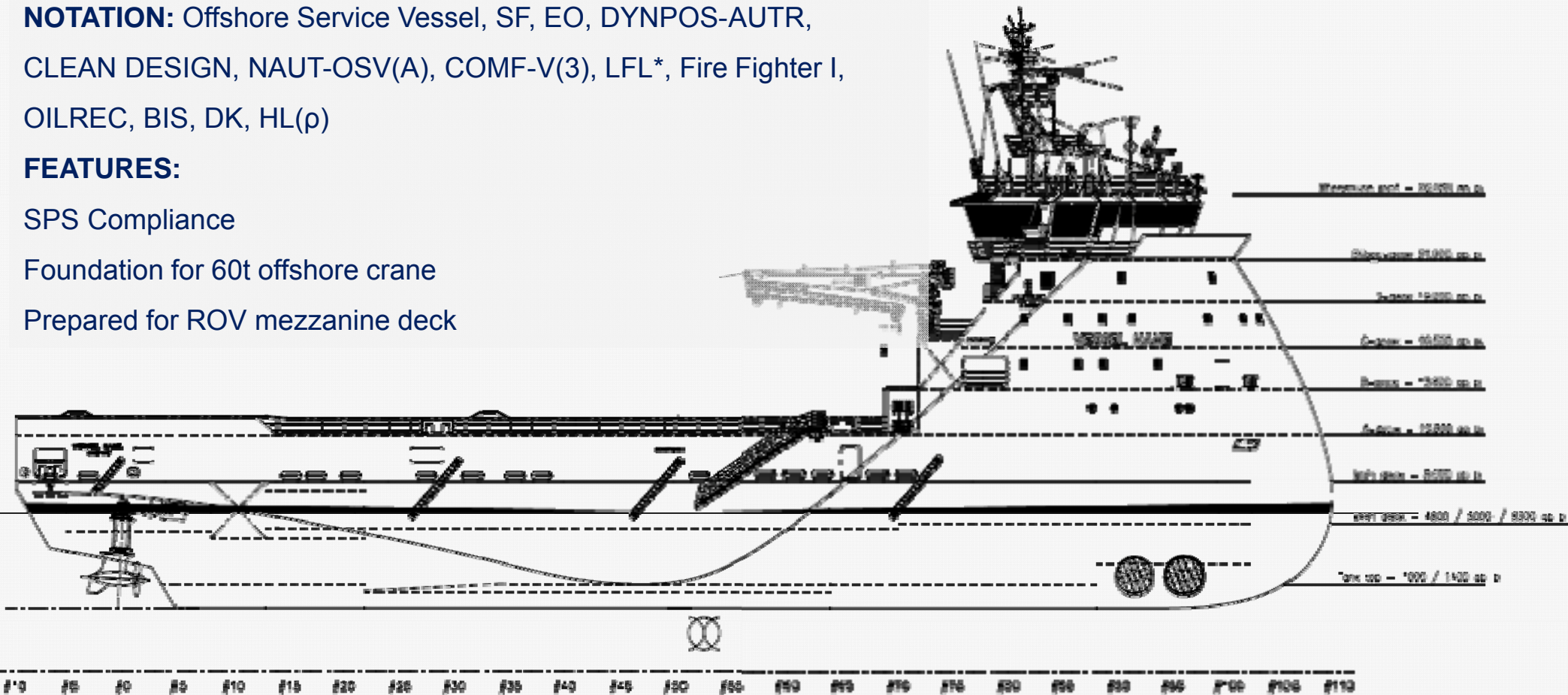
NOTATION: Offshore Service Vessel, SF, EO, DYNPOS-AUTR,
CLEAN DESIGN, NAUT-OSV(A), COMF-V(3), LFL*, Fire Fighter I,
OILREC, BIS, DK, HL(p)

FEATURES:

SPS Compliance

Foundation for 60t offshore crane

Prepared for ROV mezzanine deck



GENERAL- MAIN PARTICULARS



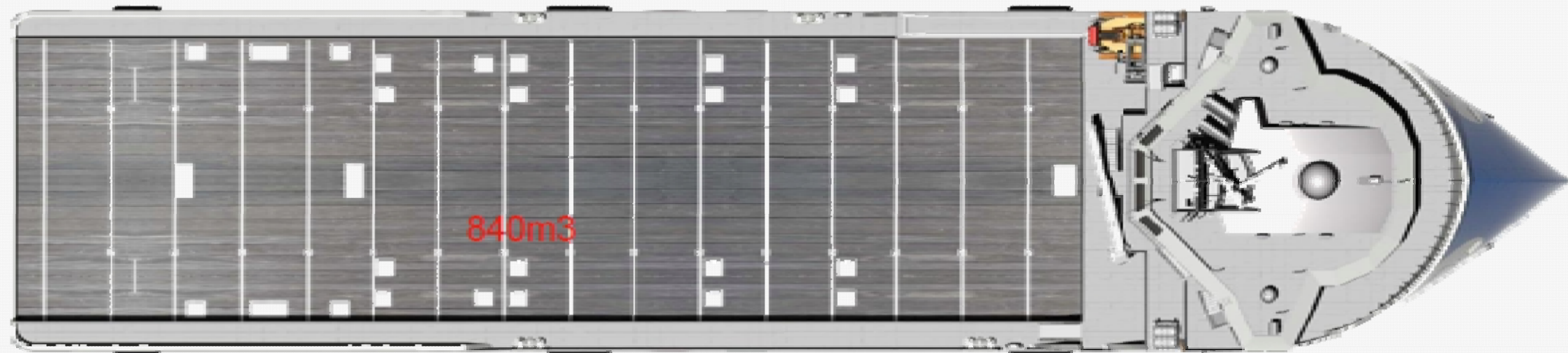
MAIN PARTICULAR & FEATURES

Length O.A.	83.4m
Breadth Moulded	18.0m
Max. Draught	6.7m
Cargo Deck Area	840m ²
Dead Weight	4000T
Complement	30 Persons
Speed	14.5 knot

MIAN PARTICULAR

Fuel Oil (Cargo & Domestic)	1475 m ³ 370m ³ Dedicated	Low Flashpoint Liquid (incl. Methanol)	155m ³
Fresh Water (Cargo & Domestic)	1055m ³ 705m ³ Dedicated	Dry Bulk	255m ³
Drill Water/ Water Ballast	1620m ³	Recovered Oil	660m ³ (Slop+LFL)
Mud	1295m ³ Combined	Lub Oil	40m ³
Brine	1295m ³ Combined	Sewage	55m ³
Slop	505m ³ Combined	Bilge/ Sludge/ Drop Tanks	40m ³
Base Oil	265m ³		

MAIN DECK ARRANGEMENT



- Knuckle boom shipboard crane 3 t at 18 m outreach
- Two tugger winches, pull 10 t
- Two capstans aft, pull 10 t
- Fittings and lashing eyes for Securing of deck cargo/pipe support at main deck and in shelterguard.
- Combined windlass/mooring winch in closed compartment at B-deck forw.
- Two off Roll reduction tanks with damping grid included for minimizing roll. One below Main deck aft and one between B-deck and C-deck.

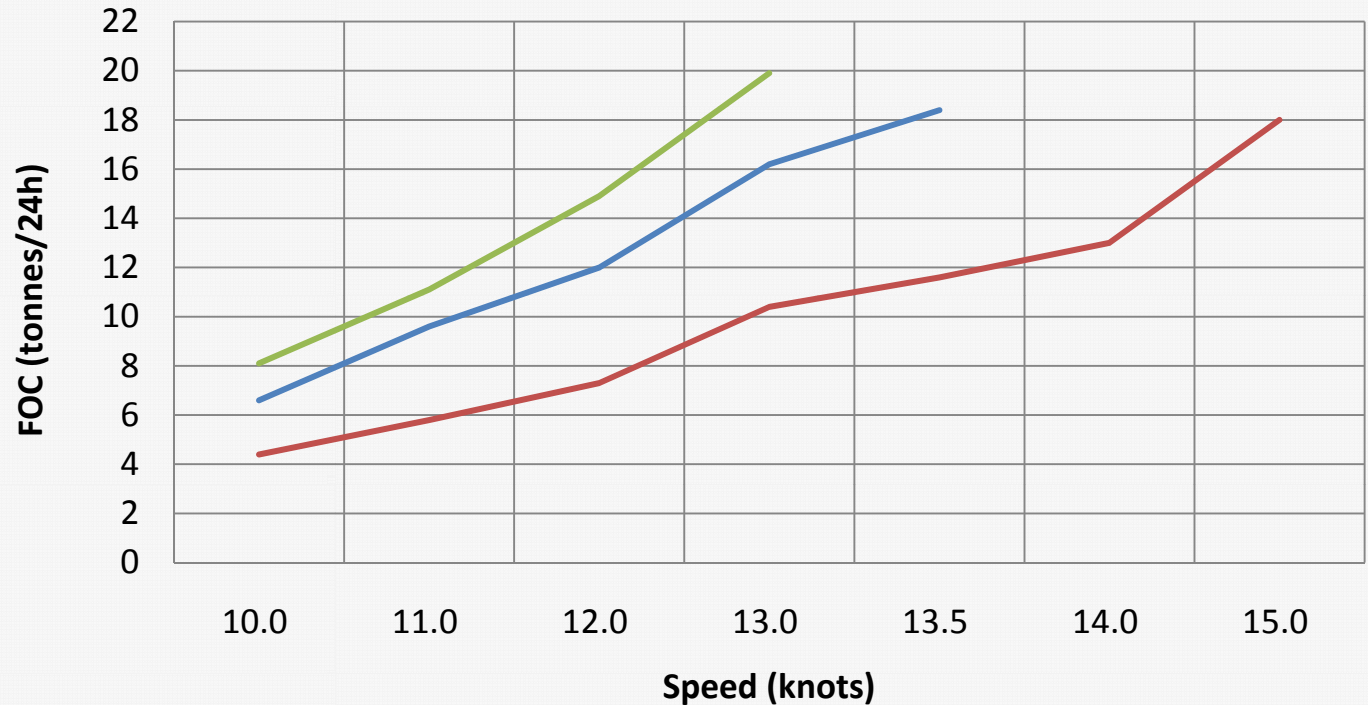
ECONOMIC FOC

PX121 ballast T4.5 (red line)			
Speed (knots)	Engines running	Load (%)	FOC (t/24h)
10.0	1	88	4.4
11.0	1	70	5.8
12.0	1	92	7.3
13.0	2	61	10.4
13.5			11.6
14.0	2	81	13.0
15.0	2+1	83	18.0

PX121 design load T6 (blue line)			
Speed (knots)	Engines running	Load (%)	FOC (t/24h)
10.0	1	82	6.6
11.0	2	55	9.6
12.0	2	73	12.0
13.0	2+1	73	16.2
13.5	2+1	95	18.4

PX121 design load T6.7 (green line)			
Speed (knots)	Engines running	Load (%)	FOC (t/24h)
10.0	2	81	8.1
11.0	2	66	11.1
12.0	2+1	66	14.9
13.0	2+1	71	19.9

POWER SYSTEM



NOTES:

Trial predictions, Hs (m) 0

Engines: 2xCAT 3512C, 1550ekW 1800rpm, 2xCAT C32, 910ekW 1800rpm

Propulsion: RR Azipull85, 2x1600kW

NOx calculations based on available emission data from eng. manufacturer.

The fuel oil consumption is theoretical calculated. SFOC tolerance from eng. Manufacturer +5%

Ship/system load included.

THE X-BOW® BENEFITS

- Increases the operational window
- Lower fuel consumption, reduced emissions
- Improved comfort
- Safer workplace due to extended hull
- Increased volume - larger work deck area



WORKMANSHIP



- High Percentage of Pre-outfitting



- Favorable Working Condition

Delivery Guaranteed

Quality Guaranteed



MAIN EQUIPMENT MAKERS LIST

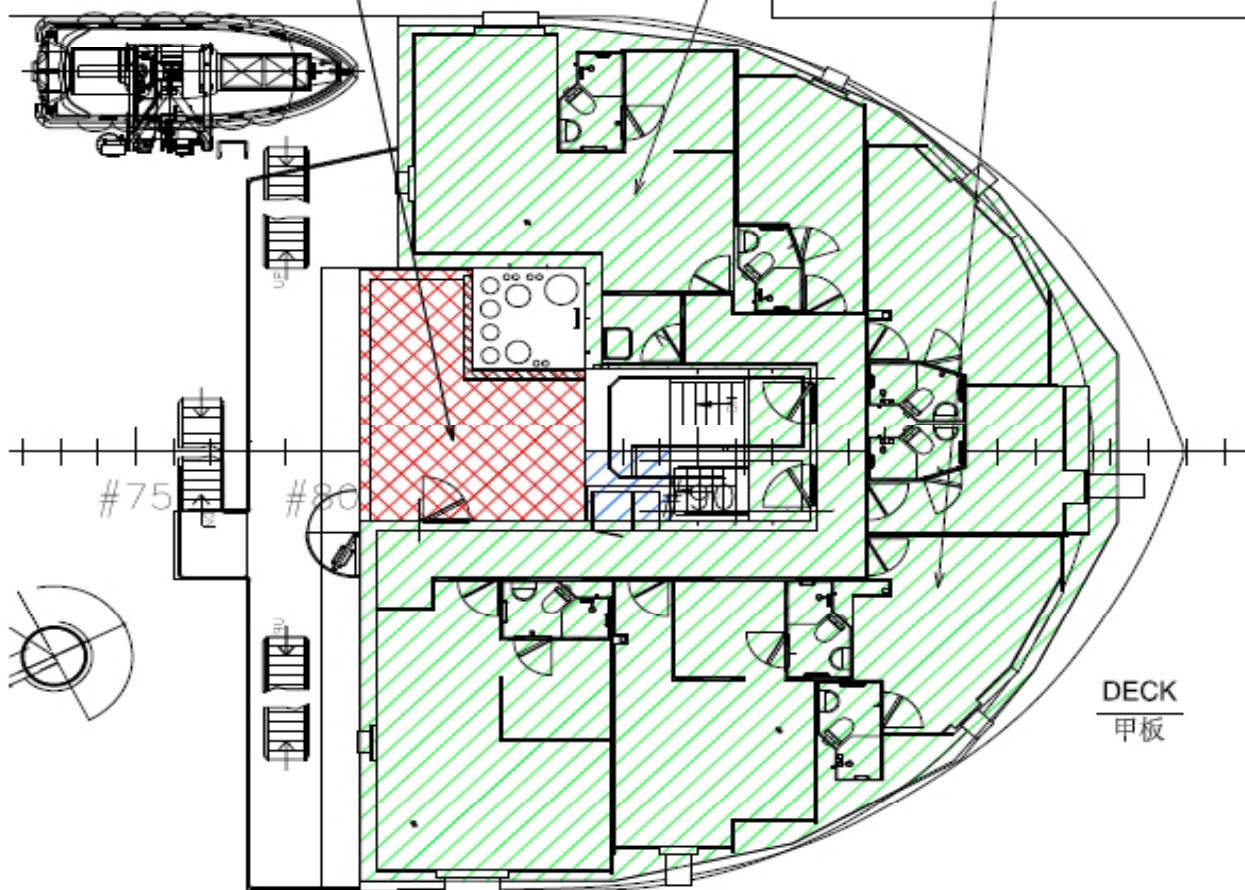
S/N	Equipment	Maker
1	Deck Crane	TTS
2	Loading/discharging pumps	Allweiler
3	Dry Bulk Handling System	Randaberg
4	Dynamic Positioning System	Kongsberg
5	Life Boat	NET-DECK
6	Accommodation Outfitting	Aerotec
7	Air condition system	DMA
8	Main Propulsion	Rolls-Royce
9	Main Generator Sets	CAT
10	Side thrusters & Motor	Rolls-Royce
11	Emergency Generator Set	CAT
12	FI-FI System	FFS

VESSEL COMPLETED



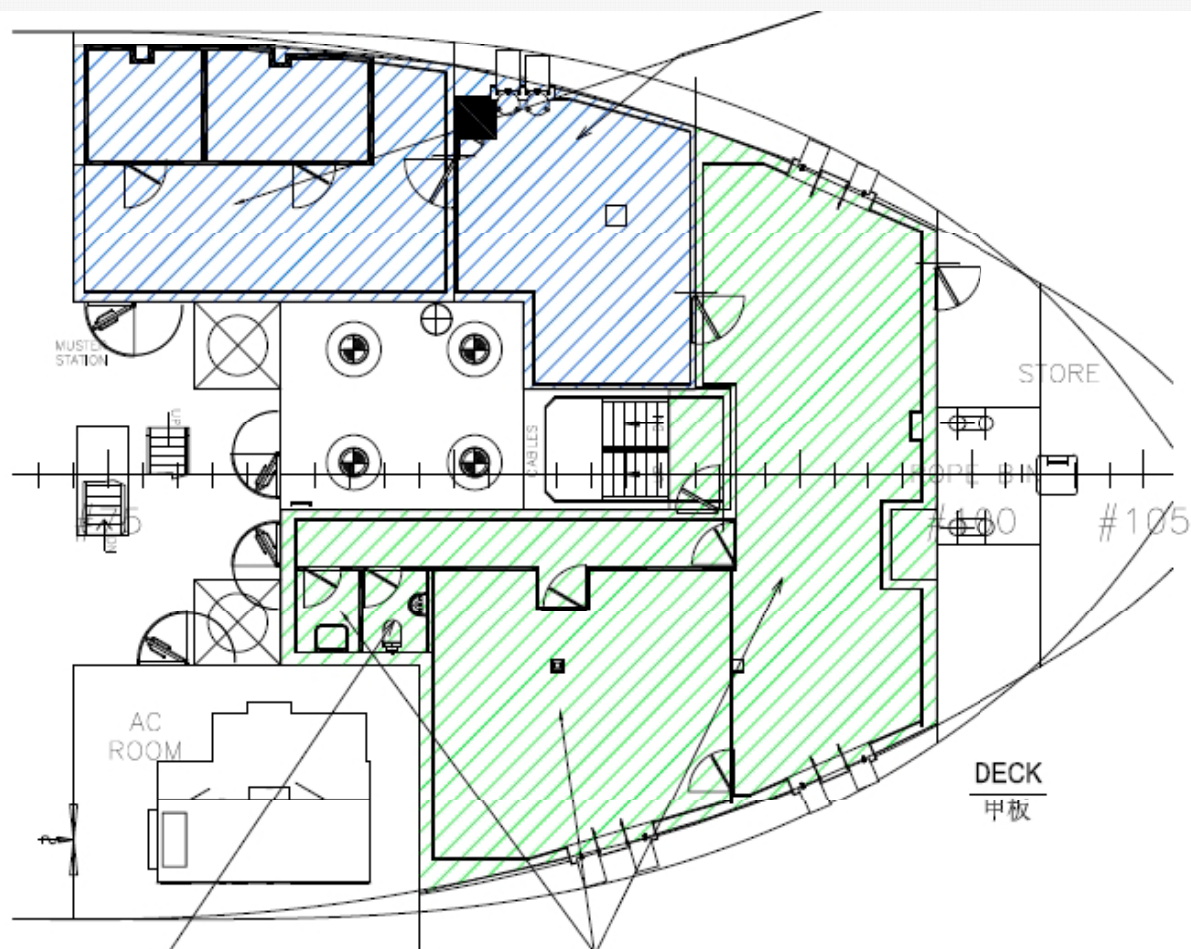
Floating Floor: 仪器间
 浮动地板
 15-20mm Weber 4660 leveling 敷料
 50mm Paroc marine slab (140kg/m3) 岩棉
 3mm galv steel plate 镀锌铁皮
 1-1.5mm visco elastic 阻尼涂料
 2mm galv steel plate 镀锌铁皮

Floating Floor: D甲板所有舱室, 除仪器间
 浮动地板
 15-20mm Weber 4660 leveling 敷料
 30mm Paroc marine slab (140kg/m3) 岩棉
 3mm galv steel plate 镀锌铁皮
 1-1.5mm visco elastic 阻尼涂料
 2mm galv steel plate 镀锌铁皮
 1-1.5mm visco elastic 阻尼涂料
 21mm plywood 木板



D-DECK

VESSEL COMPLETED



Floating Floor 卫生间
 浮动地板
 1.5mm visco elastic 阻尼涂料
 15-20mm Weber 4660 leveling 敷料
 30+30 Paroc marine slab (140kg/m3) 岩棉
 3mm galv steel plate 镀锌铁皮
 1-1.5mm visco elastic 阻尼涂料
 2mm galv steel plate 镀锌铁皮
 1-1.5mm visco elastic 阻尼涂料
 30mm Weber 4660+ tile 敷料+瓷砖

Floating Floor 餐厅 娱乐室 清洁室
 浮动地板
 1.5mm visco elastic 阻尼涂料
 15-20mm Weber 4660 leveling 敷料
 30+30 Paroc marine slab (140kg/m3) 岩棉
 3mm galv steel plate 镀锌铁皮
 1-1.5mm visco elastic 阻尼涂料
 2mm galv steel plate 镀锌铁皮
 1-1.5mm visco elastic 阻尼涂料
 21mm plywood 木板

DECK
甲板

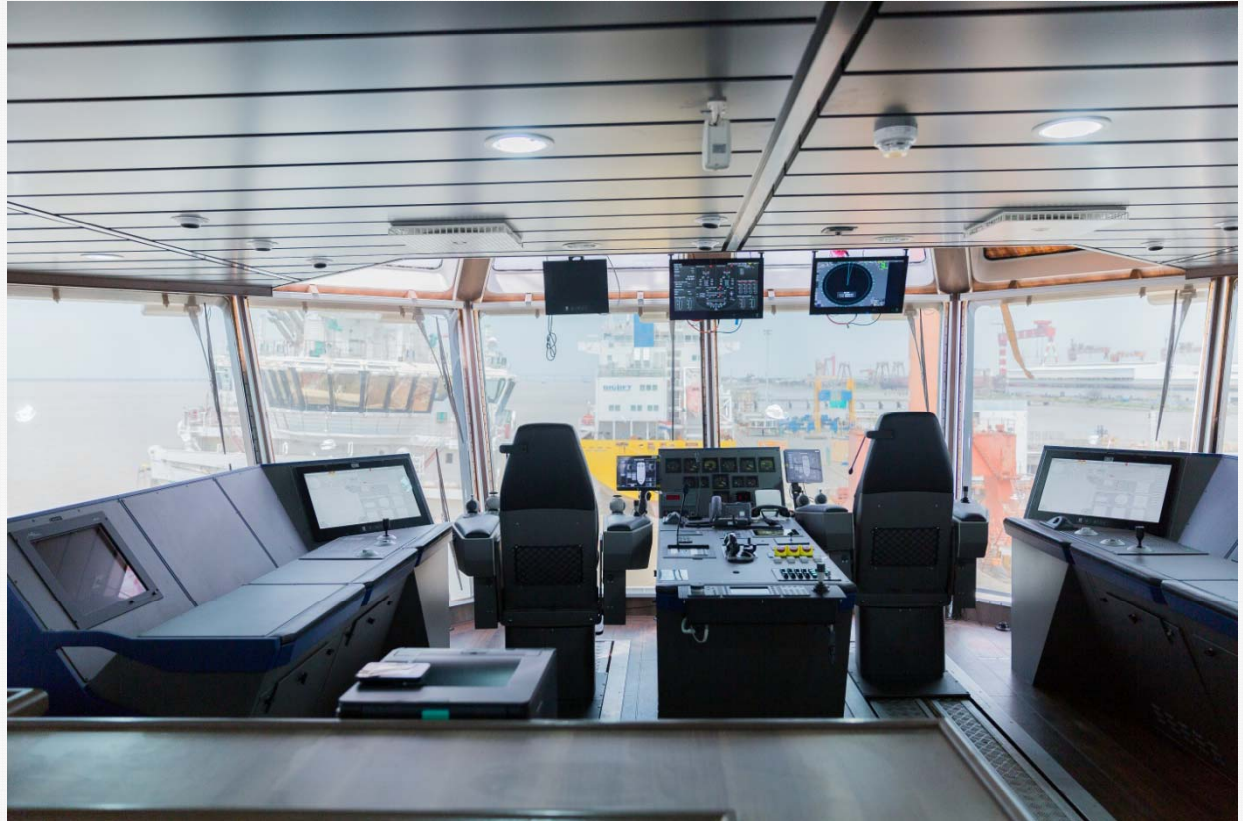
A-DECK
A-甲板



VESSEL COMPLETED



Passageway



Wheelhouse

VESSEL COMPLETED

Engine Room



VESSEL COMPLETED



Cargo
Area

