

HUACHUAN 126

72M DP2 ANCHOR HANDLING & TOWING/ OFFSHORE SUPPORT VESSEL



GENERAL SPECIFICATION

Official No	:	
IMO No	:	9474527
Call Sign	:	
Port of Registry	:	Port Shanghai
Flag	:	Chinese flag
Year Delivered	:	2009
Hull No	:	NC 201
Builder	:	Fujian Southeast Shipyard, China
Designer	:	Wartsila Ship Design (Formerly Conan Wu)
Classification	:	CCS
Notation	:	CCS + FIFI+DPS-2+Offshore support+Anchor Handling/Towing vessel

ACCOMMODATION	
1 Man Cabin x 2	: 2
2 Men Cabin x 3	: 6
4 Men Cabin x 10	: 40
Total Persons On Board	: 48
Hospital Room	: 2 Bed

[FULLY AIR - CONDITIONED]

PROPULSION SYSTEM	
Main Engine	: 2 x 6120 BHP, Diesel engine @ (Rolls-Royce/Bergen) 750 rpm c/w Reduction gearbox
Propeller	: 2 x CPP, 3.9 m Dia @ 4-bladed
Steering Gear	: 2 x Independent Electro. Hyd. Sys
Bow Thruster	: 1 x 10.8 Tons, CPP (735 kW E. Motor)
Stern Thruster	: 1 x 10.8 Tons, CPP (735 kW E. Motor)
Retractable Thruster	: 1 x 13.5 Tons, FPP (1000 BHP Diesel Engine @ 1800 RPM)

PROPULSION PERFORMANCE	
Maximum Speed	: 14.5 Knots (approx.) @ 100% MCR
Bollard Pull	: 152.5 Tons (approx.) @ 100% MCR

PRINCIPAL PARTICULARS

Length Overall	: 72.50 M
Breadth Moulded	: 17.00 M
Depth Moulded	: 7.50 M
Summer Draft	: 6.50 M
Gross Tonnage	: 2921
Net Tonnage	: 876
Deadweight (Summer Draft)	: 2940 Tons (approx.)
Free Deck Space	: 500 m ² (approx.)
Deck Strength	: 5.5 Tons/m ²

ANCHOR MOORING SYSTEM

Anchor Type	: AC14, High Holding Power Type
Anchor Capacity	: 2 x 1920 kg
Anchor Chains	: 2 x 15 Shackles L, 46 mm Dia, U2 Gr

ELECTRIC POWER GENERATION

Main Generators	: 2 x 590 kW@440V/3Ph/60Hz
Emergency Generators	: 1 x 95 kW@440V/3Ph/60Hz
Shaft Alternators	: 2 x 1730 kW@440V/3Ph/60Hz

DECK EQUIPMENT

Anchor Windlass and Mooring Winch	: Electro Hydraulic System, Windlass with 14 Tons Duty Pull @ 12 m/min, Mooring Drum with 18 Tons pull @ 10 m/min and 36 m/min (slack)
Anchor Handling and Towing Winch	: Double drum, Waterfall type @ electro hydraulic system, Drum capacity of 2 x 3500 m x 76 mm or 2 x 2990 m x 82 mm Dia Wire 450 Tons brake holding and 350 Tons pull force@6.1m/min
Storage Drum Capacity	: 2 x 3500m x 76 mm Dia wire
Towing Pin	: 4 units for 300 Tons Bollard Pull
KarmFork	: 2 units for 650 Tons MBL Wire
Stern Roller	: 5.500 M (L) x 2.50 M Dia
Tugger Winch	: 2 x 15 Tons @ Electro. Hyd. Sys
Capstan	: 2 x 10 Tons @ Electro. Hyd. Sys
Deck Crane	: 1 x 5 Tons (SWL) @15m outreach (telescopic boom)
Reefer Point	: 4 x 16A, 415V/3Ph/50Hz 4 x 32A, 230V/1Ph/50Hz

DYNAMIC POSITIONNING SYSTEM

DP System	: 1 set
Maker	: GE Power Conversion

NAVIGATION & COMMUNICATION EQUIPMENT

GPS Navigator	: 1 unit
DGPS	: 2 units
Gyro Compass	: 2 units
Magnetic Compass	: 1 unit
Radar (ARPA)	: 2 units (2 x X-Band)
AIS	: 1 unit
Echo Sounder	: 1 unit
Speed Log	: 1 unit
Anemometer	: 2 units
BNWAS	: 1 set
Auto Pilot	: 1 unit
CCTV	: 1 set
Search Light	: 4 units
GMDSS Radio A3	: 1 complete set
Navtex Receiver	: 1 unit
Fleet Broadband	: 1 set
VSAT	: 1 set
Interior Com System	: 1 set
PA System	: 1 set
Sound Power Phone	: 1 set

SAFETY EQUIPMENT

Liferafts	: 6 x 25 men
Rescue Boat (FRC)	: 1 x 6 men c/w A-Frame Davit
Scrambling Net	: 2 set

Remarks: *Vessel's Life Saving Equipment are in accordance with SOLAS / LSA Code & Flag State requirements.*

FIRE FIGHTING & ANTI POLLUTION EQUIPMENT

FIFI Classification	: FV1
Fire Pumps Capacity	: 2 x 1650 m ³ /hr @ 14.7 bar
Fire Monitor Capacity	: 2 x monitor capacity of 1200 m ³ /h water, 300m ³ /hr foam
Oil Dispersant System	: 2 x 6 m Spray Boom

Remarks: *1 x Fixed Fire-Fighting System (CO2) and 1 x Fixed Local Application System (Water Mist) to Machinery Space of Cat A, Fire Detection and Alarm System and Fire Fighting Equipment are in accordance with SOLAS/ FFS Code & Flag State Requirements.*

DISCHARGE PUMPS CAPACITIES

Fuel Oil (Cargo)	: 2 x 150m ³ /hr @ 90m head
Drill Water (Cargo)	: 1 x 150m ³ /hr @ 90m head
Brine (Cargo)	: 1 x 150m ³ /hr @ 90m head
Liquid Mud (Cargo)	: 2 x 150m ³ /hr @ 90m head

OTHER EQUIPMENT CAPACITIES

Air Compressor for Bulk Sys.	: 2 x 1536 m ³ /h @ 5.6bar
Air Dryer for Bulk Sys.	: 2 x 1800 m ³ /h @ 5.6 to 16 bar
Oily Water Separator	: 1 x 1m ³ /hr
Sewage Treatment Plant	: 1 unit, suitable for 48 men

Fresh Water/ Drill Water/ Water Ballast Tanks (m3)

1 No.1 FW / DW / WB (C)	164.5
2 No.2 FW / DW / WB (P)	76.2
3 No.2 FW / DW / WB (S)	76.2
4 No.3 FW / DW / WB (P)	48.7
5 No.3 FW / DW / WB (S)	48.7
6 No.4 FW / DW / WB (P)	54.7
7 No.4 FW / DW / WB (S)	54.7
8 No.4 FW / DW / WB (C)	26
9 RIG CL / DW / WB (P)	138.5
10 RIG CL / DW / WB (S)	138.5
TOTAL:	826.7

Potable Water Tanks (m3)

1 No.1 PW (P)	99.2
2 No.1 PW (S)	99.2
3 No.2 PW (P)	82.5
4 No.2 PW (S)	82.5
5 No.3 PW (P)	187.4
6 No.3 PW (S)	187.4
TOTAL:	738.2

Fuel Oil Tanks (m3)

1 No.1 FO (P)	134.5
2 No.1 FO (S)	134.5
3 No.1 FO (C)	43.2
4 No.2 FO (P)	136.7
5 No.2 FO (S)	136.7
6 No.2 FO (C)	41.5
7 No.3 FO (P)	83.4
8 No.3 FO (S)	83.4
9 No.3 FO (C)	53.3
10 No.4 FO (P)	80.7
11 No.4 FO (S)	80.7
12 No.4 FO (C)	71.4
13 FO DAY (P)	40.3
14 FO DAY (S)	40.3
TOTAL:	1162.6

Cement Tanks (m3)

1 Cement Tanks	3 x 79.6, 1 x 67.8
TOTAL:	306.6

Mud / Brine Tanks (m3)

1 No.1 Mud / Brine (P)	116.6
2 No.1 Mud / Brine (S)	116.6
3 No.2 Mud / Brine (P)	121.7
4 No.2 Mud / Brine (S)	121.7
5 No.3 Mud / Brine (P)	123.2
6 No.3 Mud / Brine (S)	123.2
TOTAL:	723

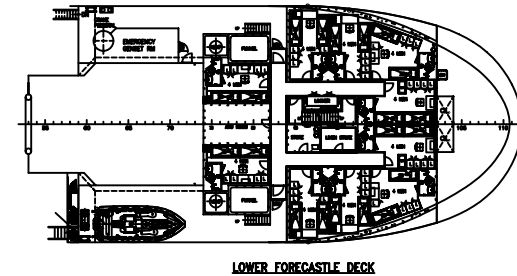
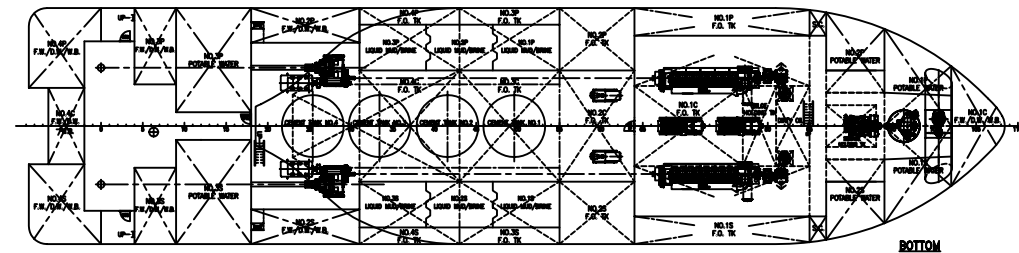
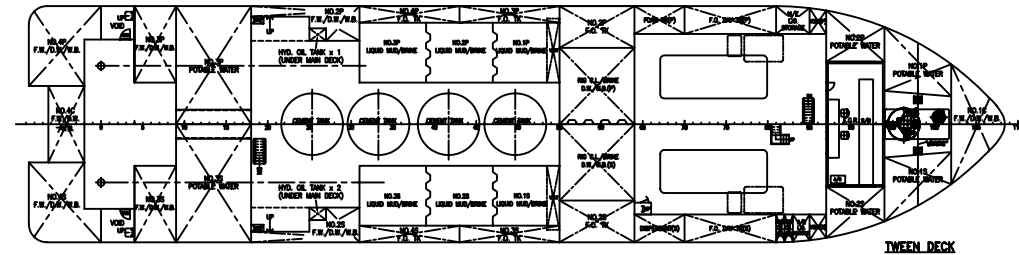
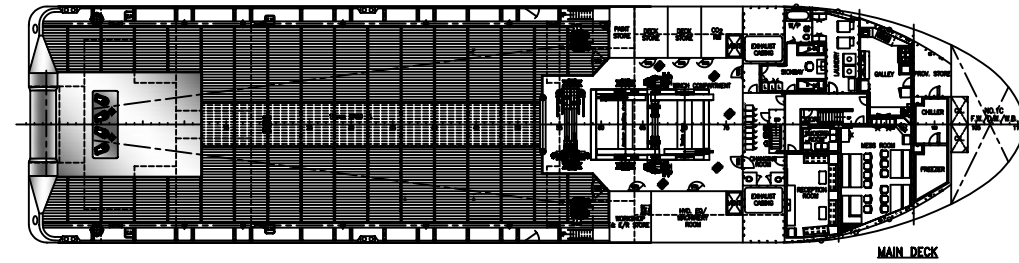
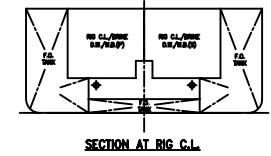
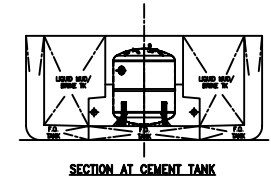
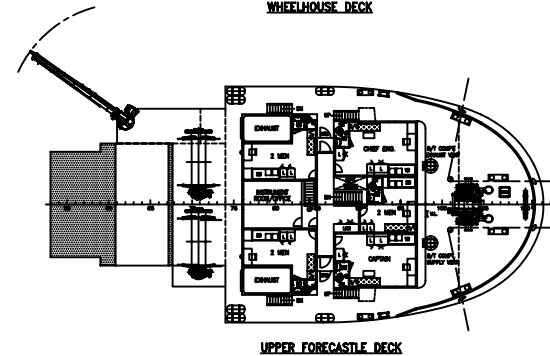
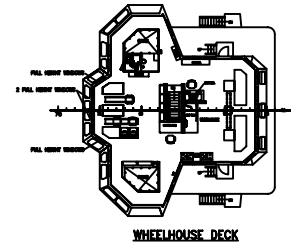
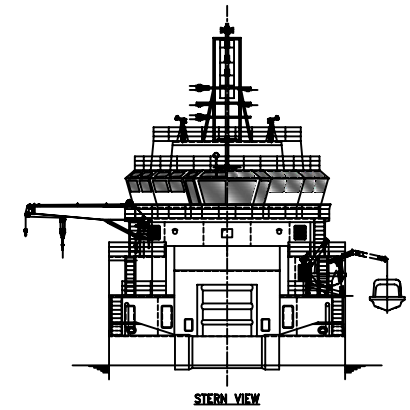
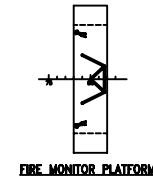
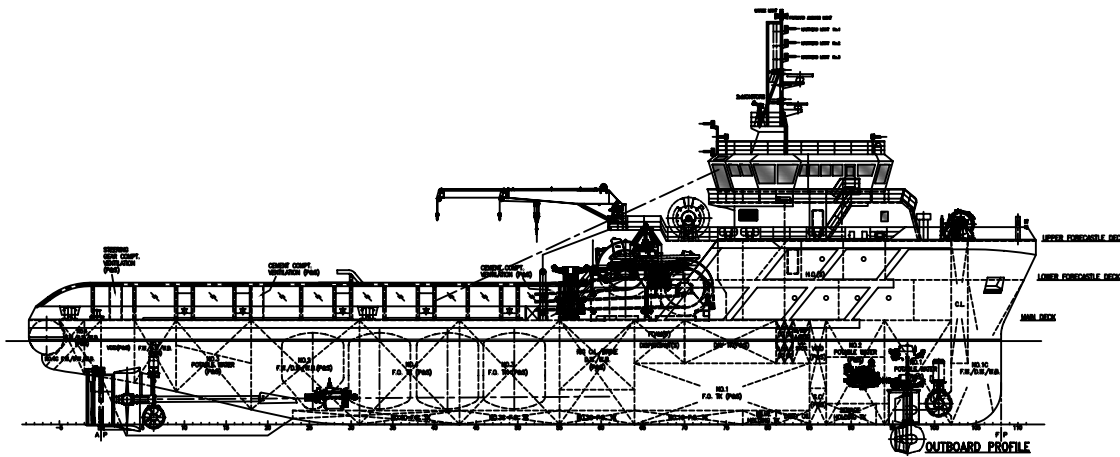
Miscellaneous Tanks (m3)

1 ME LO (P)	14.2
2 AE LO (S)	6.9
3 No.1 HO Upper (S)	1.8
4 No.1 HO Lower (S)	1.8
5 No.2 HO Upper (S)	1.8
6 No.2 HO Lower (S)	1.8
7 Sewage Holding (C)	15.9
8 Dirty Oil (C)	10.9
9 Bilge Holding (C)	13.3
10 Foam (P)	22
11 Dispersant (S)	22
TOTAL:	112.4

[ALL INFORMATION ARE BELIEVED TO BE ACCURATE AT THE TIME OF PRINTING]

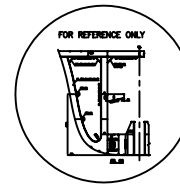
THIS TECHNICAL BRIEF SPECIFICATION IS SUBJECTED TO CHANGE WITHOUT NOTICE

UPDATED : 17-Jun-2016



PRINCIPAL PARTICULARS

LENGTH OA	72.50m
LENGTH BP	64.80m
BEAM MLD.	17.00m
DEPTH MLD	7.50m
DESIGN DRAFT	6.00m
SCANTLING DRAFT	6.60m
COMPLEMENT	48 MEN
CARGO DECK SPACE	500m ² (approx.)



DATE	28.12.08	REVISION	REVISED AS DESIGN PROGRESS	BY	J SW
DATE	04.03.09	REVISION	REVISED AS DESIGN PROGRESS	BY	G SM
DATE		REVISION		BY	
SHIP	72m (12000HP) A.H./ OFFSHORE SUPPORT VESSEL				
TITLE	General Arrangement				
OWNER	RAM ARANDA NAVIGATION SON BHD				
BUILDER	NAM CHEONG DOCKYARDS				
CLASS	ABS				
<p>CONAN WU & ASSOCIATES NAVAL ARCHITECTS SINGAPORE INFO@CWU.COM.SG BUILDING LEVEL 3, 5 INTERNATIONAL BUSINESS PARK, JALAN EAST ST 21, SINGAPORE 02014 TEL: (65) 6342-1138 FAX: (65) 6342-1139 / 6342-0153, E-MAIL: conanwu.com.sg</p> <p>CHINA 480 TONG BILUO LANE-16, MOBILE-2 TIEJI ROAD-2, SHANGHAI 200011 TEL: (86) 21-50707881/50707882 FAX: (86) 21-50707833, E-MAIL: conanwu.com.cn</p>					
DRAWN	CHW/JUA	CHECKED	APPROVED	SCALE	DRAWING NO.
DATE	08-11-08			1:200	C4092/G-1
THIS DRAWING AND THE INFORMATION CONTAINED HEREIN ARE SUPPLIED ON THE UNDERSTANDING THAT THEY ARE THE EXCLUSIVE PROPERTY OF CONAN WU & ASSOCIATES. THEY MUST NOT BE USED OR REPRODUCED IN WHOLE OR IN PART WITHOUT PERMISSION IN WRITING.					